

Anti-DP1/TFDP1 Rabbit mAb

Purified Recombinant Rabbit Monoclonal Antibody

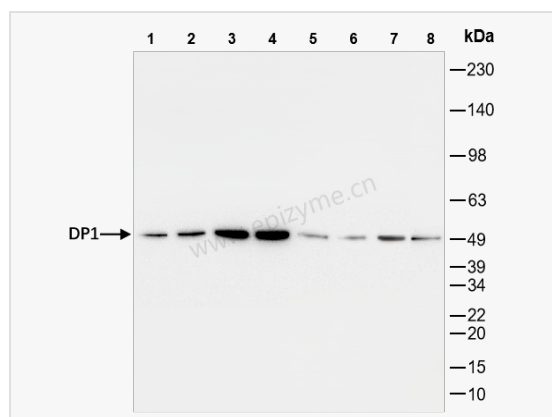
Catalog # R015873

Product Information

Application	WB, ELISA
Reactivity	Human, Mouse, Rat
Dilution	WB 1:1,000~1:2,000
Host	Rabbit
Clonality	Monoclonal
Clone No.	62F62D92
Isotype	IgG
Label	Unconjugated
Immunogen	A synthesized peptide derived from human DP1
Format	Affinity purified monoclonal antibody supplied in PBS with 0.02% sodium azide and 50% glycerol, pH 7.3.
Storage	Shipped on wet ice. Store at -20°C. Stable for 24 months from date of receipt. Aliquoting is unnecessary for -20°C storage.
Precautions	Anti-DP1/TFDP1 Rabbit mAb [62F62D92] is for research use only and not for use in diagnostic or therapeutic procedures.

Protein Information

Synonyms	DP1; TFDP1; Transcription factor Dp-1; DRTF1-polypeptide 1; E2F dimerization partner 1; DRTF1.
Calculated MW	Calculated MW: 45 kDa; Observed MW: 49 kDa
Uniprot ID	Q14186
Gene ID	7027
Background	This gene encodes a member of a family of transcription factors that heterodimerize with E2F proteins to enhance their DNA-binding activity and promote transcription from E2F target genes. The encoded protein functions as part of this complex to control the transcriptional activity of numerous genes involved in cell cycle progression from G1 to S phase. Alternative splicing results in multiple transcript variants. Pseudogenes of this gene are found on chromosomes 1, 15, and X.[provided by RefSeq, Jan 2009]
Cellular Location	Nucleus.Cytoplasm.Shuttles between the cytoplasm and nucleus and translocates into the nuclear compartment upon heterodimerization with E2F1.
Tissue Location	Highest levels in muscle. Also expressed in brain, placenta, liver and kidney. Lower levels in lung and pancreas. Not detected in heart.



Western Blot - Anti-DP1/TFDP1 Rabbit mAb [62F62D92]

All lanes: R015873 at 1:1,000 dilution

Lane 1: HeLa (Human cervix adenocarcinoma epithelial cell) whole cell lysates

Lane 2: HepG2 (Human hepatocarcinoma epithelial cell) whole cell lysates

Lane 3: HCT116 (Human colorectal carcinoma epithelial cell) whole cell lysates

Lane 4: 293T (Human embryonic kidney cell) whole cell lysates

Lane 5: K562 (Human chronic myeloid leukemia cell) whole cell lysates

Lane 6: SH-SY5Y (Human neuroblastoma epithelial cell) whole cell lysates

Lane 7: C2C12 (Mouse myoblasts epithelial cell) whole cell lysates

Lane 8: PC-12 (Rat adrenal pheochromocytoma epithelial cell) whole cell lysates

Lysates/proteins at 10 µg per lane.

Secondary antibody: Goat Anti-Rabbit IgG (H+L), HRP Conjugated (Cat. No. LF102) at

1:5,000 dilution

Predicted band size: 45 kDa

Observed band size: 49 kDa

Developed using the ECL technique (Cat. No. SQ201).