

Anti-MYL12A Rabbit pAb

Purified Rabbit Polyclonal Antibody

Catalog # P108736

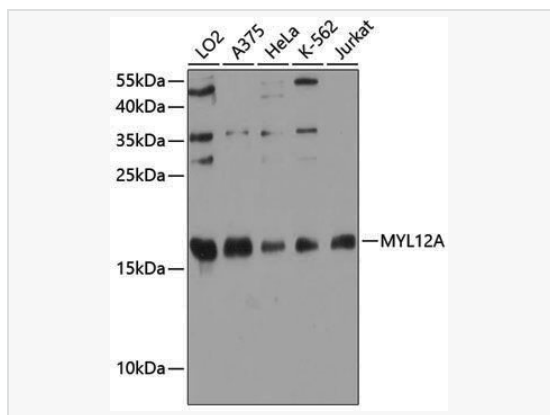
Product Information

Application	WB, ELISA
Reactivity	Human
Dilution	WB 1:500~1:2,000
Host	Rabbit
Clonality	Polyclonal
Isotype	IgG
Label	Unconjugated
Immunogen	Recombinant fusion protein containing a sequence corresponding to amino acids 92-171 of human MYL12A (NP_006462.1).
Format	Affinity purified polyclonal antibody supplied in PBS with 0.02% sodium azide and 50% glycerol, pH 7.3.
Storage	Shipped on wet ice. Store at -20°C. Stable for 24 months from date of receipt. Aliquoting is unnecessary for -20°C storage.
Precautions	Anti-MYL12A Rabbit pAb is for research use only and not for use in diagnostic or therapeutic procedures.

Protein Information

Synonyms	MLCB; MRCL3; MRCL3; MYL2B; MLC-2B; HEL-S-24; MYL12A.
Calculated MW	Calculated MW: 20 kDa; Observed MW: 18 kDa
Uniprot ID	P19105
Gene ID	10627
Background	This gene encodes a nonsarcomeric myosin regulatory light chain. This protein is activated by phosphorylation and regulates smooth muscle and non-muscle cell contraction. This protein may also be involved in DNA damage repair by sequestering the transcriptional regulator apoptosis-antagonizing transcription factor (AATF)/Che-1 which functions as a repressor of p53-driven apoptosis. Alternate splicing results in multiple transcript variants. A pseudogene of this gene is found on chromosome 8.

Validation Images



Western blot analysis of various lysates using MYL12A Rabbit pAb (P108736) at 1:3,000 dilution.

Secondary antibody: HRP-conjugated Goat anti-Rabbit IgG (H+L) (LF102) at 1:10,000 dilution.

Lysates/proteins: 25µg per lane.

Blocking buffer: 3% nonfat dry milk in TBST.

Detection: ECL Enhanced Kit (SQ201).

Exposure time: 90s.