

# Anti-NDUFA2 Rabbit pAb

Purified Rabbit Polyclonal Antibody

Catalog # P107578

## Product Information

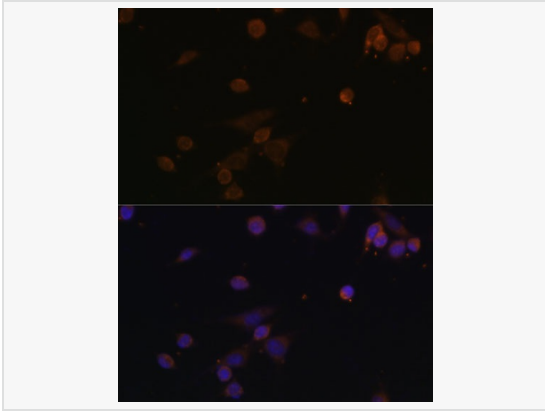
Application	WB, IF (Cell)/ICC, ELISA
Reactivity	Human, Mouse, Rat
Dilution	WB 1:500~1:2,000; IF 1:50~1:200
Host	Rabbit
Clonality	Polyclonal
Isotype	IgG
Label	Unconjugated
Immunogen	Recombinant fusion protein containing a sequence corresponding to amino acids 1-95 of human NDUFA2 (NP_002479.1).
Format	Affinity purified polyclonal antibody supplied in PBS with 0.02% sodium azide and 50% glycerol, pH 7.3.
Storage	Shipped on wet ice. Store at -20°C. Stable for 24 months from date of receipt. Aliquoting is unnecessary for -20°C storage.
Precautions	Anti-NDUFA2 Rabbit pAb is for research use only and not for use in diagnostic or therapeutic procedures.

## Protein Information

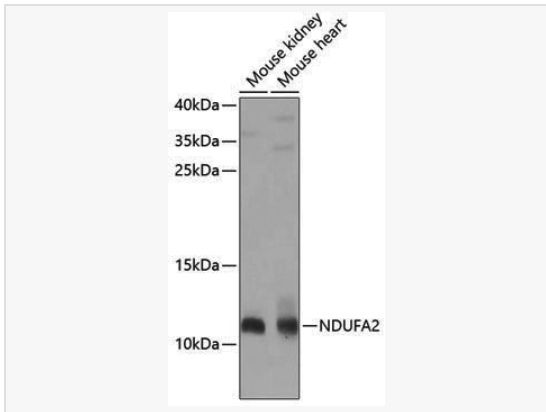
Synonyms	B8; CD14; CIB8; MC1DN13; NDUFA2.
Calculated MW	Calculated MW: 11 kDa; Observed MW: 11 kDa
Uniprot ID	O43678
Gene ID	4695
Background	The encoded protein is a subunit of the hydrophobic protein fraction of the NADH:ubiquinone oxidoreductase (complex I), the first enzyme complex in the electron transport chain located in the inner mitochondrial membrane, and may be involved in regulating complex I activity or its assembly via assistance in redox processes. Mutations in this gene are associated with Leigh syndrome, an early-onset progressive neurodegenerative disorder. Alternative splicing results in multiple transcript variants.

## Validation Images

---



Immunofluorescence analysis of NIH/3T3 cells using NDUFA2 Rabbit pAb (P107578) at dilution of 1:100. Secondary antibody: Cy3-conjugated Goat anti-Rabbit IgG (H+L) at 1:500 dilution. Blue: DAPI for nuclear staining.



Western blot analysis of various lysates using NDUFA2 Rabbit pAb (P107578) at 1:1,000 dilution. Secondary antibody: HRP-conjugated Goat anti-Rabbit IgG (H+L) (LF102) at 1:10,000 dilution. Lysates/proteins: 25 $\mu$ g per lane. Blocking buffer: 3% nonfat dry milk in TBST. Detection: ECL Kit (SQ201). Exposure time: 30s.