

Anti-SAR1B Rabbit pAb

Purified Rabbit Polyclonal Antibody

Catalog # P105935

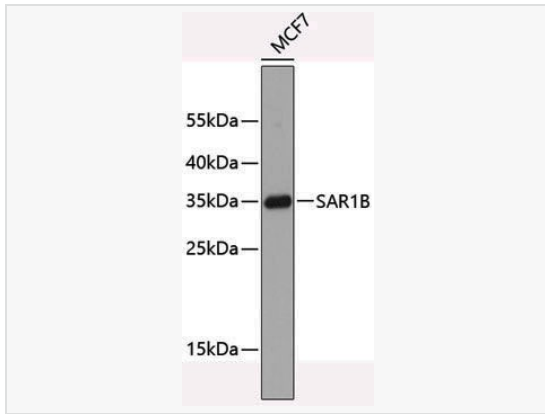
Product Information

Application	WB, ELISA
Reactivity	Human
Dilution	WB 1:500~1:2,000
Host	Rabbit
Clonality	Polyclonal
Isotype	IgG
Label	Unconjugated
Immunogen	Recombinant fusion protein containing a sequence corresponding to amino acids 1-198 of human SAR1B (NP_057187.1).
Format	Affinity purified polyclonal antibody supplied in PBS with 0.02% sodium azide and 50% glycerol, pH 7.3.
Storage	Shipped on wet ice. Store at -20°C. Stable for 24 months from date of receipt. Aliquoting is unnecessary for -20°C storage.
Precautions	Anti-SAR1B Rabbit pAb is for research use only and not for use in diagnostic or therapeutic procedures.

Protein Information

Synonyms	ANDD; CMRD; GTBPPB; SARA2; SAR1B.
Calculated MW	Calculated MW: 22 kDa; Observed MW: Refer to figures
Uniprot ID	Q9Y6B6
Gene ID	51128
Background	The protein encoded by this gene is a small GTPase that acts as a homodimer. The encoded protein is activated by the guanine nucleotide exchange factor PREB and is involved in protein transport from the endoplasmic reticulum to the Golgi. This protein is part of the COPII coat complex. Defects in this gene are a cause of chylomicron retention disease (CMRD), also known as Anderson disease (ANDD). Two transcript variants encoding the same protein have been found for this gene.

Validation Images



Western blot analysis of lysates from MCF-7 cells, using SAR1B Rabbit pAb (P105935).

Secondary antibody: HRP-conjugated Goat anti-Rabbit IgG (H+L) (LF102) at 1:10,000 dilution.

Lysates/proteins: 25 μ g per lane.

Blocking buffer: 3% nonfat dry milk in TBST.