

Anti-LARP1 Rabbit pAb

Purified Rabbit Polyclonal Antibody

Catalog # P105890

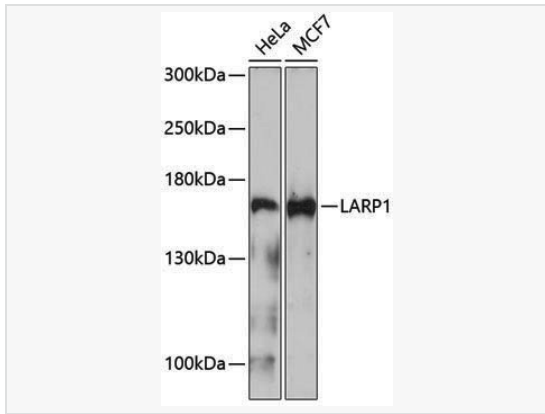
Product Information

Application	WB, ELISA
Reactivity	Human
Dilution	WB 1:500~1:2,000
Host	Rabbit
Clonality	Polyclonal
Isotype	IgG
Label	Unconjugated
Immunogen	Recombinant fusion protein containing a sequence corresponding to amino acids 106-205 of human LARP1 (Q6PKG0).
Format	Affinity purified polyclonal antibody supplied in PBS with 0.02% sodium azide and 50% glycerol, pH 7.3.
Storage	Shipped on wet ice. Store at -20°C. Stable for 24 months from date of receipt. Aliquoting is unnecessary for -20°C storage.
Precautions	Anti-LARP1 Rabbit pAb is for research use only and not for use in diagnostic or therapeutic procedures.

Protein Information

Synonyms	LARP; Lar1; Lhp1; LARP1.
Calculated MW	Calculated MW: 124 kDa; Observed MW: 163 kDa
Uniprot ID	Q6PKG0
Gene ID	23367
Background	Enables eukaryotic initiation factor 4E binding activity; nucleic acid binding activity; and ribosomal small subunit binding activity. Involved in several processes, including TORC1 signaling; cellular response to rapamycin; and posttranscriptional regulation of gene expression. Located in cytoplasmic stress granule. Colocalizes with TORC1 complex and polysomal ribosome.

Validation Images



Western blot analysis of various lysates using LARP1 Rabbit pAb (P105890) at 1:1,000 dilution.

Secondary antibody: HRP-conjugated Goat anti-Rabbit IgG (H+L) (LF102) at 1:10,000 dilution.

Lysates/proteins: 25 μ g per lane.

Blocking buffer: 3% nonfat dry milk in TBST.

Detection: ECL Enhanced Kit (SQ201).

Exposure time: 90s.