

Anti-LHB/CGB1 Rabbit pAb

Purified Rabbit Polyclonal Antibody

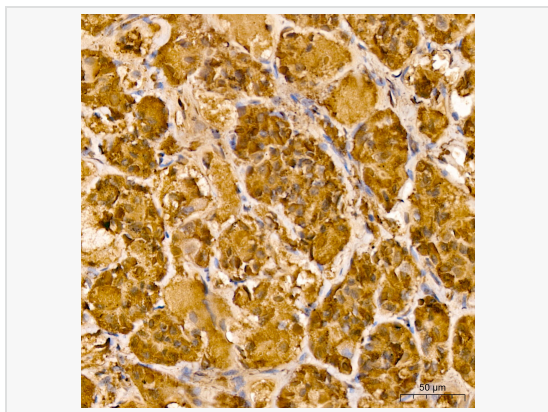
Catalog # P105660

Product Information

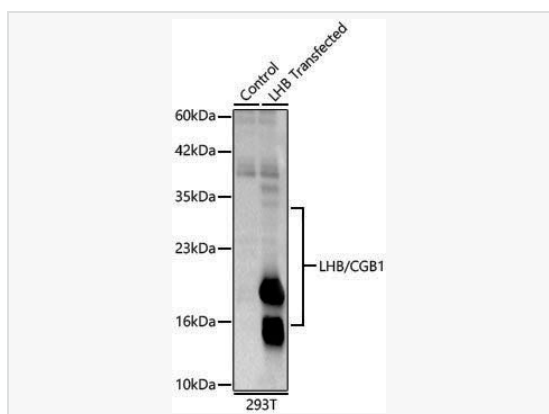
Application	WB, IHC-P/IF (Tissue-P), ELISA
Reactivity	Human
Dilution	WB 1:500~1:1,000; IHC-P 1:50~1:200
Host	Rabbit
Clonality	Polyclonal
Isotype	IgG
Label	Unconjugated
Immunogen	Recombinant Protein corresponding to a sequence within amino acids 21-141 of human LHB(NP_000885.1).
Format	Affinity purified polyclonal antibody supplied in PBS with 0.02% sodium azide and 50% glycerol, pH 7.3.
Storage	Shipped on wet ice. Store at -20°C. Stable for 24 months from date of receipt. Aliquoting is unnecessary for -20°C storage.
Precautions	Anti-LHB/CGB1 Rabbit pAb is for research use only and not for use in diagnostic or therapeutic procedures.

Protein Information

Synonyms	LHB; CGB4; HH23; LSH-B; LSH-beta; lutropin subunit beta; Lutropin subunit beta.
Calculated MW	Calculated MW: 15 kDa; Observed MW: 15-30 kDa
Uniprot ID	P01229
Gene ID	3972
Background	This gene is a member of the glycoprotein hormone beta chain family and encodes the beta subunit of luteinizing hormone (LH). Glycoprotein hormones are heterodimers consisting of a common alpha subunit and an unique beta subunit which confers biological specificity. LH is expressed in the pituitary gland and promotes spermatogenesis and ovulation by stimulating the testes and ovaries to synthesize steroids. The genes for the beta chains of chorionic gonadotropin and for luteinizing hormone are contiguous on chromosome 19q13.3. Mutations in this gene are associated with hypogonadism which is characterized by infertility and pseudohermaphroditism.



Immunohistochemistry analysis of paraffin-embedded Human pituitary gland tissue using LHB/CGB1 Rabbit pAb (P105660) at a dilution of 1:100 (40× lens). High pressure antigen retrieval was performed with 0.01 M Tris-EDTA buffer (pH 9.0) prior to IHC staining.



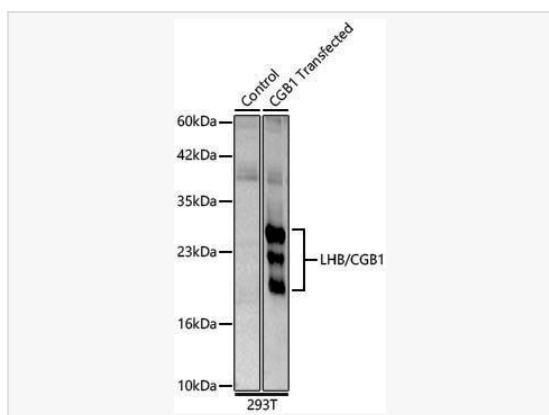
Western blot analysis of lysates from wild type (WT) and 293T cells transfected with LHB/CGB1 using Lutropin subunit beta Rabbit pAb (P105660) at 1:800 dilution. Secondary antibody: HRP-conjugated Goat anti-Rabbit IgG (H+L) (LF102) at 1:10,000 dilution.

Lysates/proteins: 25 μg per lane.

Blocking buffer: 3% nonfat dry milk in TBST.

Detection: ECL Kit (SQ201).

Exposure time: 45s.



Western blot analysis of lysates from wild type (WT) and 293T cells transfected with LHB/CGB1 using Lutropin subunit beta Rabbit pAb (P105660) at 1:800 dilution. Secondary antibody: HRP-conjugated Goat anti-Rabbit IgG (H+L) (LF102) at 1:10,000 dilution.

Lysates/proteins: 25 μg per lane.

Blocking buffer: 3% nonfat dry milk in TBST.

Detection: ECL Kit (SQ201).

Exposure time: 45s.