

Anti-HCAR3 Rabbit pAb

Purified Rabbit Polyclonal Antibody

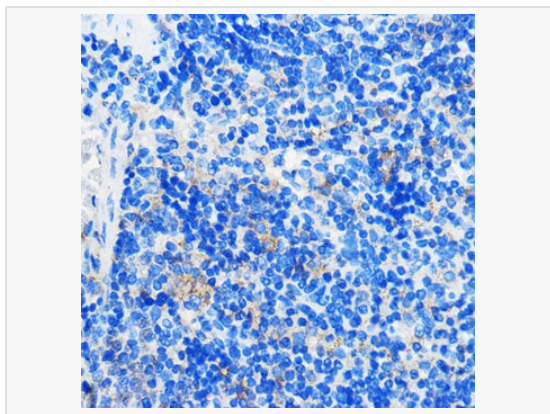
Catalog # P103982

Product Information

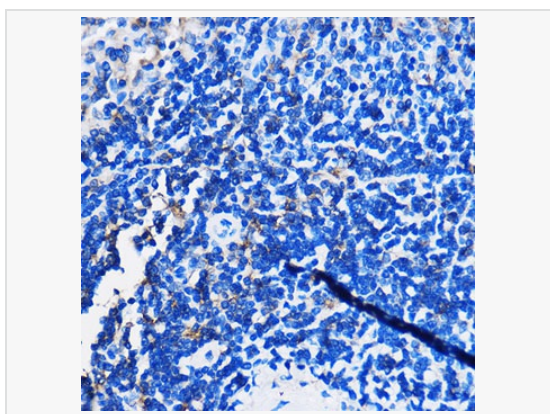
Application	WB, IHC-P/IF (Tissue-P), ELISA
Reactivity	Human, Mouse, Rat
Dilution	WB 1:500~1:2,000; IHC-P 1:50~1:200
Host	Rabbit
Clonality	Polyclonal
Isotype	IgG
Label	Unconjugated
Immunogen	A synthetic peptide corresponding to a sequence within amino acids 300-392 of human HCAR3 (NP_006009.2).
Format	Affinity purified polyclonal antibody supplied in PBS with 0.02% sodium azide and 50% glycerol, pH 7.3.
Storage	Shipped on wet ice. Store at -20°C. Stable for 24 months from date of receipt. Aliquoting is unnecessary for -20°C storage.
Precautions	Anti-HCAR3 Rabbit pAb is for research use only and not for use in diagnostic or therapeutic procedures.

Protein Information

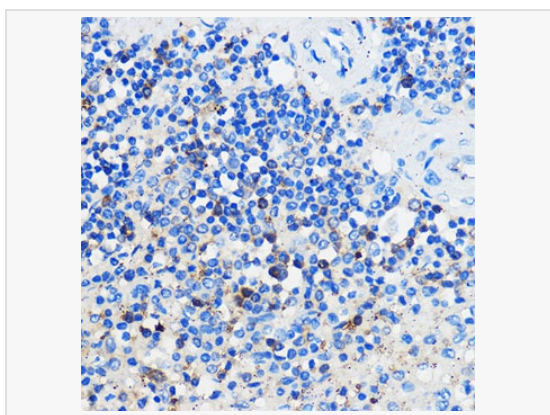
Synonyms	HCA3; HM74; PUMAG; Puma-g; GPR109B; HCAR3.
Calculated MW	Calculated MW: 44 kDa; Observed MW: 44 kDa
Uniprot ID	P49019
Gene ID	8843
Background	Predicted to enable GTP binding activity and purinergic nucleotide receptor activity. Predicted to be involved in G protein-coupled receptor signaling pathway. Located in cell junction.



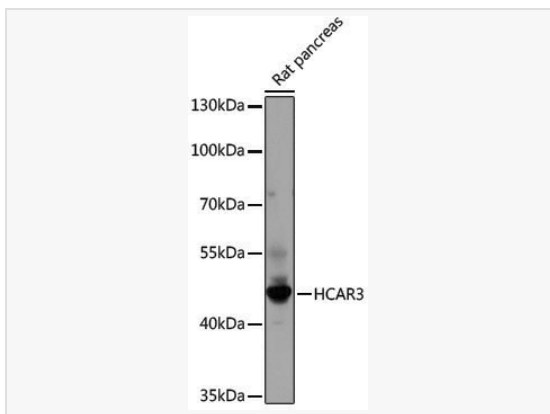
Immunohistochemistry analysis of paraffin-embedded Mouse spleen using HCAR3 Rabbit pAb (P103982) at dilution of 1:100 (40× lens). Microwave antigen retrieval performed with 0.01M PBS Buffer (pH 7.2) prior to IHC staining.



Immunohistochemistry analysis of paraffin-embedded Rat spleen using HCAR3 Rabbit pAb (P103982) at dilution of 1:100 (40× lens). Microwave antigen retrieval performed with 0.01M PBS Buffer (pH 7.2) prior to IHC staining.



Immunohistochemistry analysis of paraffin-embedded Human spleen using HCAR3 Rabbit pAb (P103982) at dilution of 1:100 (40× lens). Microwave antigen retrieval performed with 0.01M PBS Buffer (pH 7.2) prior to IHC staining.



Western blot analysis of lysates from Rat pancreas, using HCAR3 Rabbit pAb (P103982) at 1:1,000 dilution.
Secondary antibody: HRP-conjugated Goat anti-Rabbit IgG (H+L) (LF102) at 1:10,000 dilution.
Lysates/proteins: 25µg per lane.
Blocking buffer: 3% nonfat dry milk in TBST.
Detection: ECL Kit.
Exposure time: 120s.