

Anti-ABI1 Rabbit pAb

Purified Rabbit Polyclonal Antibody

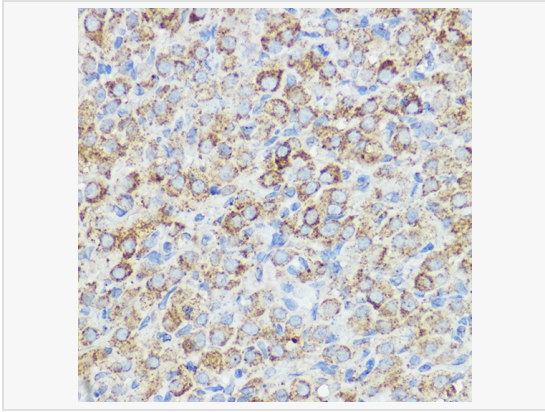
Catalog # P103074

Product Information

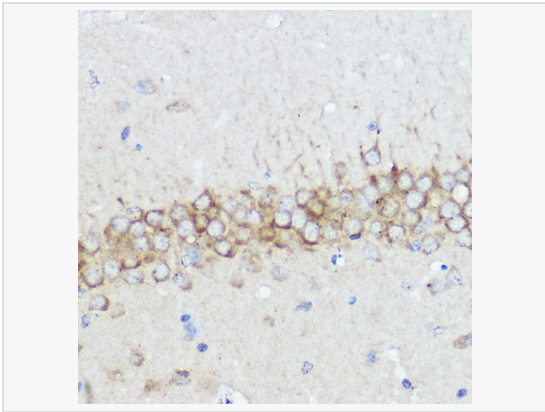
Application	WB, IHC-P/IF (Tissue-P), ELISA
Reactivity	Human, Mouse, Rat
Dilution	WB 1:500~1:1,000; IHC-P 1:50~1:200
Host	Rabbit
Clonality	Polyclonal
Isotype	IgG
Label	Unconjugated
Immunogen	Recombinant fusion protein containing a sequence corresponding to amino acids 180-230 of human ABI1 (NP_001012770).
Format	Affinity purified polyclonal antibody supplied in PBS with 0.02% sodium azide and 50% glycerol, pH 7.3.
Storage	Shipped on wet ice. Store at -20°C. Stable for 24 months from date of receipt. Aliquoting is unnecessary for -20°C storage.
Precautions	Anti-ABI1 Rabbit pAb is for research use only and not for use in diagnostic or therapeutic procedures.

Protein Information

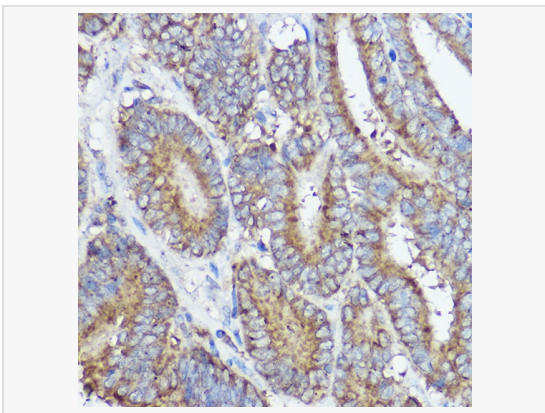
Synonyms	E3B1; ABI-1; ABLBP4; NAP1BP; SSH3BP; SSH3BP1; ABI1.
Calculated MW	Calculated MW: 55 kDa; Observed MW: 55-65 kDa
Uniprot ID	Q8IZP0
Gene ID	10006
Background	This gene encodes a member of the Abelson-interactor family of adaptor proteins. These proteins facilitate signal transduction as components of several multiprotein complexes, and regulate actin polymerization and cytoskeletal remodeling through interactions with Abelson tyrosine kinases. The encoded protein plays a role in macropinocytosis as a component of the WAVE2 complex, and also forms a complex with EPS8 and SOS1 that mediates signal transduction from Ras to Rac. This gene may play a role in the progression of several malignancies including melanoma, colon cancer and breast cancer, and a t(10;11) chromosomal translocation involving this gene and the MLL gene has been associated with acute myeloid leukemia. Alternatively spliced transcript variants encoding multiple isoforms have been observed for this gene, and a pseudogene of this gene is located on the long arm of chromosome 14.



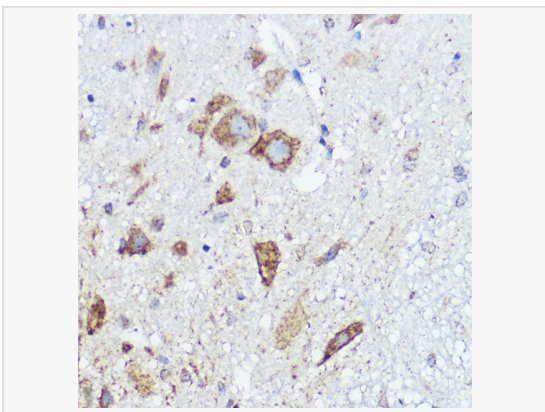
Immunohistochemistry analysis of paraffin-embedded Rat ovary using ABI1 Rabbit pAb (P103074) at dilution of 1:50 (40× lens). High pressure antigen retrieval performed with 0.01M Citrate Bufferr (pH 6.0) prior to IHC staining.



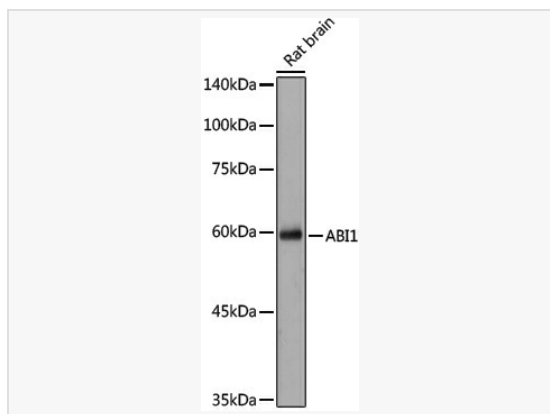
Immunohistochemistry analysis of paraffin-embedded Rat brain using ABI1 Rabbit pAb (P103074) at dilution of 1:50 (40× lens). High pressure antigen retrieval performed with 0.01M Citrate Bufferr (pH 6.0) prior to IHC staining.



Immunohistochemistry analysis of paraffin-embedded Human colon carcinoma using ABI1 Rabbit pAb (P103074) at dilution of 1:50 (40× lens). High pressure antigen retrieval performed with 0.01M Citrate Bufferr (pH 6.0) prior to IHC staining.



Immunohistochemistry analysis of paraffin-embedded Mouse spinal cord using ABI1 Rabbit pAb (P103074) at dilution of 1:50 (40× lens). High pressure antigen retrieval performed with 0.01M Citrate Bufferr (pH 6.0) prior to IHC staining.



Western blot analysis of lysates from Rat brain , using ABI1 Rabbit pAb (P103074) at 1:1,000 dilution.

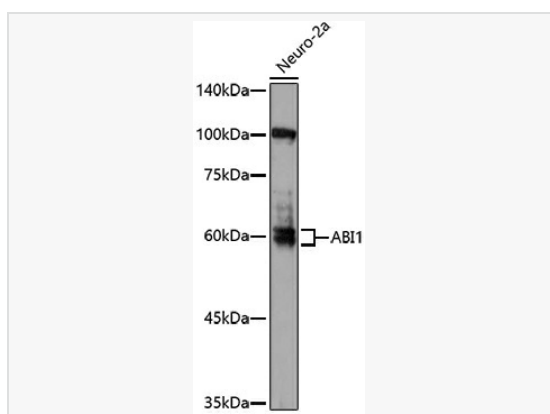
Secondary antibody: HRP-conjugated Goat anti-Rabbit IgG (H+L) (LF102) at 1:10,000 dilution.

Lysates/proteins: 25 μ g per lane.

Blocking buffer: 3% nonfat dry milk in TBST.

Detection: ECL Kit.

Exposure time: 30s.



Western blot analysis of lysates from Neuro-2a cells, using ABI1 Rabbit pAb (P103074) at 1:1,000 dilution.

Secondary antibody: HRP-conjugated Goat anti-Rabbit IgG (H+L) (LF102) at 1:10,000 dilution.

Lysates/proteins: 25 μ g per lane.

Blocking buffer: 3% nonfat dry milk in TBST.

Detection: ECL Enhanced Kit.

Exposure time: 180s.