

## Anti-BATF Rabbit pAb

Purified Rabbit Polyclonal Antibody

Catalog # P102265

### Product Information

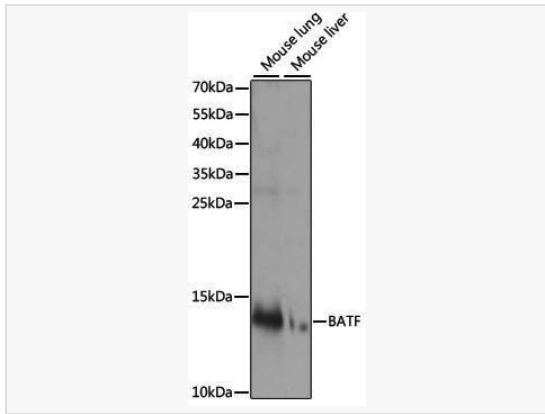
Application	WB, ELISA
Reactivity	Mouse
Dilution	WB 1:500~1:2,000
Host	Rabbit
Clonality	Polyclonal
Isotype	IgG
Label	Unconjugated
Immunogen	Recombinant fusion protein containing a sequence corresponding to amino acids 1-125 of human BATF (NP_006390.1).
Format	Affinity purified polyclonal antibody supplied in PBS with 0.02% sodium azide and 50% glycerol, pH 7.3.
Storage	Shipped on wet ice. Store at -20°C. Stable for 24 months from date of receipt. Aliquoting is unnecessary for -20°C storage.
Precautions	Anti-BATF Rabbit pAb is for research use only and not for use in diagnostic or therapeutic procedures.

### Protein Information

Synonyms	SFA2; B-ATF; BATF1; SFA-2; BATF.
Calculated MW	Calculated MW: 14 kDa; Observed MW: 14 kDa
Uniprot ID	Q16520
Gene ID	10538
Background	The protein encoded by this gene is a nuclear basic leucine zipper protein that belongs to the AP-1/ATF superfamily of transcription factors. The leucine zipper of this protein mediates dimerization with members of the Jun family of proteins. This protein is thought to be a negative regulator of AP-1/ATF transcriptional events.

## Validation Images

---



Western blot analysis of various lysates using BATF Rabbit pAb (P102265) at 1:1,000 dilution.

Secondary antibody: HRP-conjugated Goat anti-Rabbit IgG (H+L) (LF102) at 1:10,000 dilution.

Lysates/proteins: 25 $\mu$ g per lane.

Blocking buffer: 3% nonfat dry milk in TBST.

Detection: ECL Kit.

Exposure time: 90s.