

Anti-NFIL3 Rabbit pAb

Purified Rabbit Polyclonal Antibody

Catalog # P101920

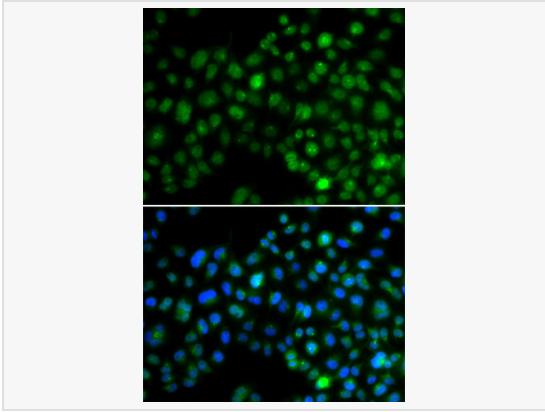
Product Information

Application	WB, IF (Cell)/ICC, ELISA
Reactivity	Human, Rat
Dilution	WB 1:500~1:1,000; IF 1:50~1:100
Host	Rabbit
Clonality	Polyclonal
Isotype	IgG
Label	Unconjugated
Immunogen	Recombinant fusion protein containing a sequence corresponding to amino acids 133-462 of human NFIL3 (NP_005375.2).
Format	Affinity purified polyclonal antibody supplied in PBS with 0.02% sodium azide and 50% glycerol, pH 7.3.
Storage	Shipped on wet ice. Store at -20°C. Stable for 24 months from date of receipt. Aliquoting is unnecessary for -20°C storage.
Precautions	Anti-NFIL3 Rabbit pAb is for research use only and not for use in diagnostic or therapeutic procedures.

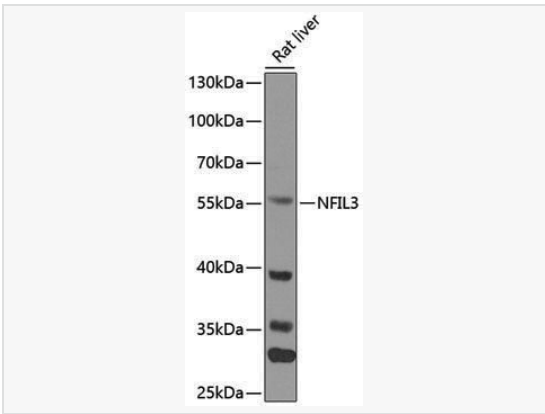
Protein Information

Synonyms	E4BP4; IL3BP1; NFIL3A; NF-IL3A; NFIL3.
Calculated MW	Calculated MW: 51 kDa; Observed MW: 55 kDa
Uniprot ID	Q16649
Gene ID	4783
Background	The protein encoded by this gene is a transcriptional regulator that binds as a homodimer to activating transcription factor (ATF) sites in many cellular and viral promoters. The encoded protein represses PER1 and PER2 expression and therefore plays a role in the regulation of circadian rhythm. Three transcript variants encoding the same protein have been found for this gene.

Validation Images



Immunofluorescence analysis of MCF-7 cells using NFIL3 Rabbit pAb (P101920).
Secondary antibody: Cy3-conjugated Goat anti-Rabbit IgG (H+L) at 1:500 dilution. Blue: DAPI for nuclear staining.



Western blot analysis of lysates from mouse liver, using NFIL3 Rabbit pAb (P101920) at 1:1,000 dilution.
Secondary antibody: HRP-conjugated Goat anti-Rabbit IgG (H+L) (LF102) at 1:10,000 dilution.
Lysates/proteins: 25 μ g per lane.
Blocking buffer: 3% nonfat dry milk in TBST.
Detection: ECL Enhanced Kit.
Exposure time: 60s.