

Anti-TAL1 Rabbit pAb

Purified Rabbit Polyclonal Antibody

Catalog # P101517

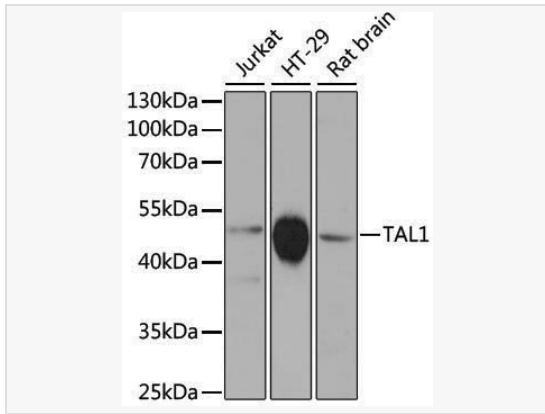
Product Information

Application	WB, ELISA
Reactivity	Human, Rat
Dilution	WB 1:500~1:2,000
Host	Rabbit
Clonality	Polyclonal
Isotype	IgG
Label	Unconjugated
Immunogen	Recombinant fusion protein containing a sequence corresponding to amino acids 242-331 of human TAL1 (NP_003180.1).
Format	Affinity purified polyclonal antibody supplied in PBS with 0.02% sodium azide and 50% glycerol, pH 7.3.
Storage	Shipped on wet ice. Store at -20°C. Stable for 24 months from date of receipt. Aliquoting is unnecessary for -20°C storage.
Precautions	Anti-TAL1 Rabbit pAb is for research use only and not for use in diagnostic or therapeutic procedures.

Protein Information

Synonyms	SCL; TCL5; tal-1; bHLHa17; TAL1.
Calculated MW	Calculated MW: 34 kDa; Observed MW: 50 kDa
Uniprot ID	P17542
Gene ID	6886
Background	Enables several functions, including DNA-binding transcription factor activity; E-box binding activity; and histone deacetylase binding activity. Involved in several processes, including myeloid cell differentiation; positive regulation of cellular component organization; and positive regulation of erythrocyte differentiation. Located in chromatin and nucleoplasm. Part of transcription regulator complex. Implicated in acute lymphoblastic leukemia.

Validation Images



Western blot analysis of various lysates using TAL1 Rabbit pAb (P101517) at 1:3,000 dilution.

Secondary antibody: HRP-conjugated Goat anti-Rabbit IgG (H+L) (LF102) at 1:10,000 dilution.

Lysates/proteins: 25 μ g per lane.

Blocking buffer: 3% nonfat dry milk in TBST.

Detection: ECL Kit.

Exposure time: 90s.