

Anti-MTBP Rabbit pAb

Purified Rabbit Polyclonal Antibody

Catalog # P101142

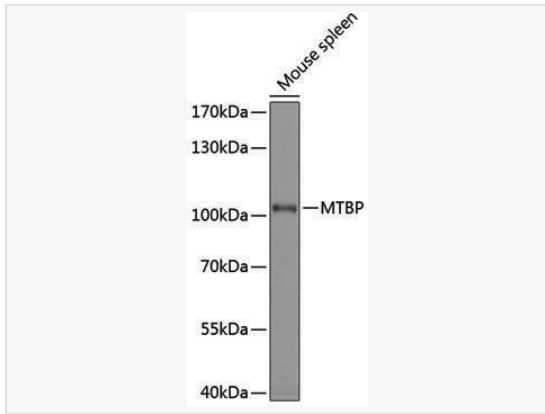
Product Information

Application	WB, ELISA
Reactivity	Mouse
Dilution	WB 1:500~1:2,000
Host	Rabbit
Clonality	Polyclonal
Isotype	IgG
Label	Unconjugated
Immunogen	Recombinant fusion protein containing a sequence corresponding to amino acids 1-300 of human MTBP (NP_071328.2).
Format	Affinity purified polyclonal antibody supplied in PBS with 0.02% sodium azide and 50% glycerol, pH 7.3.
Storage	Shipped on wet ice. Store at -20°C. Stable for 24 months from date of receipt. Aliquoting is unnecessary for -20°C storage.
Precautions	Anti-MTBP Rabbit pAb is for research use only and not for use in diagnostic or therapeutic procedures.

Protein Information

Synonyms	MDM2BP; MTBP.
Calculated MW	Calculated MW: 102 kDa; Observed MW: 102 kDa
Uniprot ID	Q96DY7
Gene ID	27085
Background	This gene encodes a protein that interacts with the oncoprotein mouse double minute 2. The encoded protein regulates progression through the cell cycle and may be involved in tumor formation.

Validation Images



Western blot analysis of lysates from mouse spleen, using MTBP Rabbit pAb (P101142) at 1:1,000 dilution.

Secondary antibody: HRP-conjugated Goat anti-Rabbit IgG (H+L) (LF102) at 1:10,000 dilution.

Lysates/proteins: 25 μ g per lane.

Blocking buffer: 3% nonfat dry milk in TBST.

Detection: ECL Kit.

Exposure time: 1s.