

## Anti-RCN1/RCN Rabbit mAb

Purified Recombinant Rabbit Monoclonal Antibody

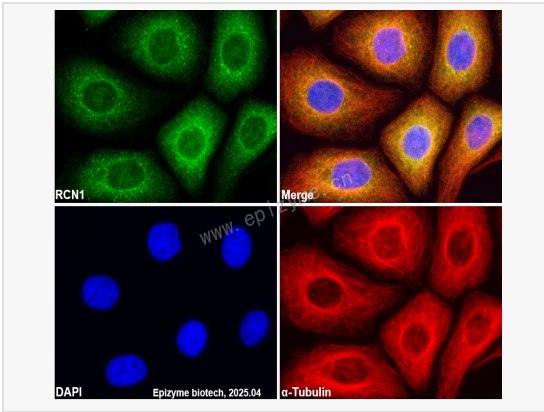
Catalog # R014993

### Product Information

Application	WB, IHC-P/IF (Tissue-P), IF (Cell)/ICC, ELISA
Reactivity	Human, Mouse, Rat
Dilution	WB 1:1,000~1:2,000; IHC-P 1:100~1:200; IF 1:100~1:200
Host	Rabbit
Clonality	Monoclonal
Clone No.	63E12P21
Isotype	IgG
Label	Unconjugated
Immunogen	A synthesized peptide derived from human RCN1
Format	Affinity purified monoclonal antibody supplied in PBS with 0.01% sodium azide and 50% glycerol, pH 7.3.
Storage	Shipped on wet ice. Store at -20°C. Stable for 24 months from date of receipt. Aliquoting is unnecessary for -20°C storage.
Precautions	Anti-RCN1/RCN Rabbit mAb [63E12P21] is for research use only and not for use in diagnostic or therapeutic procedures.

### Protein Information

Synonyms	Epididymis secretory protein Li 84, FLJ37041, HEL S 84, PIG20, Proliferation inducing gene 20, RCAL, RCN 1, RCN, rcn1, RCN1_HUMAN, Reticulocalbin 1, Reticulocalbin 1 EF hand calcium binding domain, Reticulocalbin-1, Reticulocalbin1.
Calculated MW	Calculated MW: 39 kDa; Observed MW: 44,46 kDa
Uniprot ID	Q15293
Gene ID	5954
Background	Reticulocalbin 1 is a calcium-binding protein located in the lumen of the ER. The protein contains six conserved regions with similarity to a high affinity Ca(+2)-binding motif, the EF-hand. High conservation of amino acid residues outside of these motifs, in comparison to mouse reticulocalbin, is consistent with a possible biochemical function besides that of calcium binding. In human endothelial and prostate cancer cell lines this protein localizes to the plasma membrane.[provided by RefSeq, Jan 2009]
Cellular Location	Endoplasmic reticulum lumen.



Immunofluorescence - Anti-RCN1/RCN Rabbit mAb [63E12P21]

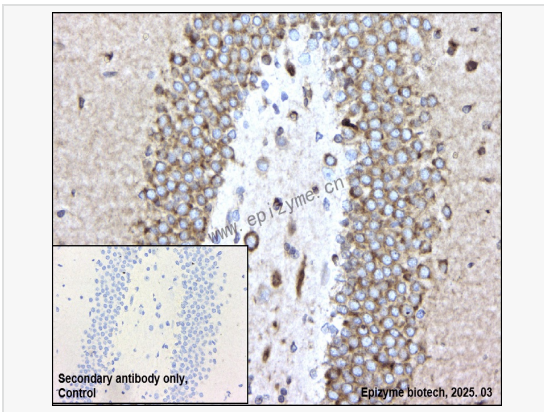
Sample: HeLa cells

The cells were fixed with 4% paraformaldehyde (10 min), permeabilized with 0.5% Triton X-100 for 10 minutes and then blocked with 5% BSA in 0.1% PBS-Tween for 0.5 hours.

Primary antibodies: R014993 at 1:100 dilution and  $\alpha$ -tubulin Mouse Monoclonal Antibody (Cat. No. LF209) at 1:100 dilution

Secondary antibodies: Goat anti-Rabbit (488) at 1:1,000 dilution (shown in green) and Goat anti-Mouse (555) at 1:1,000 dilution (shown in red)

Nuclei were stained with DAPI (shown in blue).



Immunohistochemistry - Anti-RCN1/RCN Rabbit mAb [63E12P21]

Sample: Paraformaldehyde-fixed, paraffin embedded rat brain tissue

Heat mediated antigen retrieval with Tris-EDTA buffer (pH 9.0) for 30 mins.

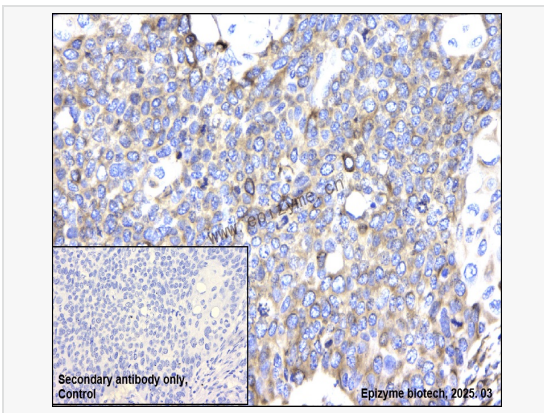
Primary antibody: R014993 at 1:200 dilution

Secondary antibody: Goat Anti-Rabbit IgG (H+L), HRP conjugated at 1:1,000 dilution DAB was used as the chromogen.

Counter stained with hematoxylin.

Positive/negative staining were presented.

Only the secondary antibody was used as the negative control.



Immunohistochemistry - Anti-RCN1/RCN Rabbit mAb [63E12P21]

Sample: Paraformaldehyde-fixed, paraffin embedded human lung cancer tissue

Heat mediated antigen retrieval with Tris-EDTA buffer (pH 9.0) for 30 mins.

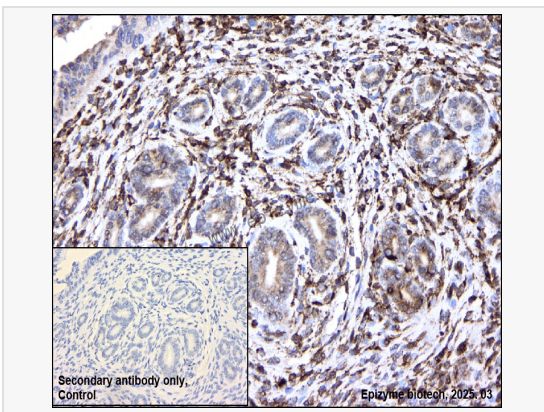
Primary antibody: R014993 at 1:200 dilution

Secondary antibody: Goat Anti-Rabbit IgG (H+L), HRP conjugated at 1:1,000 dilution DAB was used as the chromogen.

Counter stained with hematoxylin.

Positive/negative staining were presented.

Only the secondary antibody was used as the negative control.



Immunohistochemistry - Anti-RCN1/RCN Rabbit mAb [63E12P21]

Sample: Paraformaldehyde-fixed, paraffin embedded mouse uterus tissue

Heat mediated antigen retrieval with Tris-EDTA buffer (pH 9.0) for 30 mins.

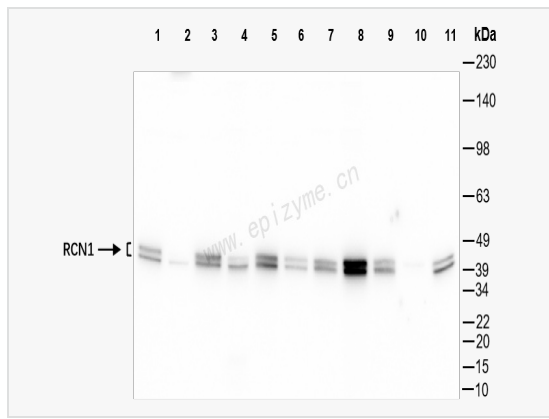
Primary antibody: R014993 at 1:200 dilution

Secondary antibody: Goat Anti-Rabbit IgG (H+L), HRP conjugated at 1:1,000 dilution DAB was used as the chromogen.

Counter stained with hematoxylin.

Positive/negative staining were presented.

Only the secondary antibody was used as the negative control.



Western Blot - Anti-RCN1/RCN Rabbit mAb [63E12P21]

All lanes: R014993 at 1:1,000 dilution

Lane 1: HeLa (Human cervix adenocarcinoma epithelial cell) whole cell lysates

Lane 2: HepG2 (Human hepatocarcinoma epithelial cell) whole cell lysates

Lane 3: T24 (Human bladder cancer epithelial cell) whole cell lysates

Lane 4: HCT116 (Human colorectal carcinoma epithelial cell) whole cell lysates

Lane 5: Caco2 (Human colorectal adenocarcinoma epithelial cell) whole cell lysates

Lane 6: SH-SY5Y (Human neuroblastoma epithelial cell) whole cell lysates

Lane 7: 293T (Human embryonic kidney cell) whole cell lysates

Lane 8: SCC-9 (Human tongue squamous carcinoma epithelial cell) whole cell lysates

Lane 9: C2C12 (Mouse myoblasts epithelial cell) whole cell lysates

Lane 10: Raw264.7 (Mouse mononuclear macrophage leukemia cell) whole cell lysates

Lane 11: PC-12 (Rat adrenal pheochromocytoma epithelial cell) whole cell lysates

Lysates/proteins at 10 µg per lane.

Secondary antibody: Goat Anti-Rabbit IgG (H+L), HRP Conjugated (Cat. No. LF102) at 1:5,000 dilution

Predicted band size: 39 kDa

Observed band size: 44,46 kDa

Developed using the ECL technique (Cat. No. SQ201).