

Anti-Cytochrome C Rabbit mAb

Purified Recombinant Rabbit Monoclonal Antibody

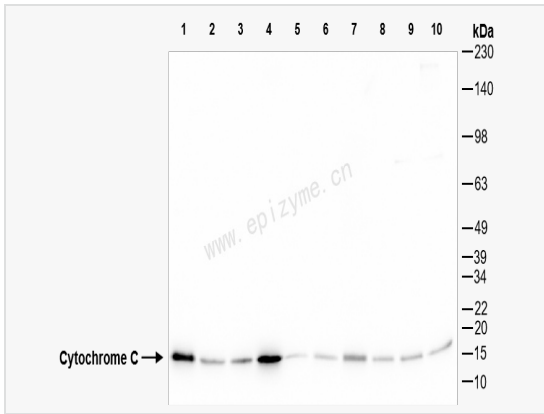
Catalog # R014985

Product Information

Application	WB, IHC-P/IF (Tissue-P), ELISA
Reactivity	Human, Mouse, Rat
Dilution	WB 1:1,000~1:5,000; IHC-P 1:1,000~1:4,000; IF 1:200~1:1,000
Host	Rabbit
Clonality	Monoclonal
Clone No.	54C49D48
Isotype	IgG
Label	Unconjugated
Immunogen	Recombinant protein of human Cytochrome C
Format	Affinity purified monoclonal antibody supplied in PBS with 0.01% sodium azide and 50% glycerol, pH 7.3.
Storage	Shipped on wet ice. Store at -20°C. Stable for 24 months from date of receipt. Aliquoting is unnecessary for -20°C storage.
Precautions	Anti-Cytochrome C Rabbit mAb [54C49D48] is for research use only and not for use in diagnostic or therapeutic procedures.

Protein Information

Synonyms	CYC, CYC_HUMAN, CYCS, Cytochrome c, Cytochrome c somatic, HCS, THC4.
Calculated MW	Calculated MW: 12 kDa; Observed MW: 14 kDa
Uniprot ID	P99999
Gene ID	54205
Background	This gene encodes a small heme protein that functions as a central component of the electron transport chain in mitochondria. The encoded protein associates with the inner membrane of the mitochondrion where it accepts electrons from cytochrome b and transfers them to the cytochrome oxidase complex. This protein is also involved in initiation of apoptosis. Mutations in this gene are associated with autosomal dominant nonsyndromic thrombocytopenia. Numerous processed pseudogenes of this gene are found throughout the human genome.[provided by RefSeq, Jul 2010]
Cellular Location	Mitochondrion matrix.



Western Blot - Anti-Cytochrome C Rabbit mAb [54C49D48]

All lanes: R014985 at 1:3,000 dilution

Lane 1: HeLa (Human cervix adenocarcinoma epithelial cell) whole cell lysates

Lane 2: HepG2 (Human hepatocarcinoma epithelial cell) whole cell lysates

Lane 3: HCT116 (Human colorectal carcinoma epithelial cell) whole cell lysates

Lane 4: SW620 (Human colorectal carcinoma epithelial cell) whole cell lysates

Lane 5: Caco2 (Human colorectal adenocarcinoma epithelial cell) whole cell lysates

Lane 6: 293T (Human embryonic kidney cell) whole cell lysates

Lane 7: SCC-9 (Human tongue squamous carcinoma epithelial cell) whole cell lysates

Lane 8: C2C12 (Mouse myoblasts epithelial cell) whole cell lysates

Lane 9: Raw264.7 (Mouse mononuclear macrophage leukemia cell) whole cell lysates

Lane 10: PC-12 (Rat adrenal pheochromocytoma epithelial cell) whole cell lysates

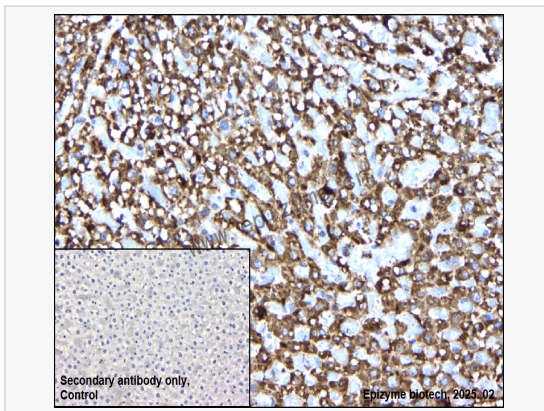
Lysates/proteins at 10 µg per lane.

Secondary antibody: Goat Anti-Rabbit IgG (H+L), HRP Conjugated (Cat. No. LF102) at 1:5,000 dilution

Predicted band size: 12 kDa

Observed band size: 14 kDa

Developed using the ECL technique (Cat. No. SQ201).



Immunohistochemistry - Anti-Cytochrome C Rabbit mAb [54C49D48]

Sample: Paraformaldehyde-fixed, paraffin embedded rat liver tissue

Heat mediated antigen retrieval with Tris-EDTA buffer (pH 9.0) for 30 mins.

Primary antibody: R014985 at 1:3,000 dilution

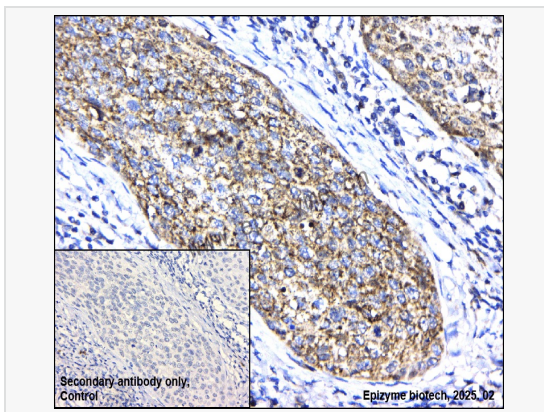
Secondary antibody: Goat Anti-Rabbit IgG (H+L), HRP conjugated at 1:1,000 dilution

DAB was used as the chromogen.

Counter stained with hematoxylin.

Positive/negative staining were presented.

Only the secondary antibody was used as the negative control.



Immunohistochemistry - Anti-Cytochrome C Rabbit mAb [54C49D48]

Sample: Paraformaldehyde-fixed, paraffin embedded human cervical cancer tissue

Heat mediated antigen retrieval with Tris-EDTA buffer (pH 9.0) for 30 mins.

Primary antibody: R014985 at 1:3,000 dilution

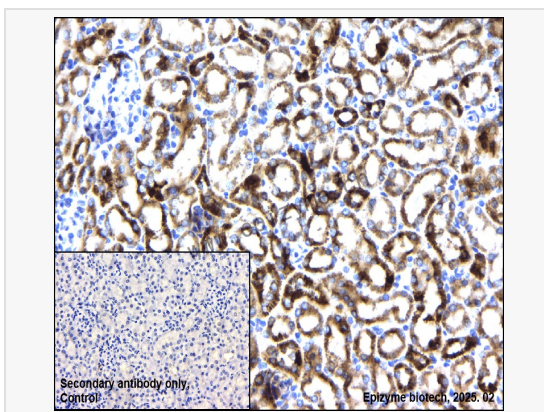
Secondary antibody: Goat Anti-Rabbit IgG (H+L), HRP conjugated at 1:1,000 dilution

DAB was used as the chromogen.

Counter stained with hematoxylin.

Positive/negative staining were presented.

Only the secondary antibody was used as the negative control.



Immunohistochemistry - Anti-Cytochrome C Rabbit mAb [54C49D48]

Sample: Paraformaldehyde-fixed, paraffin embedded mouse kidney tissue

Heat mediated antigen retrieval with Tris-EDTA buffer (pH 9.0) for 30 mins.

Primary antibody: R014985 at 1:3,000 dilution

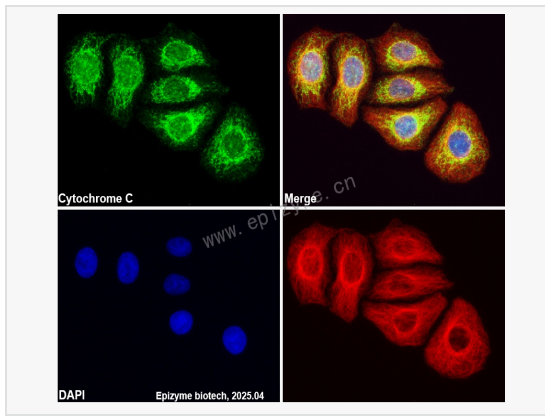
Secondary antibody: Goat Anti-Rabbit IgG (H+L), HRP conjugated at 1:1,000 dilution

DAB was used as the chromogen.

Counter stained with hematoxylin.

Positive/negative staining were presented.

Only the secondary antibody was used as the negative control.



Immunofluorescence - Anti-Cytochrome C Rabbit mAb [54C49D48]

Sample: HeLa cells

The cells were fixed with 4% paraformaldehyde (10 min), permeabilized with 0.5% Triton X-100 for 10 minutes and then blocked with 5% BSA in 0.1% PBS-Tween for 0.5 hours.

Primary antibodies: R014985 at 1:100 dilution and α -tubulin Mouse Monoclonal Antibody (Cat. No. LF209) at 1:100 dilution

Secondary antibodies: Goat anti-Rabbit (488) at 1:1,000 dilution (shown in green) and Goat anti-Mouse (555) at 1:1,000 dilution (shown in red)

Nuclei were stained with DAPI (shown in blue).