

Anti-MAT2A Rabbit mAb

Purified Recombinant Rabbit Monoclonal Antibody

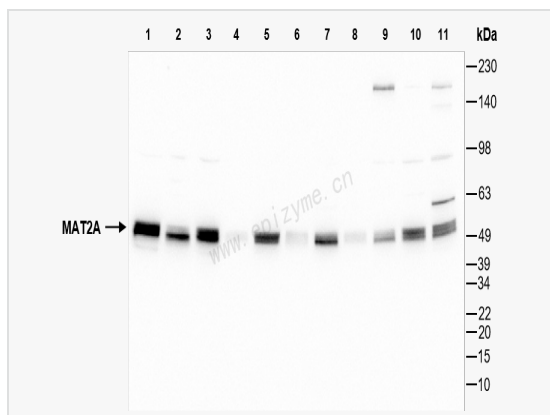
Catalog # R014861

Product Information

Application	WB, ELISA
Reactivity	Human, Mouse, Rat
Dilution	WB 1:1,000~1:2,000
Host	Rabbit
Clonality	Monoclonal
Clone No.	19J18H18
Isotype	IgG
Label	Unconjugated
Immunogen	A synthesized peptide derived from human MAT2A
Format	Affinity purified monoclonal antibody supplied in PBS with 0.01% sodium azide and 50% glycerol, pH 7.3.
Storage	Shipped on wet ice. Store at -20°C. Stable for 24 months from date of receipt. Aliquoting is unnecessary for -20°C storage.
Precautions	Anti-MAT2A Rabbit mAb [19J18H18] is for research use only and not for use in diagnostic or therapeutic procedures.

Protein Information

Synonyms	AdoMet synthase 2, AdoMet synthetase 2, AdoMet synthetase, AMS 2, AMS2, MAT 2, MAT 2A, MAT II, MAT-II, Mat2a, MATA 2, MATA2, MATII, Methionine adenosyltransferase 2, Methionine adenosyltransferase, Methionine adenosyltransferase II alpha, Methionine adenosyltransferase II, METK2_HUMAN, S adenosylmethionine synthetase gamma form, S adenosylmethionine synthetase isoform type 2, S-adenosylmethionine synthase isoform type-2, SAMS 2, SAMS2.
Calculated MW	Calculated MW: 44 kDa; Observed MW: 48 kDa
Uniprot ID	P31153
Gene ID	4144
Background	Catalyzes the formation of S-adenosylmethionine from methionine and ATP.



Western Blot - Anti-MAT2A Rabbit mAb [19J18H18]

All lanes: R014861 at 1:1,000 dilution

Lane 1: HeLa (Human cervix adenocarcinoma epithelial cell) whole cell lysates

Lane 2: HepG2 (Human hepatocarcinoma epithelial cell) whole cell lysates

Lane 3: HCT116 (Human colorectal carcinoma epithelial cell) whole cell lysates

Lane 4: U2OS (Human osteosarcoma epithelial cell) whole cell lysates

Lane 5: Caco2 (Human colorectal adenocarcinoma epithelial cell) whole cell lysates

Lane 6: Jurkat (Human T lymphocytic leukemia cell) whole cell lysates

Lane 7: 293T (Human embryonic kidney cell) whole cell lysates

Lane 8: SCC-9 (Human tongue squamous carcinoma epithelial cell) whole cell lysates

Lane 9: C2C12 (Mouse myoblasts epithelial cell) whole cell lysates

Lane 10: Raw264.7 (Mouse mononuclear macrophage leukemia cell) whole cell lysates

Lane 11: PC-12 (Rat adrenal pheochromocytoma epithelial cell) whole cell lysates

Lysates/proteins at 10 µg per lane.

Secondary antibody: Goat Anti-Rabbit IgG (H+L), HRP Conjugated (Cat. No. LF102) at 1:5,000 dilution

Predicted band size: 44 kDa

Observed band size: 48 kDa

Developed using the ECL technique (Cat. No. SQ201).