

Anti-Elp4 Rabbit mAb

Purified Recombinant Rabbit Monoclonal Antibody

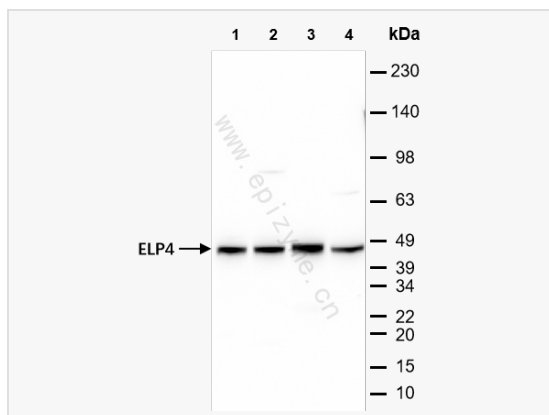
Catalog # R014648

Product Information

Application	WB, IHC-P/IF (Tissue-P), ELISA
Reactivity	Human, Mouse, Rat
Dilution	WB 1:1,000~1:2,000; IHC-P 1:100~1:200; IF 1:100~1:200
Host	Rabbit
Clonality	Monoclonal
Clone No.	75G07M89
Isotype	IgG
Label	Unconjugated
Immunogen	A synthesized peptide derived from human ELP4
Format	Affinity purified monoclonal antibody supplied in PBS with 0.01% sodium azide and 50% glycerol, pH 7.3.
Storage	Shipped on wet ice. Store at -20°C. Stable for 24 months from date of receipt. Aliquoting is unnecessary for -20°C storage.
Precautions	Anti-Elp4 Rabbit mAb [75G07M89] is for research use only and not for use in diagnostic or therapeutic procedures.

Protein Information

Synonyms	C11orf19, dJ68P15A.1, elongation protein 4 homolog (S. cerevisiae), Elongation protein 4 homolog, Elongator complex protein 4, ELP4, ELP4_HUMAN, FLJ20498, hELP4, PAX6 neighbor gene protein, PAX6NEB, PAXNEB.
Calculated MW	Calculated MW: 47 kDa; Observed MW: 47 kDa
Uniprot ID	Q96EB1
Gene ID	824
Background	Acts as subunit of the RNA polymerase II elongator complex, which is a histone acetyltransferase component of the RNA polymerase II (Pol II) holoenzyme and is involved in transcriptional elongation. Elongator may play a role in chromatin remodeling and is involved in acetylation of histones H3 and probably H4.
Cellular Location	Cytoplasm. Nucleus.
Tissue Location	Widely expressed.



Western Blot - Anti-Elp4 Rabbit mAb [75G07M89]

All lanes: R014648 at 1:1,000 dilution

Lane 1: HeLa (Human cervix adenocarcinoma epithelial cell) whole cell lysates

Lane 2: HCT116 (Human colorectal carcinoma epithelial cell) whole cell lysates

Lane 3: Rat spleen whole tissue lysates

Lane 4: Mouse heart whole tissue lysates

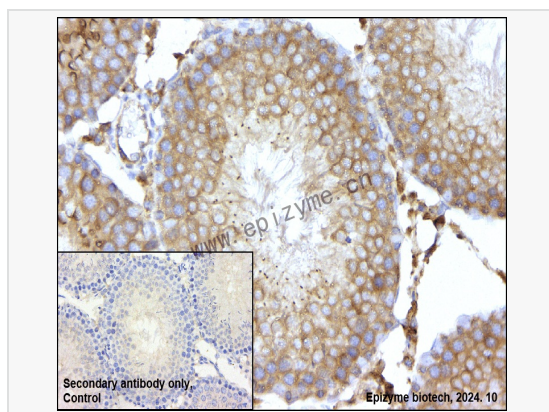
Lysates/proteins at 10 µg per lane.

Secondary antibody: Goat Anti-Rabbit IgG (H+L), HRP Conjugated (Cat. No. LF102) at 1:5,000 dilution

Predicted band size: 47 kDa

Observed band size: 47 kDa

Developed using the ECL technique (Cat. No. SQ201).



Immunohistochemistry - Anti-Elp4 Rabbit mAb [75G07M89]

Sample: Paraformaldehyde-fixed, paraffin embedded rat testis tissue

Heat mediated antigen retrieval with Tris-EDTA buffer (pH 9.0) for 30 mins.

Primary antibody: R014648 at 1:200 dilution

Secondary antibody: Goat Anti-Rabbit IgG (H+L), HRP conjugated at 1:1,000 dilution

DAB was used as the chromogen.

Counter stained with hematoxylin.

Positive/negative staining were presented.

Only the secondary antibody was used as the negative control.