

Anti-GCLC Rabbit mAb

Purified Recombinant Rabbit Monoclonal Antibody

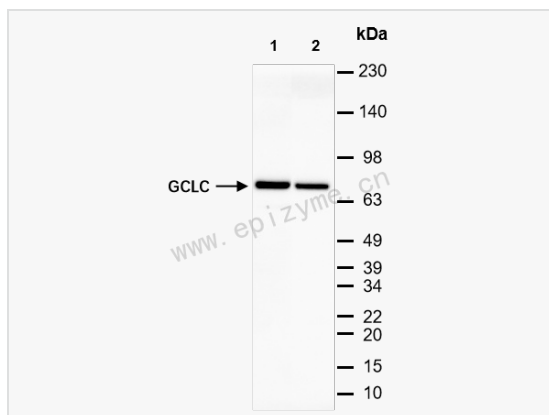
Catalog # R014373

Product Information

Application	WB, ELISA, IF (Cell)/ICC
Reactivity	Human
Dilution	WB 1:1,000~1:2,000; IF 1:100~1:200
Host	Rabbit
Clonality	Monoclonal
Clone No.	59T44H33
Isotype	IgG
Label	Unconjugated
Immunogen	Recombinant protein of human SEPT7
Format	Affinity purified monoclonal antibody supplied in PBS with 0.01% sodium azide and 50% glycerol, pH 7.3.
Storage	Shipped on wet ice. Store at -20°C. Stable for 24 months from date of receipt. Aliquoting is unnecessary for -20°C storage.
Precautions	Anti-GCLC Rabbit mAb [59T44H33] is for research use only and not for use in diagnostic or therapeutic procedures.

Protein Information

Synonyms	EC 6.3.2.2, Gamma ECS, Gamma glutamylcysteine synthetase, Gamma-ECS, Gamma-glutamylcysteine synthetase, GCL, Gclc, GCS, GCS heavy chain, GLCL, GLCLC, Glutamate cysteine ligase catalytic subunit, Glutamate--cysteine ligase catalytic subunit, GSHI_HUMAN.
Calculated MW	Calculated MW: 73 kDa; Observed MW: 73 kDa
Uniprot ID	P48506
Gene ID	2729
Background	Sulfur metabolism; glutathione biosynthesis; glutathione from L-cysteine and L-glutamate: step 1/2.



Western Blot - Anti-GCLC Rabbit mAb [59T44H33]

All lanes: R014373 at 1:1,000 dilution

Lane 1: HepG2 (Human hepatocarcinoma epithelial cell) whole cell lysates

Lane 2: Rat kidney whole tissue lysates

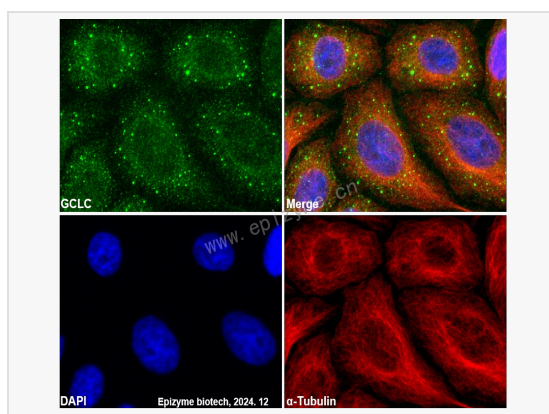
Lysates/proteins at 10 μ g per lane.

Secondary antibody: Goat Anti-Rabbit IgG(H+L), HRP Conjugated (Cat. No. LF102) at 1:5,000 dilution

Predicted band size: 73 kDa

Observed band size: 73 kDa

Developed using the ECL technique (Cat. No. SQ201).



Immunofluorescence - Anti-GCLC Rabbit mAb [59T44H33]

Sample: HeLa cells

The cells were fixed with 4% paraformaldehyde (10 min), permeabilized with 0.5% Triton X-100 for 10 minutes and then blocked with 5% BSA in 0.1% PBS-Tween for 0.5 hours.

Primary antibodies: R014373 at 1:100 dilution and α -tubulin Mouse Monoclonal Antibody (Cat. No. LF209) at 1:100 dilution

Secondary antibodies: Goat anti-Rabbit (488) at 1:1,000 dilution (shown in green) and Goat anti-Mouse (555) at 1:1,000 dilution (shown in red)

Nuclei were stained with DAPI (shown in blue).