

## Anti-AP1G1 Rabbit mAb

Purified Recombinant Rabbit Monoclonal Antibody

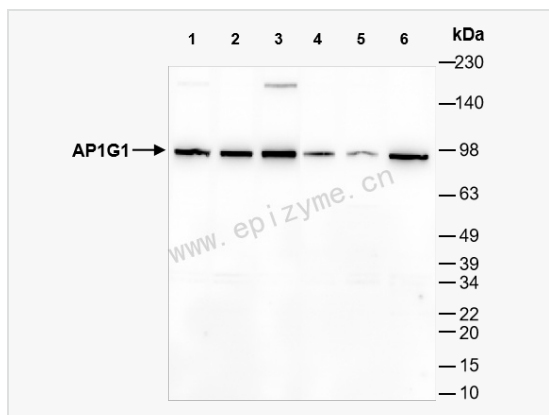
Catalog # R014359

### Product Information

Application	WB, IHC-P/IF (Tissue-P), ELISA
Reactivity	Human, Mouse, Rat
Dilution	WB 1:1,000~1:2,000; IHC-P 1:100~1:200; IF 1:100~1:200
Host	Rabbit
Clonality	Monoclonal
Clone No.	58K11L45
Isotype	IgG
Label	Unconjugated
Immunogen	Recombinant protein of human IGFBP2
Format	Affinity purified monoclonal antibody supplied in PBS with 0.01% sodium azide and 50% glycerol, pH 7.3.
Storage	Shipped on wet ice. Store at -20°C. Stable for 24 months from date of receipt. Aliquoting is unnecessary for -20°C storage.
Precautions	Anti-AP1G1 Rabbit mAb [58K11L45] is for research use only and not for use in diagnostic or therapeutic procedures.

### Protein Information

Synonyms	Adapter-related protein complex 1 subunit gamma-1, Adaptor protein complex AP 1 gamma 1 subunit, Adaptor protein complex AP 1 subunit gamma 1, Adaptor protein complex AP-1 subunit gamma-1, Adaptor related protein complex 1 gamma 1 subunit, ADTG, AP 1 complex subunit gamma 1, AP-1 complex subunit gamma-1, AP1G1, AP1G1_HUMAN, CLAPG1, Clathrin assembly protein complex 1 gamma 1 large chain, Clathrin assembly protein complex 1 gamma large chain, Clathrin assembly protein complex 1 gamma-1 large chain, Clathrin associated/assembly/adaptor protein large gamma 1, Gamma1 adaptin, Gamma1-adaptin, Golgi adaptor HA1/AP1 adaptin gamma subunit, Golgi adaptor HA1/AP1 adaptin subunit gamma 1, Golgi adaptor HA1/AP1 adaptin subunit gamma-1, MGC18255.
Calculated MW	Calculated MW: 91 kDa; Observed MW: 91 kDa
Uniprot ID	O43747
Gene ID	164
Background	Subunit of clathrin-associated adaptor protein complex 1 that plays a role in protein sorting in the late-Golgi/trans-Golgi network (TGN) and/or endosomes. The AP complexes mediate both the recruitment of clathrin to membranes and the recognition of sorting signals within the cytosolic tails of transmembrane cargo molecules.
Cellular Location	Golgi apparatus. Cytoplasmic vesicle > clathrin-coated vesicle membrane. Component of the coat surrounding the cytoplasmic face of coated vesicles located at the Golgi complex.
Tissue Location	Widely expressed.



Western Blot - Anti-AP1G1 Rabbit mAb [58K11L45]

All lanes: R014359 at 1:1,000 dilution

Lane 1: HeLa (Human cervix adenocarcinoma epithelial cell) whole cell lysates

Lane 2: HepG2 (Human hepatocarcinoma epithelial cell) whole cell lysates

Lane 3: HCT116 (Human colorectal carcinoma epithelial cell) whole cell lysates

Lane 4: T24 (Human bladder cancer epithelial cell) whole cell lysates

Lane 5: U2OS (Human osteosarcoma epithelial cell) whole cell lysates

Lane 6: Raw264.7 (Mouse mononuclear macrophage leukemia cell) whole cell lysates

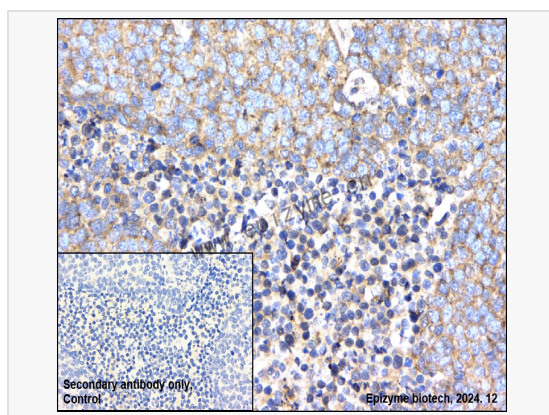
Lysates/proteins at 10 µg per lane.

Secondary antibody: Goat Anti-Rabbit IgG(H+L), HRP Conjugated (Cat. No. LF102) at 1:5,000 dilution

Predicted band size: 91 kDa

Observed band size: 91 kDa

Developed using the ECL technique (Cat. No. SQ201).



Immunohistochemistry - Anti-AP1G1 Rabbit mAb [58K11L45]

Sample: Paraformaldehyde-fixed, paraffin embedded human lung cancer tissue

Heat mediated antigen retrieval with Tris-EDTA buffer (pH 9.0) for 30 mins.

Primary antibody: R014359 at 1:200 dilution

Secondary antibody: Goat Anti-Rabbit IgG (H+L), HRP conjugated at 1:1,000 dilution

DAB was used as the chromogen.

Counter stained with hematoxylin.

Positive/negative staining were presented.

Only the secondary antibody was used as the negative control.