

Anti-alpha Sarcoglycan Rabbit mAb

Purified Recombinant Rabbit Monoclonal Antibody

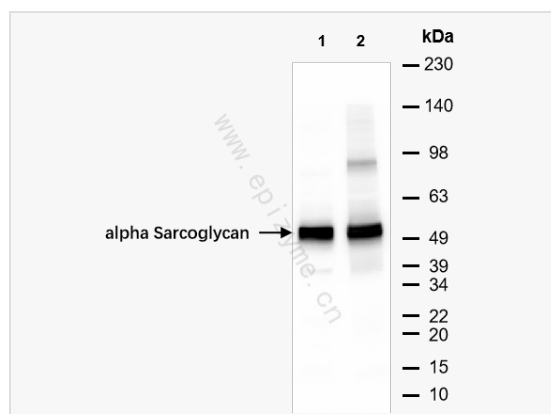
Catalog # R010430

Product Information

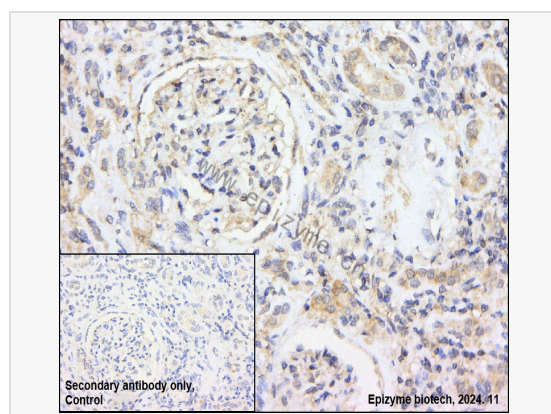
Application	WB, IHC-P/IF (Tissue-P), ELISA
Reactivity	Rat, Human, Mouse
Dilution	WB 1:1,000~1:2,000; IHC-P 1:100~1:200; IF 1:100~1:200
Host	Rabbit
Clonality	Monoclonal
Clone No.	48T48D33
Isotype	IgG
Label	Unconjugated
Immunogen	A synthesized peptide derived from human alpha Sarcoglycan
Format	Affinity purified monoclonal antibody supplied in PBS with 0.01% sodium azide and 50% glycerol, pH 7.3.
Storage	Shipped on wet ice. Store at -20°C. Stable for 24 months from date of receipt. Aliquoting is unnecessary for -20°C storage.
Precautions	Anti-alpha Sarcoglycan Rabbit mAb [48T48D33] is for research use only and not for use in diagnostic or therapeutic procedures.

Protein Information

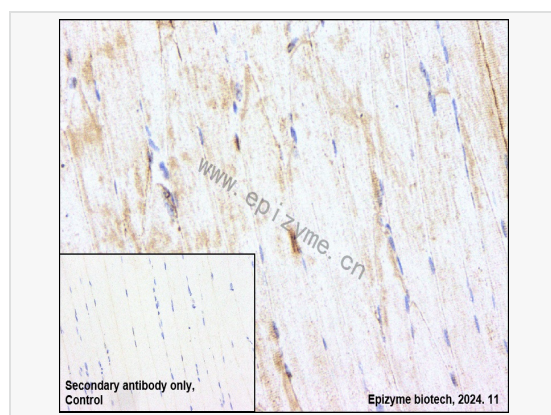
Synonyms	50 DAG, 50 kDa dystrophin associated glycoprotein, 50 kDa dystrophin-associated glycoprotein, 50DAG, 50kD DAG, 59kDa, A2, adhalin, ADL, Alpha SG, Alpha-sarcoglycan, Alpha-SG, Asg, DAG2, DMDA2, Dystroglycan 2, Dystroglycan-2, LGMD2D, sarcoglycan, alpha (dystrophin-associated glycoprotein), SCARMD1, Sgca, SGCA_HUMAN.
Calculated MW	Calculated MW: 43 kDa; Observed MW: 50 kDa
Uniprot ID	Q16586
Gene ID	6442
Background	This gene encodes a component of the dystrophin-glycoprotein complex (DGC), which is critical to the stability of muscle fiber membranes and to the linking of the actin cytoskeleton to the extracellular matrix. Its expression is thought to be restricted to striated muscle. Mutations in this gene result in type 2D autosomal recessive limb-girdle muscular dystrophy. Multiple transcript variants encoding different isoforms have been found for this gene. [provided by RefSeq, Oct 2008]
Cellular Location	Cell membrane > sarcolemma. Cytoplasm > cytoskeleton.
Tissue Location	Most strongly expressed in skeletal muscle. Also expressed in cardiac muscle and, at much lower levels, in lung. In the fetus, most abundant in cardiac muscle and, at lower levels, in lung. Also detected in liver and kidney. Not expressed in brain.



Western Blot - Anti-alpha Sarcoglycan Rabbit mAb [48T48D33]
 All lanes: R010430 at 1:1,000 dilution
 Lane 1 : Rat muscle whole tissue lysates
 Lane 2 : Mouse heart whole tissue lysates
 Lysates/proteins at 10 µg per lane.
 Secondary antibody: Goat Anti-Rabbit IgG(H+L), HRP Conjugated (Cat. No. LF102) at 1:5,000 dilution
 Predicted band size: 43 kDa
 Observed band size: 50 kDa
 Developed using the ECL technique (Cat. No. SQ201).



Immunohistochemistry - Anti-alpha Sarcoglycan Rabbit mAb [48T48D33]
 Sample: Paraformaldehyde-fixed, paraffin embedded human renal carcinoma tissue
 Heat mediated antigen retrieval with Tris-EDTA buffer (pH 9.0) for 30 mins.
 Primary antibody: R010430 at 1:200 dilution
 Secondary antibody: Goat Anti-Rabbit IgG (H+L), HRP conjugated at 1:1,000 dilution
 DAB was used as the chromogen.
 Counter stained with hematoxylin.
 Positive/negative staining were presented.
 Only the secondary antibody was used as the negative control.



Immunohistochemistry - Anti-alpha Sarcoglycan Rabbit mAb [48T48D33]
 Sample: Paraformaldehyde-fixed, paraffin embedded mouse muscle tissue
 Heat mediated antigen retrieval with Tris-EDTA buffer (pH 9.0) for 30 mins.
 Primary antibody: R010430 at 1:200 dilution
 Secondary antibody: Goat Anti-Rabbit IgG (H+L), HRP conjugated at 1:1,000 dilution
 DAB was used as the chromogen.
 Counter stained with hematoxylin.
 Positive/negative staining were presented.
 Only the secondary antibody was used as the negative control.