

## Anti-ENDOGL1/ENGL Rabbit mAb

Purified Recombinant Rabbit Monoclonal Antibody

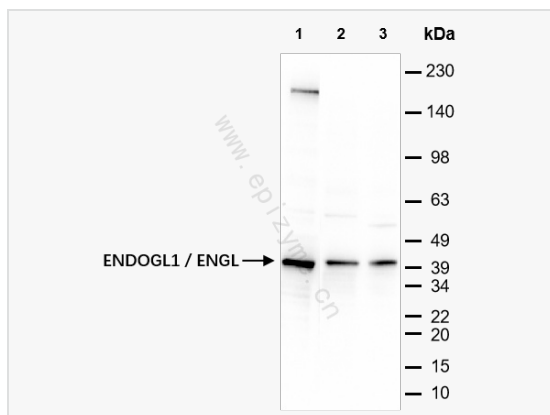
Catalog # R014173

### Product Information

Application	WB, ELISA
Reactivity	Human
Dilution	WB 1:1,000~1:2,000
Host	Rabbit
Clonality	Monoclonal
Clone No.	46J21K14
Isotype	IgG
Label	Unconjugated
Immunogen	A synthesized peptide derived from human ENDOGL1 / ENGL
Format	Affinity purified monoclonal antibody supplied in PBS with 0.01% sodium azide and 50% glycerol, pH 7.3.
Storage	Shipped on wet ice. Store at -20°C. Stable for 24 months from date of receipt. Aliquoting is unnecessary for -20°C storage.
Precautions	Anti-ENDOGL1/ENGL Rabbit mAb [46J21K14] is for research use only and not for use in diagnostic or therapeutic procedures.

### Protein Information

Synonyms	Endo G like 1, Endo G-like 1, Endo/exonuclease (5'-3'), endonuclease G like, ENDOGL 1, ENDOGL1, ENDOGL2, Endonuclease G like 1, Endonuclease G like 2, Endonuclease G-like 1, ENGL a, ENGL, ENGL B, ENGLA, ENGLB, Exog, EXOG_HUMAN, MGC125944, MGC125945, mitochondrial, Nuclease EXOG, Nuclease EXOG mitochondrial.
Calculated MW	Calculated MW: 41 kDa; Observed MW: 41 kDa
Uniprot ID	Q9Y2C4
Gene ID	9941
Background	Endo/exonuclease with nicking activity towards supercoiled DNA, a preference for single stranded DNA and 5'-3' exonuclease activity.
Cellular Location	Mitochondrion inner membrane.
Tissue Location	Ubiquitous.



Western Blot - Anti-ENDOGL1/ENGL Rabbit mAb [46J21K14]

All lanes: R014173 at 1:1,000 dilution

Lane 1: HeLa (Human cervix adenocarcinoma epithelial cell) whole cell lysates

Lane 2: A431 (Human epidermoid teratoma cell line) whole cell lysates

Lane 3: T24 (Human bladder cancer epithelial cell) whole cell lysates

Lysates/proteins at 10  $\mu$ g per lane.

Secondary antibody: Goat Anti-Rabbit IgG(H+L), HRP Conjugated (Cat. No. LF102) at 1:5,000 dilution

Predicted band size: 41 kDa

Observed band size: 41 kDa

Developed using the ECL technique (Cat. No. SQ201).