

## Anti-14-3-3 alpha/beta Rabbit mAb

Purified Recombinant Rabbit Monoclonal Antibody

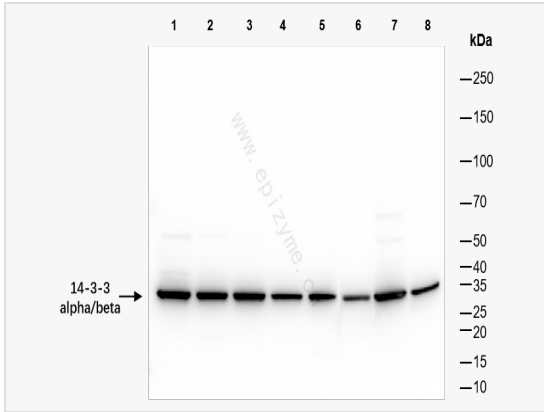
Catalog # R014074

### Product Information

Application	WB, ELISA, IHC-P/IF (Tissue-P), IF (Cell)/ICC
Reactivity	Mouse, Rat, Human
Dilution	WB 1:1,000~1:2,000; IHC-P 1:200; IF 1:100
Host	Rabbit
Clonality	Monoclonal
Clone No.	70P10Q35
Isotype	IgG
Label	Unconjugated
Immunogen	A synthesized peptide derived from human 14-3-3 alpha + beta
Format	Affinity purified monoclonal antibody supplied in PBS with 0.01% sodium azide and 50% glycerol, pH 7.3.
Storage	Shipped on wet ice. Store at -20°C. Stable for 24 months from date of receipt. Aliquoting is unnecessary for -20°C storage.
Precautions	Anti-14-3-3 alpha/beta Rabbit mAb [70P10Q35] is for research use only and not for use in diagnostic or therapeutic procedures.

### Protein Information

Synonyms	14 3 3 protein beta/alpha, Brain protein 14 3 3 beta isoform, GW128, HS 1, KCIP-1, KCIP1, Protein 1054, Protein kinase C inhibitor protein 1, YWHAA, YWHAB.
Calculated MW	Calculated MW: 28 kDa; Observed MW: 28 kDa
Uniprot ID	P31946
Background	Adapter protein implicated in the regulation of a large spectrum of both general and specialized signaling pathways. Binds to a large number of partners, usually by recognition of a phosphoserine or phosphothreonine motif. Binding generally results in the modulation of the activity of the binding partner. Negative regulator of osteogenesis.



Western Blot - Anti-14-3-3 alpha/beta Rabbit mAb [70P10Q35]

All lanes: R014074 at 1:2,000 dilution

Lane 1: HeLa (Human cervix adenocarcinoma epithelial cell) whole cell lysates

Lane 2: HepG2 (Human hepatocarcinoma epithelial cell) whole cell lysates

Lane 3: HCT116 (Human colorectal carcinoma epithelial cell) whole cell lysates

Lane 4: A431 (Human epidermoid teratoma cell line) whole cell lysates

Lane 5: T24 (Human bladder cancer epithelial cell) whole cell lysates

Lane 6: Mouse heart whole tissue lysates

Lane 7: Mouse brain whole tissue lysates

Lane 8: Mouse muscle whole tissue lysates

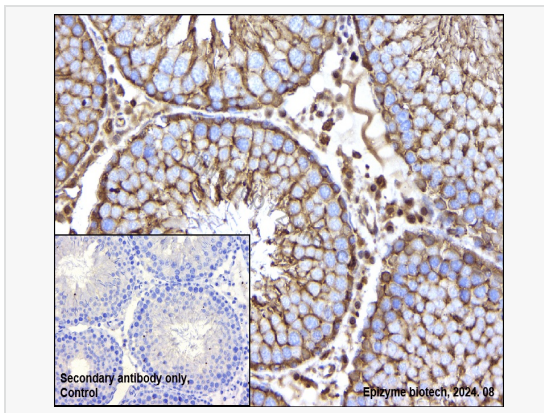
Lysates/proteins at 10 µg per lane.

Secondary antibody: Goat Anti-Rabbit IgG(H+L), HRP Conjugated (Cat. No. LF102) at 1:5,000 dilution

Predicted band size: 28 kDa

Observed band size: 28 kDa

Developed using the ECL technique (Cat. No. SQ201).



Immunohistochemistry - Anti-14-3-3 alpha/beta Rabbit mAb [70P10Q35]

Sample: Paraformaldehyde-fixed, paraffin embedded rat testis tissue

Heat mediated antigen retrieval with Tris-EDTA buffer (pH 9.0) for 30 mins.

Primary antibody: R014074 at 1:200 dilution

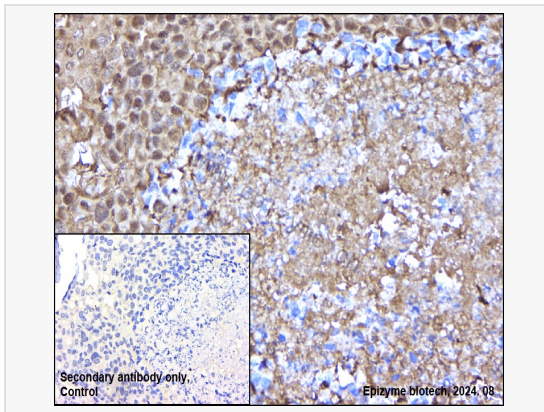
Secondary antibody: Goat Anti-Rabbit IgG (H+L), HRP conjugated at 1:1,000 dilution

DAB was used as the chromogen.

Counter stained with hematoxylin.

Positive/negative staining were presented.

Only the secondary antibody was used as the negative control.



Immunohistochemistry - Anti-14-3-3 alpha/beta Rabbit mAb [70P10Q35]

Sample: Paraformaldehyde-fixed, paraffin embedded human breast cancer tissue

Heat mediated antigen retrieval with Tris-EDTA buffer (pH 9.0) for 30 mins.

Primary antibody: R014074 at 1:200 dilution

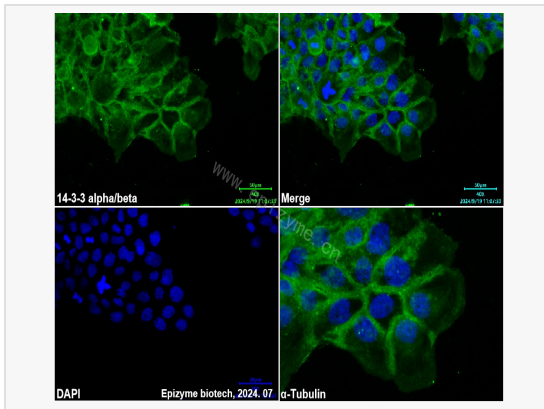
Secondary antibody: Goat Anti-Rabbit IgG (H+L), HRP conjugated at 1:1,000 dilution

DAB was used as the chromogen.

Counter stained with hematoxylin.

Positive/negative staining were presented.

Only the secondary antibody was used as the negative control.



Immunofluorescence - Anti-14-3-3 alpha/beta Rabbit mAb [70P10Q35]

Sample: A431 cells

The cells were fixed with 4% paraformaldehyde (10 min), permeabilized with 0.5% Triton X-100 for 10 minutes and then blocked with 5% BSA in 0.1% PBS-Tween for 0.5 hours.

Primary antibodies: R014074 at 1:100 dilution

Secondary antibodies: Goat anti-Rabbit (488) at 1:1,000 dilution (shown in green)

Nuclei were stained with DAPI (shown in blue).