

Anti-CD31 Rabbit pAb

Purified Rabbit Polyclonal Antibody

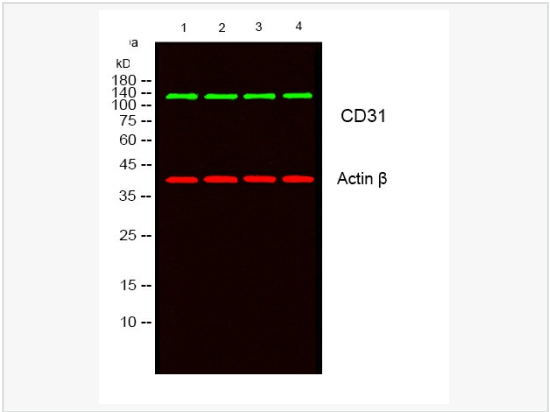
Catalog # P010173

Product Information

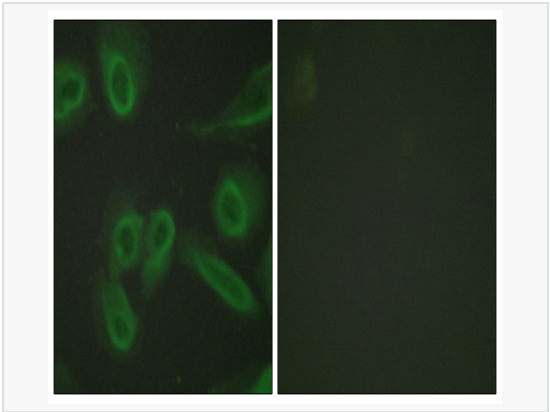
Application	ELISA, WB, ICC/IF (Cell)
Reactivity	Human, Mouse
Dilution	WB 1:500~1:1,000; IF 1:50~1:200; ELISA 1:10,000
Host	Rabbit
Clonality	Polyclonal
Isotype	IgG
Label	Unconjugated
Immunogen	synthesized peptide of human PECAM-1.
Format	Buffer System: Liquid in PBS containing 50% glycerol, 0.5% BSA and 0.02% sodium azide, pH 7.3. Purification: Affinity Purified.
Storage	Shipped on wet ice. Store at -20°C. Stable for 24 months from date of receipt. Aliquoting is unnecessary for -20°C storage.
Precautions	Anti-CD31 antibody is for research use only and not for use in diagnostic or therapeutic procedures.

Protein Information

Synonyms	Platelet endothelial cell adhesion molecule, PECAM-1, EndoCAM, GPIIA', PECA1, CD antigen CD31.
Calculated MW	Calculated MW: 83 kDa; Observed MW: 130-140 kDa
Uniprot ID	P16284
Gene ID	5175
Background	PECAM-1 a cell adhesion molecule expressed on platelets and at endothelial cell intercellular junctions. Plays a role in modulation of integrin-mediated cell adhesion, transendothelial migration, angiogenesis, apoptosis, cell migration, negative regulation of immune cell signaling, autoimmunity, macrophage phagocytosis, IgE-mediated anaphylaxis and thrombosis. Undergoes alternative splicing, generating multiple isoforms in vascular beds of various tissues.



Western blot analysis of CD31 in HepG2, K562, L929, mouse brain lysates using CD31 antibody.



Immunofluorescence analysis of CD31 in HeLa using CD31 antibody. The picture on the right is blocked using synthesized peptide.