

Anti-Cytochrome C Rabbit mAb

Purified Rabbit Monoclonal Antibody

Catalog # R012733

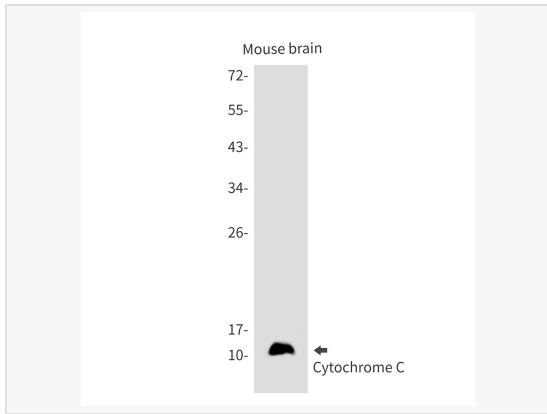
Product Information

Application	WB, IHC-P/IF (Tissue-P), IP, ELISA
Reactivity	Human, Mouse, Rat
Dilution	WB 1:500~1:1,000; IHC-P 1:50~1:100; IP 1:20
Host	Rabbit
Clonality	Monoclonal
Clone No.	13K37M26
Isotype	IgG
Label	Unconjugated
Immunogen	A synthetic peptide of human Cytochrome C
Format	Buffer System: 50mM Tris-Glycine(pH 7.4), 0.15M NaCl, 40% Glycerol, 0.01% Sodium azide and 0.05% BSA Purification: Affinity Purified.
Storage	Shipped on wet ice. Store at -20°C. Stable for 24 months from date of receipt. Aliquoting is unnecessary for -20°C storage.
Precautions	Anti-Cytochrome C antibody [13K37M26] is for research use only and not for use in diagnostic or therapeutic procedures.

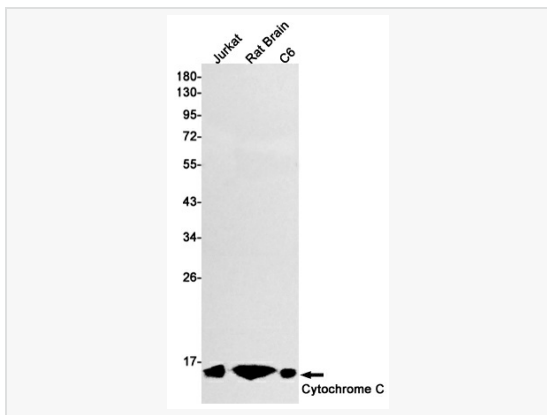
Protein Information

Synonyms	CYCS, CYC, Cytochrome c.
Calculated MW	Calculated MW: 12 kDa; Observed MW: 12 kDa
Uniprot ID	P99999
Gene ID	54205
Background	CYCS Electron carrier protein. The oxidized form of the cytochrome c heme group can accept an electron from the heme group of the cytochrome c1 subunit of cytochrome reductase. Cytochrome c then transfers this electron to the cytochrome oxidase complex, the final protein carrier in the mitochondrial electron-transport chain.

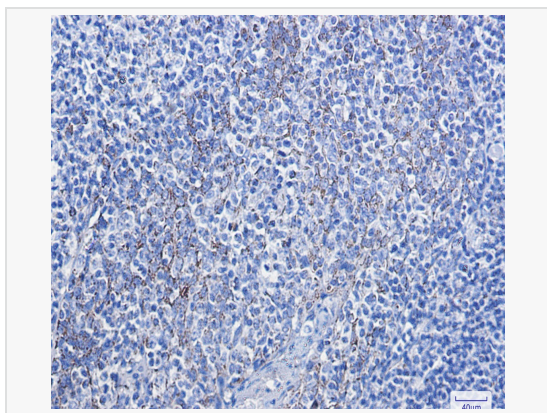
Validation Images



Western blot analysis of Cytochrome C in mouse brain lysates using Cytochrome C antibody.



Western blot analysis of Cytochrome C in Jurkat, rat Brain, C6 lysates using Cytochrome C antibody.



Immunohistochemistry analysis of paraffin-embedded Human tonsil using Cytochrome C antibody. High-pressure and temperature Sodium Citrate pH 6.0 was used for antigen retrieval.