

## Anti-Vimentin Rabbit mAb

Purified Rabbit Monoclonal Antibody

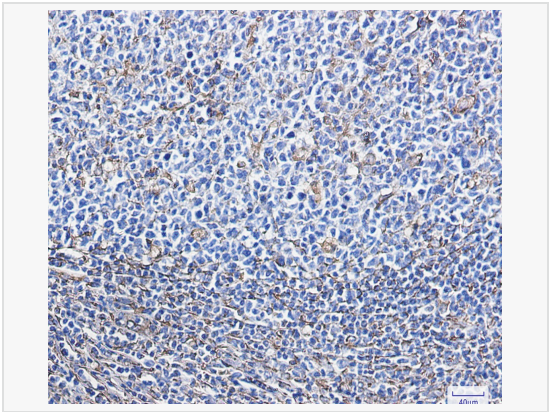
Catalog # R010790

### Product Information

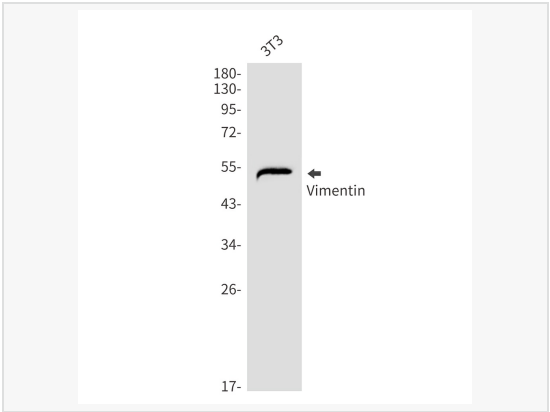
Application	WB, ICC/IF (Cell), IHC-F/IF (Tissue-F), ELISA, IHC-P/IF (Tissue-P)
Reactivity	Hamster, Human, Mouse, Rat
Dilution	WB 1:500~1:1,000; IHC-P 1:50~1:100; IF 1:50~1:200
Host	Rabbit
Clonality	Monoclonal
Clone No.	30L14K32
Isotype	IgG
Label	Unconjugated
Immunogen	A synthetic peptide of human Vimentin
Format	Buffer System: 50mM Tris-Glycine(pH 7.4), 0.15M NaCl, 40% Glycerol, 0.01% Sodium azide and 0.05% BSA Purification: Affinity Purified.
Storage	Shipped on wet ice. Store at -20°C. Stable for 24 months from date of receipt. Aliquoting is unnecessary for -20°C storage.
Precautions	Anti-Vimentin antibody [30L14K32] is for research use only and not for use in diagnostic or therapeutic procedures.

### Protein Information

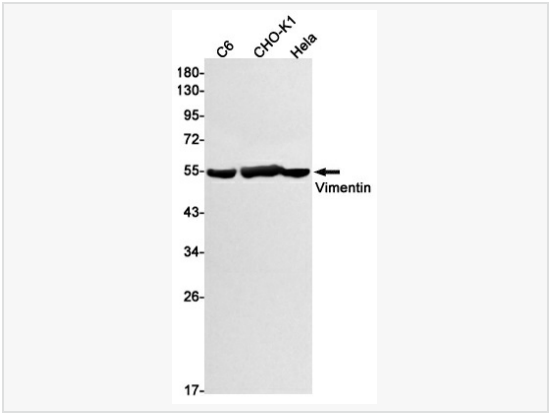
Synonyms	VIM, Vimentin.
Calculated MW	Calculated MW: 54 kDa; Observed MW: 54 kDa
Uniprot ID	P08670
Gene ID	7431
Background	Vimentin an intermediate filament protein. Intermediate filament proteins are expressed in a tissue-specific manner. Desmin is the subunit specific for muscle and vimentin the subunit specific for mesenchymal tissue.



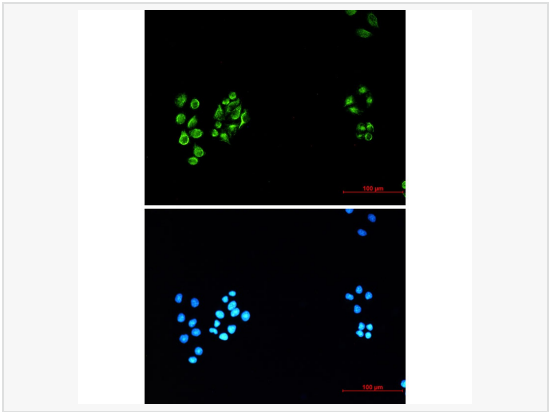
Immunohistochemistry analysis of paraffin-embedded Human tonsil using Vimentin antibody. High-pressure and temperature Sodium Citrate pH 6.0 was used for antigen retrieval.



Western blot analysis of Vimentin in 3T3 lysates using Vimentin antibody.



Western blot analysis of Vimentin in C6, CHO-K1, HeLa lysates using Vimentin antibody.



Immunocytochemistry analysis of Vimentin (green) in HeLa using Vimentin antibody and DAPI (blue) .