

Anti-TFII I Rabbit mAb

Purified Rabbit Monoclonal Antibody

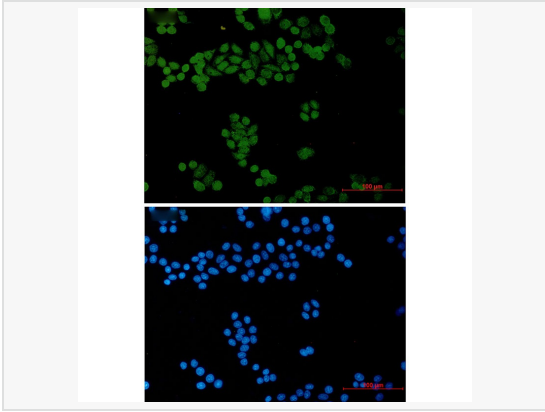
Catalog # R011863

Product Information

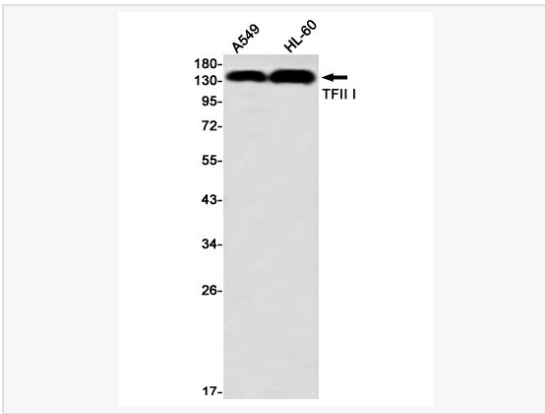
Application	WB, IHC-F/IF (Tissue-F), IHC-P/IF (Tissue-P), ICC/IF (Cell), ELISA
Reactivity	Human
Dilution	WB 1:500~1:1,000; IHC-P 1:50~1:100; IF 1:50~1:200
Host	Rabbit
Clonality	Monoclonal
Clone No.	66M61K15
Isotype	IgG
Label	Unconjugated
Immunogen	A synthetic peptide of human TFII I
Format	Buffer System: 50mM Tris-Glycine(pH 7.4), 0.15M NaCl, 40% Glycerol, 0.01% Sodium azide and 0.05% BSA Purification: Affinity Purified.
Storage	Shipped on wet ice. Store at -20°C. Stable for 24 months from date of receipt. Aliquoting is unnecessary for -20°C storage.
Precautions	Anti-TFII I Rabbit mAb [66M61K15] is for research use only and not for use in diagnostic or therapeutic procedures.

Protein Information

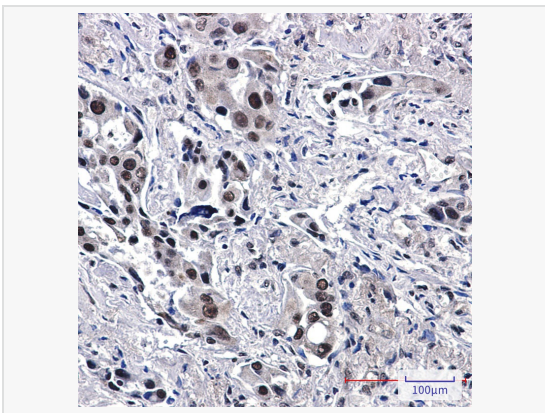
Synonyms	GTF2I, BAP135, WBSCR6, General transcription factor II-I, GTFII-I, TFII-I, Bruton tyrosine kinase-associated protein 135, BAP-135, BTK-associated protein 135, SRF-Phox1-interacting protein, SPIN, Williams-Beuren syndrome chromosomal region.
Calculated MW	Calculated MW: 112 kDa; Observed MW: 135,138 kDa
Uniprot ID	P78347
Gene ID	2969
Background	Interacts with the basal transcription machinery by coordinating the formation of a multiprotein complex at the C-FOS promoter, and linking specific signal responsive activator complexes.



Immunocytochemistry analysis of TFII I (green) in HeLa using R011863 and DAPI (blue) .



Western blot analysis of TFII I in A549, HL-60 lysates using TFII I antibody.



Immunohistochemistry analysis of paraffin-embedded Human lung cancer tissue using TFII I antibody. High-pressure and temperature Sodium Citrate pH 6.0 was used for antigen retrieval.