

Anti-Ras Rabbit mAb

Purified Rabbit Monoclonal Antibody

Catalog # R011995

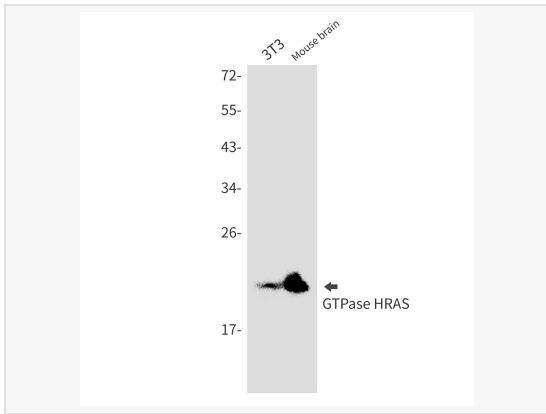
Product Information

Application	ELISA, WB, IP
Reactivity	Human, Mouse, Rat, Hamster
Dilution	WB 1:500~1:1,000; IP 1:20
Host	Rabbit
Clonality	Monoclonal
Clone No.	76K68L14
Isotype	IgG
Label	Unconjugated
Immunogen	A synthetic peptide of human Ras
Format	Buffer System: 50mM Tris-Glycine(pH 7.4), 0.15M NaCl, 40% Glycerol, 0.01% Sodium azide and 0.05% BSA Purification: Affinity Purified.
Storage	Shipped on wet ice. Store at -20°C. Stable for 24 months from date of receipt. Aliquoting is unnecessary for -20°C storage.
Precautions	Anti-Ras antibody [76K68L14] is for research use only and not for use in diagnostic or therapeutic procedures.

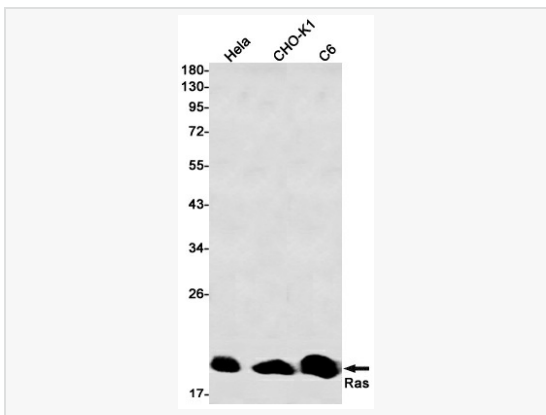
Protein Information

Synonyms	NS6, CMNS, NCMS, ALPS4, N-ras, NRAS1.
Calculated MW	Calculated MW: 21 kDa; Observed MW: 21 kDa
Uniprot ID	P01111
Gene ID	4893
Background	Ras proteins bind GDP/GTP and possess intrinsic GTPase activity. Miscellaneous Mutations which change AA 12, 13 or 61 activate the potential of Ras to transform cultured cells and are implicated in a variety of human tumors.

Validation Images



Western blot analysis of GTPase HRAS in 3T3, mouse brain lysates using GTPase HRAS antibody.



Western blot analysis of Ras in HeLa, CHO-K1, C6 lysates using Ras antibody.