

Anti-P2Y12 Rabbit mAb

Purified Recombinant Rabbit Monoclonal Antibody

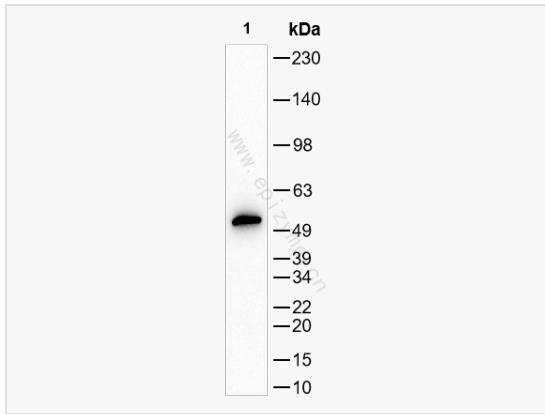
Catalog # R010899

Product Information

Application	WB, ELISA
Reactivity	Human
Dilution	WB 1:1,000~1:2,000
Host	Rabbit
Clonality	Monoclonal
Clone No.	63M57M22
Isotype	IgG
Label	Unconjugated
Immunogen	A synthesized peptide derived from human P2Y12
Format	Affinity purified monoclonal antibody supplied in PBS with 0.02% sodium azide and 50% glycerol, pH 7.3.
Storage	Shipped on wet ice. Store at -20°C. Stable for 24 months from date of receipt. Aliquoting is unnecessary for -20°C storage.
Precautions	Anti-P2Y12 Rabbit mAb [63M57M22] is for research use only and not for use in diagnostic or therapeutic procedures.

Protein Information

Synonyms	ADPG-R; BDPLT8; HORK3; P2T(AC); P2Y(12)R; P2Y(AC); P2Y(ADP); P2Y(cyc); P2Y12; SP1999; P2Y12_HUMAN; P2RY12; ADP-glucose receptor (ADPG-R); P2Y12 platelet ADP receptor (P2Y(ADP)).
Calculated MW	Calculated MW: 40 kDa; Observed MW: 52 kDa
Uniprot ID	Q9H244
Gene ID	64805
Background	The product of this gene belongs to the family of G-protein coupled receptors. This family has several receptor subtypes with different pharmacological selectivity, which overlaps in some cases, for various adenosine and uridine nucleotides. This receptor is involved in platelet aggregation, and is a potential target for the treatment of thromboembolisms and other clotting disorders. Mutations in this gene are implicated in bleeding disorder, platelet type 8 (BDPLT8). Alternative splicing results in multiple transcript variants of this gene. [provided by RefSeq, Jul 2013]
Cellular Location	Cell membrane Multi-pass membrane protein
Tissue Location	Highly expressed in the platelets, lower levels in the brain. Lowest levels in the lung, appendix, pituitary and adrenal gland. Expressed in the spinal cord and in the fetal brain.



Western Blot - Anti-P2Y12 Rabbit mAb [63M57M22]

All lanes: R010899 at 1:1,000 dilution

Lane 1: THP-1 (Human monocytic leukemia cell) whole cell lysates

Lysates/proteins at 10 μ g per lane.

Secondary antibody: Goat Anti-Rabbit IgG (H+L), HRP Conjugated (Cat. No. LF102) at 1:5,000 dilution

Predicted band size: 40 kDa

Observed band size: 52 kDa

Developed using the ECL technique (Cat. No. SQ201).