

## Anti-NEK2 Rabbit mAb

Purified Rabbit Monoclonal Antibody

Catalog # R010427

### Product Information

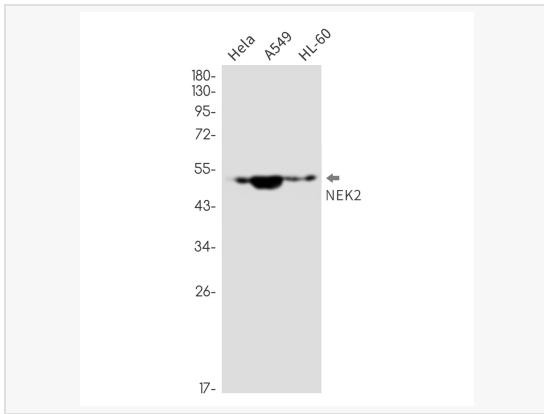
Application	WB, ELISA
Reactivity	Human
Dilution	WB 1:500~1:1,000
Host	Rabbit
Clonality	Monoclonal
Clone No.	71M55K78
Isotype	IgG
Label	Unconjugated
Immunogen	A synthetic peptide of human NEK2
Format	Buffer System: 50mM Tris-Glycine(pH 7.4), 0.15M NaCl, 40% Glycerol, 0.01% Sodium azide and 0.05% BSA Purification: Affinity Purified.
Storage	Shipped on wet ice. Store at -20°C. Stable for 24 months from date of receipt. Aliquoting is unnecessary for -20°C storage.
Precautions	Anti-NEK2 antibody [71M55K78] is for research use only and not for use in diagnostic or therapeutic procedures.

### Protein Information

Synonyms	HsPK21, NEK2, NEK2A, NLK1.
Calculated MW	Calculated MW: 52 kDa; Observed MW: 52 kDa
Uniprot ID	P51955
Gene ID	4751
Background	Protein kinase that is involved in mitotic regulation. Integral component of the mitotic spindle-assembly checkpoint which is necessary for proper chromosome segregation during metaphase-anaphase transition. Required for association of MAD2L1 to kinetochore.

## Validation Images

---



Western blot analysis of NEK2 in HeLa, A549, HL-60 lysates using NEK2 antibody.