

Anti-LINE 1 ORF1p Rabbit mAb

Purified Recombinant Rabbit Monoclonal Antibody

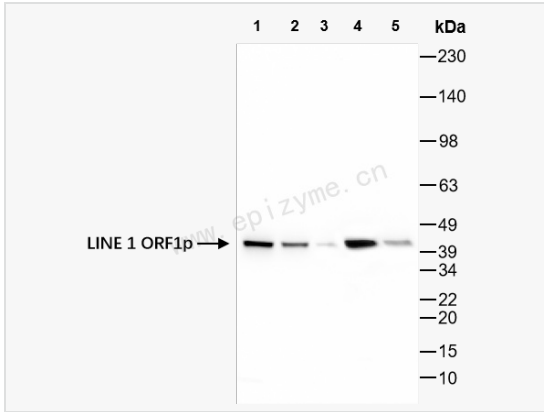
Catalog # R011218

Product Information

Application	WB, IHC-P/IF (Tissue-P), IF (Cell)/ICC, ELISA
Reactivity	Human
Dilution	WB 1:1,000~1:2,000; IHC-P 1:100~1:200; IF 1:100~1:200
Host	Rabbit
Clonality	Monoclonal
Clone No.	75K85K22
Isotype	IgG
Label	Unconjugated
Immunogen	Recombinant protein of human LINE-1 ORF1p
Format	Affinity purified monoclonal antibody supplied in PBS with 0.02% sodium azide and 50% glycerol, pH 7.3.
Storage	Shipped on wet ice. Store at -20°C. Stable for 24 months from date of receipt. Aliquoting is unnecessary for -20°C storage.
Precautions	Anti-LINE 1 ORF1p Rabbit mAb [75K85K22] is for research use only and not for use in diagnostic or therapeutic procedures.

Protein Information

Synonyms	L1ORF1p; L1RE1; LINE retrotransposable element 1; LINE-1 retrotransposable element ORF1 protein; LINE1 retrotransposable element 1; LRE1; LINE 1 ORF1p.
Calculated MW	Calculated MW: 40 kDa; Observed MW: 40 kDa
Uniprot ID	Q15605
Gene ID	4029
Background	Nucleic acid-binding protein which is essential for retrotransposition of LINE-1 elements in the genome. Functions as a nucleic acid chaperone binding its own transcript and therefore preferentially mobilizing the transcript from which they are encoded.



Western Blot - Anti-LINE 1 ORF1p Rabbit mAb [75K85K22]

All lanes: R011218 at 1:1,000 dilution

Lane 1: HeLa (Human cervix adenocarcinoma epithelial cell) whole cell lysates

Lane 2: HepG2 (Human hepatocarcinoma epithelial cell) whole cell lysates

Lane 3: HCT116 (Human colorectal carcinoma epithelial cell) whole cell lysates

Lane 4: 293T (Human embryonic kidney cell) whole cell lysates

Lane 5: K562 (Human chronic myeloid leukemia cell) whole cell lysates

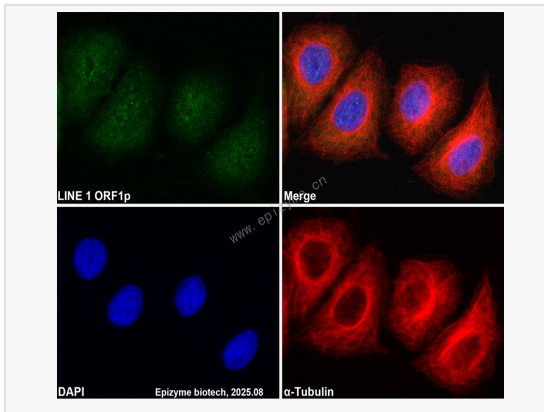
Lysates/proteins at 10 µg per lane.

Secondary antibody: Goat Anti-Rabbit IgG (H+L), HRP Conjugated (Cat. No. LF102) at 1:5,000 dilution

Predicted band size: 40 kDa

Observed band size: 40 kDa

Developed using the ECL technique (Cat. No. SQ201).



Immunofluorescence - Anti-LINE 1 ORF1p Rabbit mAb [75K85K22]

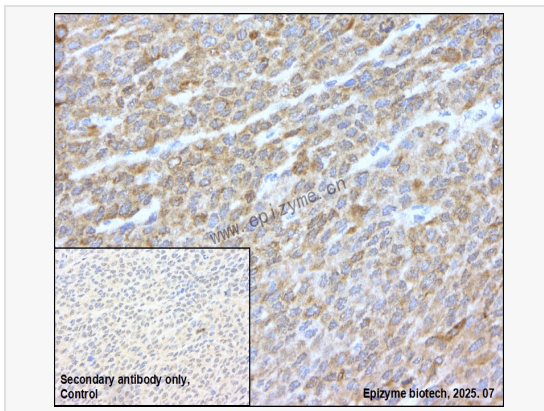
Sample: HeLa cells

The cells were fixed with 4% paraformaldehyde (10 min), permeabilized with 0.5% Triton X-100 for 10 minutes and then blocked with 5% BSA in 0.1% PBS-Tween for 0.5 hours.

Primary antibodies: R011218 at 1:100 dilution and alpha-tubulin Mouse Monoclonal Antibody (Cat. No. LF209) at 1:100 dilution

Secondary antibodies: Goat anti-Rabbit (488) at 1:1,000 dilution (shown in green) and Goat anti-Mouse (555) at 1:1,000 dilution (shown in red)

Nuclei were stained with DAPI (shown in blue).



Immunohistochemistry - Anti-LINE 1 ORF1p Rabbit mAb [75K85K22]

Sample: Paraformaldehyde-fixed, paraffin embedded human hepatoma tissue

Heat mediated antigen retrieval with Tris-EDTA buffer (pH 9.0) for 30 mins.

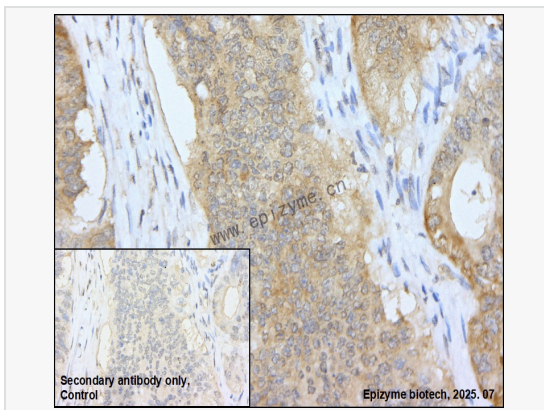
Primary antibody: R011218 at 1:200 dilution

Secondary antibody: Goat Anti-Rabbit IgG (H+L), HRP conjugated at 1:1,000 dilution DAB was used as the chromogen.

Counter stained with hematoxylin.

Positive/negative staining were presented.

Only the secondary antibody was used as the negative control.



Immunohistochemistry - Anti-LINE 1 ORF1p Rabbit mAb [75K85K22]

Sample: Paraformaldehyde-fixed, paraffin embedded human colonic cancer tissue

Heat mediated antigen retrieval with Tris-EDTA buffer (pH 9.0) for 30 mins.

Primary antibody: R011218 at 1:200 dilution

Secondary antibody: Goat Anti-Rabbit IgG (H+L), HRP conjugated at 1:1,000 dilution DAB was used as the chromogen.

Counter stained with hematoxylin.

Positive/negative staining were presented.

Only the secondary antibody was used as the negative control.