

Anti-HJURP Rabbit mAb

Purified Recombinant Rabbit Monoclonal Antibody

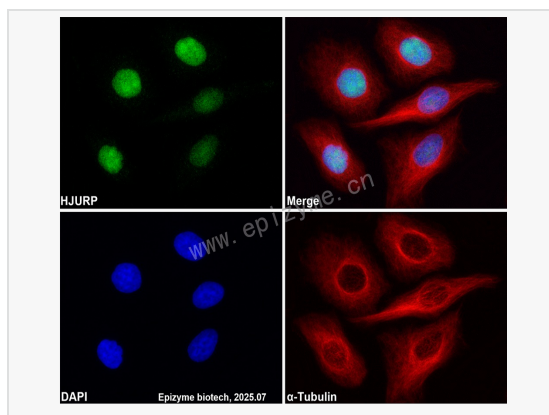
Catalog # R012115

Product Information

Application	WB, IF (Cell)/ICC, ELISA
Reactivity	Human
Dilution	WB 1:1,000~1:2,000; IF 1:100~1:200
Host	Rabbit
Clonality	Monoclonal
Clone No.	66L35M45
Isotype	IgG
Label	Unconjugated
Immunogen	Recombinant protein of human HJURP
Format	Affinity purified monoclonal antibody supplied in PBS with 0.01% sodium azide and 50% glycerol, pH 7.3.
Storage	Shipped on wet ice. Store at -20°C. Stable for 24 months from date of receipt. Aliquoting is unnecessary for -20°C storage.
Precautions	Anti-HJURP Rabbit mAb [66L35M45] is for research use only and not for use in diagnostic or therapeutic procedures.

Protein Information

Synonyms	14-3-3-associated AKT substrate; FAKTS; fetal liver expressing gene 1; Fetal liver-expressing gene 1 protein; FLEG1; hFLEG1; HJURP; Holliday junction recognition protein; Up-regulated in lung cancer 9; URLC9.
Calculated MW	Calculated MW: 84 kDa; Observed MW: 84 kDa
Uniprot ID	Q8NCD3
Gene ID	55355
Background	Centromeric protein that plays a central role in the incorporation and maintenance of histone H3-like variant CENPA at centromeres
Cellular Location	Nucleus; nucleolus. Centromere. Note: Localizes in centromeres during late telophase and early G1, when CENPA nucleosomes are assembled. Localizes to nucleolus during S phase, nucleolus site being often related to storage.



Immunofluorescence - Anti-HJURP Rabbit mAb [66L35M45]

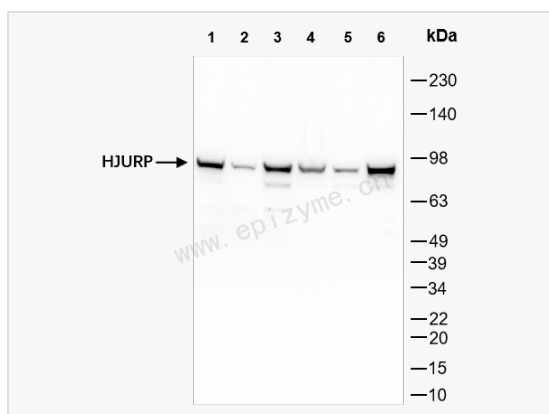
Sample: HeLa cells

The cells were fixed with 4% paraformaldehyde (10 min), permeabilized with 0.5% Triton X-100 for 10 minutes and then blocked with 5% BSA in 0.1% PBS-Tween for 0.5 hours.

Primary antibodies: R012115 at 1:100 dilution and α -tubulin Mouse Monoclonal Antibody (Cat. No. LF209) at 1:100 dilution

Secondary antibodies: Goat anti-Rabbit (488) at 1:1,000 dilution (shown in green) and Goat anti-Mouse (555) at 1:1,000 dilution (shown in red)

Nuclei were stained with DAPI (shown in blue).



Western Blot - Anti-HJURP Rabbit mAb [66L35M45]

All lanes: R012115 at 1:1,000 dilution

Lane 1: HeLa (Human cervix adenocarcinoma epithelial cell) whole cell lysates

Lane 2: Huh1 (Human hepatocarcinoma epithelial cell) whole cell lysates

Lane 3: HepG2 (Human hepatocarcinoma epithelial cell) whole cell lysates

Lane 4: 293T (Human embryonic kidney cell) whole cell lysates

Lane 5: U87 (Human malignant glioblastoma epithelial cells) whole cell lysates

Lane 6: SH-SY5Y (Human neuroblastoma epithelial cell) whole cell lysates

Lysates/proteins at 10 μ g per lane.

Secondary antibody: Goat Anti-Rabbit IgG (H+L), HRP Conjugated (Cat. No. LF102) at 1:5,000 dilution

Predicted band size: 84 kDa

Observed band size: 84 kDa

Developed using the ECL technique (Cat. No. SQ201).