

## Anti-A RAF Rabbit mAb

Purified Recombinant Rabbit Monoclonal Antibody

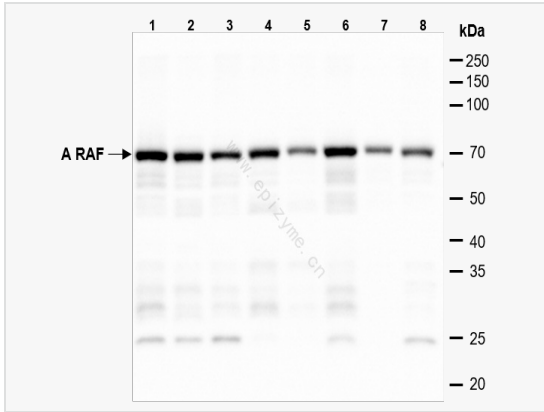
Catalog # R012729

### Product Information

Application	IHC-P/IF (Tissue-P), IF (Cell)/ICC, ELISA, WB
Reactivity	Human
Dilution	WB 1:1,000~1:2,000; IHC-P 1:200; IF 1:100
Host	Rabbit
Clonality	Monoclonal
Clone No.	57L82M51
Isotype	IgG
Label	Unconjugated
Immunogen	Recombinant protein of human A RAF
Format	Affinity purified monoclonal antibody supplied in PBS with 0.01% sodium azide and 50% glycerol, pH 7.3.
Storage	Shipped on wet ice. Store at -20°C. Stable for 24 months from date of receipt. Aliquoting is unnecessary for -20°C storage.
Precautions	Anti-A RAF Rabbit mAb [57L82M51] is for research use only and not for use in diagnostic or therapeutic procedures.

### Protein Information

Synonyms	ARAF, ARAF1, PKS, PKS2, Serine/threonine-protein kinase A-Raf, Proto-oncogene A-Raf, Proto-oncogene A-Raf-1, Proto-oncogene Pks.
Calculated MW	Calculated MW: 68 kDa; Observed MW: 68 kDa
Uniprot ID	P10398
Gene ID	369
Background	Involved in the transduction of mitogenic signals from the cell membrane to the nucleus. May also regulate the TOR signaling cascade.



Western Blot - Anti-A RAF Rabbit mAb [57L82M51]

All lanes: R012729 at 1:1,000 dilution

Lane 1: HeLa (human cervix adenocarcinoma epithelial cell) whole cell lysates

Lane 2: Jurkat (human T lymphocytic leukemia cell) whole cell lysates

Lane 3: HCT116 (human colorectal carcinoma epithelial cell) whole cell lysates

Lane 4: SCC-9 (human tongue squamous carcinoma epithelial cell) whole cell lysates

Lane 5: U2OS (human osteosarcoma epithelial cell) whole cell lysates

Lane 6: SW620 (human colorectal carcinoma epithelial cell) whole cell lysates

Lane 7: 293T (human embryonic kidney cell) whole cell lysates

Lane 8: HepG2 (human hepatocellular carcinoma epithelial cell) whole cell lysates

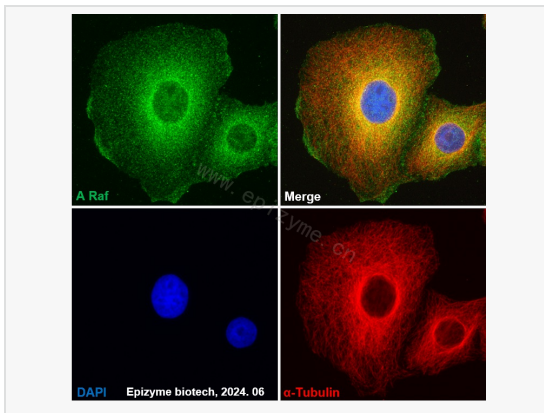
Lysates/proteins at 10 µg per lane.

Secondary antibody: Goat Anti-Rabbit IgG(H+L), HRP Conjugated (Cat. No. LF102) at 1:5,000 dilution

Predicted band size: 68 kDa

Observed band size: 68 kDa

Developed using the ECL technique (Cat. No. SQ201).



Immunofluorescence - Anti-A RAF Rabbit mAb [57L82M51]

Sample: HeLa cells

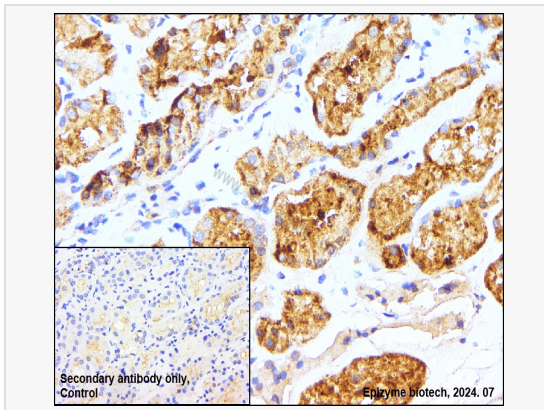
The cells were fixed with 4% paraformaldehyde (10 min), permeabilized with 0.5% Triton X-100 for 10 minutes and then blocked with 5% BSA in 0.1% PBS-Tween for 0.5 hours.

Primary antibodies: R012729 at 1:100 dilution and  $\alpha$ -tubulin Mouse Monoclonal

Antibody (Cat. No. LF209) at 1:100 dilution

Secondary antibodies: Goat anti-Rabbit (488) at 1:1,000 dilution (shown in green) and Goat anti-Mouse (555) at 1:1,000 dilution (shown in red)

Nuclei were stained with DAPI (shown in blue).



Immunohistochemistry - Anti-A RAF Rabbit mAb [57L82M51]

Sample: Paraformaldehyde-fixed, paraffin embedded human renal carcinoma tissue

Heat mediated antigen retrieval with Tris-EDTA buffer (pH 9.0) for 30 mins.

Primary antibody: R012729 at 1:200 dilution

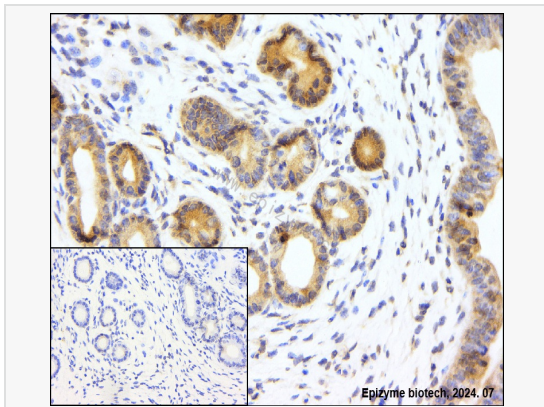
Secondary antibody: Goat Anti-Rabbit IgG (H+L), HRP conjugated at 1:1,000 dilution

DAB was used as the chromogen.

Counter stained with hematoxylin.

Positive/negative staining were presented.

Only the secondary antibody was used as the negative control.



Immunohistochemistry - Anti-A RAF Rabbit mAb [57L82M51]

Sample: Paraformaldehyde-fixed, paraffin embedded mouse uterus tissue

Heat mediated antigen retrieval with Tris-EDTA buffer (pH 9.0) for 30 mins.

Primary antibody: R012729 at 1:200 dilution

Secondary antibody: Goat Anti-Rabbit IgG (H+L), HRP conjugated at 1:1,000 dilution

DAB was used as the chromogen.

Counter stained with hematoxylin.

Positive/negative staining were presented.

Only the secondary antibody was used as the negative control.