

Anti-Phospho-EGFR (Tyr1173) Rabbit mAb

Purified Rabbit Monoclonal Antibody

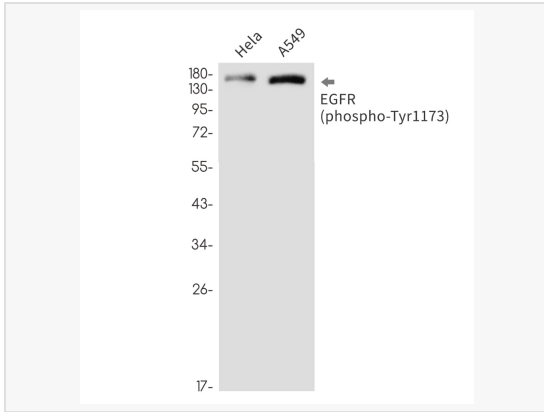
Catalog # R011060

Product Information

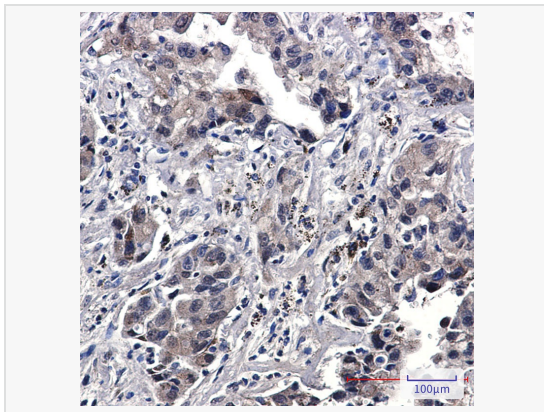
Application	ELISA, WB, IHC-F/IF (Tissue-F), IHC-P/IF (Tissue-P), ICC/IF (Cell), IP
Reactivity	Human
Dilution	WB 1:500~1:1,000; IHC-P 1:50~1:100; IF 1:50~1:200; IP 1:20
Host	Rabbit
Clonality	Monoclonal
Clone No.	62L64M68
Isotype	IgG
Label	Unconjugated
Immunogen	A synthetic phosphopeptide corresponding to residues surrounding Tyr1173 of human EGFR
Format	Buffer System: 50mM Tris-Glycine(pH 7.4), 0.15M NaCl, 40% Glycerol, 0.01% Sodium azide and 0.05% BSA Purification: Affinity Purified.
Storage	Shipped on wet ice. Store at -20°C. Stable for 24 months from date of receipt. Aliquoting is unnecessary for -20°C storage.
Precautions	Anti-Phospho-EGFR (Tyr1173) antibody [62L64M68] is for research use only and not for use in diagnostic or therapeutic procedures.

Protein Information

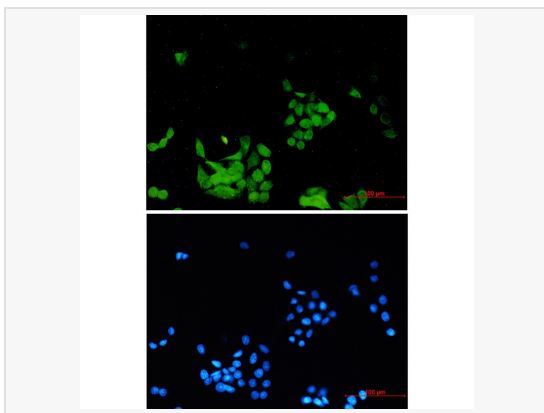
Synonyms	EGFR, ERBB, ERBB1, HER1, Epidermal growth factor receptor, Proto-oncogene c-ErbB-1, Receptor tyrosine-protein kinase erbB-1.
Calculated MW	Calculated MW: 134 kDa; Observed MW: 175 kDa
Uniprot ID	P00533
Gene ID	1956
Background	EGFR is a receptor tyrosine kinase. Receptor for epidermal growth factor (EGF) and related growth factors including TGF-alpha, amphiregulin, betacellulin, heparin-binding EGF-like growth factor, GP30 and vaccinia virus growth factor. Is involved in the control of cell growth and differentiation. . A single-pass transmembrane tyrosine kinase. Ligand binding to this receptor results in receptor dimerization, autophosphorylation (in trans), activation of various downstream signaling molecules and lysosomal degradation.



Western blot analysis of Phospho-EGFR (Tyr1173) in HeLa, A549 lysates using Phospho-EGFR (Tyr1173) antibody.



Immunohistochemistry analysis of paraffin-embedded Human lung cancer using EGFR (Phospho-Tyr1173) antibody. High-pressure and temperature Sodium Citrate pH 6.0 was used for antigen retrieval.



Immunocytochemistry analysis of Phospho-EGFR (Tyr1173) (green) in HeLa using Phospho-EGFR (Tyr1173) antibody and DAPI (blue)