

Anti-PCGF6 Rabbit mAb

Purified Recombinant Rabbit Monoclonal Antibody

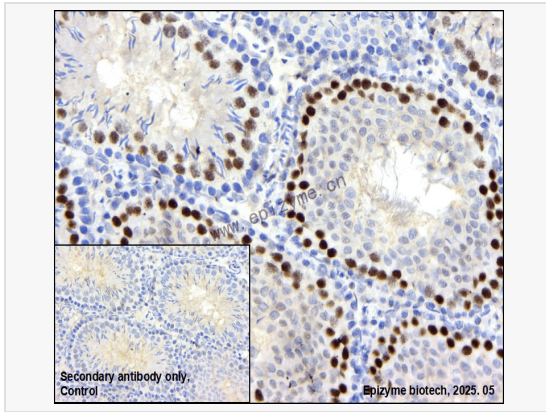
Catalog # R010989

Product Information

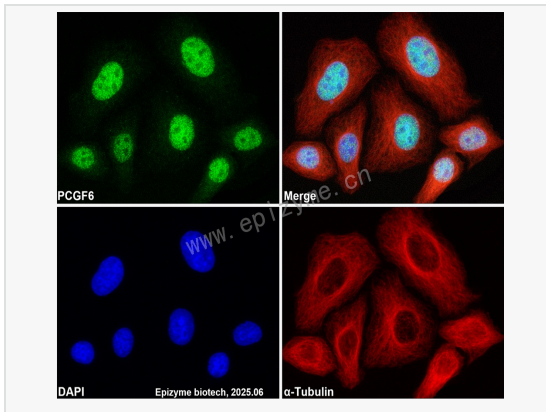
| | |
|-------------|-----------------------------------------------------------------------------------------------------------------------------|
| Application | WB, IHC-P/IF (Tissue-P), IF (Cell)/ICC, ELISA |
| Reactivity | Human, Mouse, Rat |
| Dilution | WB 1:1,000~1:2,000; IHC-P 1:100~1:200; IF 1:100~1:200 |
| Host | Rabbit |
| Clonality | Monoclonal |
| Clone No. | 67L28M77 |
| Isotype | IgG |
| Label | Unconjugated |
| Immunogen | Recombinant protein of mouse PCGF6 |
| Format | Affinity purified monoclonal antibody supplied in PBS with 0.01% sodium azide and 50% glycerol, pH 7.3. |
| Storage | Shipped on wet ice. Store at -20°C. Stable for 24 months from date of receipt. Aliquoting is unnecessary for -20°C storage. |
| Precautions | Anti-PCGF6 Rabbit mAb [67L28M77] is for research use only and not for use in diagnostic or therapeutic procedures. |

Protein Information

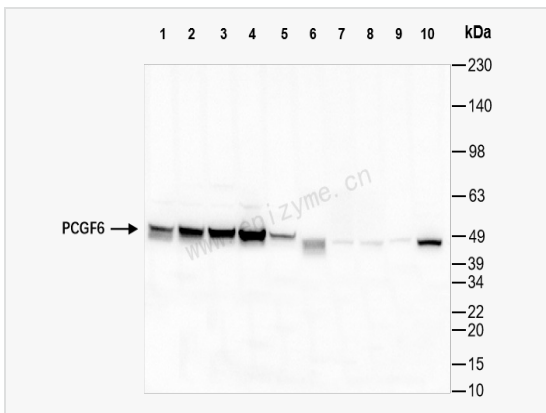
| | |
|-------------------|-------------------------------------------------------------------------------------------------------------------------------------------------------------------------------------------------------------------------------------------------------------------------------------------------------------------------------------------------------------------------------------------------------------------------------------------------------------------------------------------------------------------------------------------------------------------------------------------------------|
| Synonyms | MBLR; Mel18 and Bmi1 like RING finger protein; Mel18 and Bmi1-like RING finger; Pcgf6; PCGF6_HUMAN; Polycomb group RING finger protein 6; RING finger protein 134; RNF134. |
| Calculated MW | Calculated MW: 40 kDa; Observed MW: 40-50 kDa |
| Uniprot ID | Q99NA9 |
| Gene ID | 71041 |
| Background | Transcriptional repressor. May modulate the levels of histone H3K4Me3 by activating KDM5D histone demethylase. Component of a Polycomb group (PcG) multiprotein PRC1-like complex, a complex class required to maintain the transcriptionally repressive state of many genes, including Hox genes, throughout development. PcG PRC1 complex acts via chromatin remodeling and modification of histones; it mediates monoubiquitination of histone H2A 'Lys-119', rendering chromatin heritably changed in its expressibility. Within the PRC1-like complex, regulates RNF2 ubiquitin ligase activity. |
| Cellular Location | Nucleus. |
| Tissue Location | Ubiquitous. |



Immunohistochemistry - Anti-PCGF6 Rabbit mAb [67L28M77]
 Sample: Paraformaldehyde-fixed, paraffin embedded rat testis tissue
 Heat mediated antigen retrieval with Tris-EDTA buffer (pH 9.0) for 30 mins.
 Primary antibody: R010989 at 1:200 dilution
 Secondary antibody: Goat Anti-Rabbit IgG (H+L), HRP conjugated at 1:1,000 dilution
 DAB was used as the chromogen.
 Counter stained with hematoxylin.
 Positive/negative staining were presented.
 Only the secondary antibody was used as the negative control.



Immunofluorescence - Anti-PCGF6 Rabbit mAb [67L28M77]
 Sample: HeLa cells
 The cells were fixed with 4% paraformaldehyde (10 min), permeabilized with 0.5% Triton X-100 for 10 minutes and then blocked with 5% BSA in 0.1% PBS-Tween for 0.5 hours.
 Primary antibodies: R010989 at 1:100 dilution and α -tubulin Mouse Monoclonal Antibody (Cat. No. LF209) at 1:100 dilution
 Secondary antibodies: Goat anti-Rabbit (488) at 1:1,000 dilution (shown in green) and Goat anti-Mouse (555) at 1:1,000 dilution (shown in red)
 Nuclei were stained with DAPI (shown in blue).



Western Blot - Anti-PCGF6 Rabbit mAb [67L28M77]
 All lanes: R010989 at 1:1,000 dilution
 Lane 1: HeLa (Human cervix adenocarcinoma epithelial cell) whole cell lysates
 Lane 2: Huh1 (Human hepatocarcinoma epithelial cell) whole cell lysates
 Lane 3: HepG2 (Human hepatocarcinoma epithelial cell) whole cell lysates
 Lane 4: 293T (Human embryonic kidney cell) whole cell lysates
 Lane 5: U87 (Human malignant glioblastoma epithelial cells) whole cell lysates
 Lane 6: Raw264.7 (Mouse mononuclear macrophage leukemia cell) whole cell lysates
 Lane 7: Mouse heart whole tissue lysates
 Lane 8: Mouse liver whole tissue lysates
 Lane 9: Mouse brain whole tissue lysates
 Lane 10: PC-12 (Rat adrenal pheochromocytoma epithelial cell) whole cell lysates
 Lysates/proteins at 10 μ g per lane.
 Secondary antibody: Goat Anti-Rabbit IgG (H+L), HRP Conjugated (Cat. No. LF102) at 1:5,000 dilution
 Predicted band size: 40 kDa
 Observed band size: 40-50 kDa
 Developed using the ECL technique (Cat. No. SQ201).