

## Anti-MIB1 Rabbit mAb

Purified Recombinant Rabbit Monoclonal Antibody

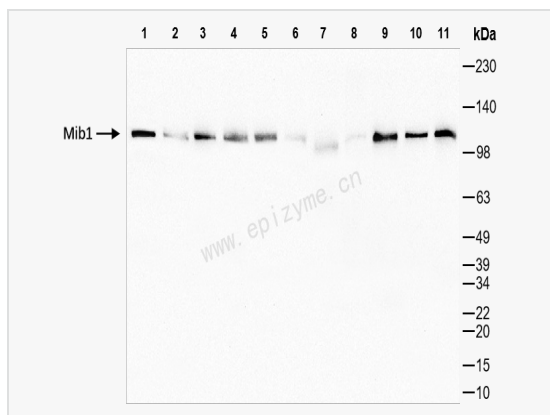
Catalog # R011726

### Product Information

Application	WB, IHC-P/IF (Tissue-P), ELISA
Reactivity	Human, Mouse, Rat
Dilution	WB 1:1,000~1:2,000; IHC-P 1:100~1:200; IF 1:100~1:200
Host	Rabbit
Clonality	Monoclonal
Clone No.	67K24L59
Isotype	IgG
Label	Unconjugated
Immunogen	A synthesized peptide derived from human Mib1
Format	Affinity purified monoclonal antibody supplied in PBS with 0.02% sodium azide and 50% glycerol, pH 7.3.
Storage	Shipped on wet ice. Store at -20°C. Stable for 24 months from date of receipt. Aliquoting is unnecessary for -20°C storage.
Precautions	Anti-MIB1 Rabbit mAb [67K24L59] is for research use only and not for use in diagnostic or therapeutic procedures.

### Protein Information

Synonyms	DAPK-interacting protein 1; Dip 1; DIP-1; Dip1; E3 ubiquitin protein ligase MIB 1; E3 ubiquitin protein ligase MIB1; E3 ubiquitin-protein ligase mib1; KIAA1323; LVNC7; MIB; mib1; MIB1_HUMAN; Mind bomb homolog 1; Mindbomb E3 ubiquitin protein ligase 1; Ubiquitin ligase mind bomb; Zinc finger ZZ type with ankyrin repeat domain protein 2; ZZANK2; ZZZ6; Mindbomb.
Calculated MW	Calculated MW: 110 kDa; Observed MW: 110 kDa
Uniprot ID	Q86YT6
Gene ID	57534
Background	This gene encodes a protein containing multiple ankyrin repeats and RING finger domains that functions as an E3 ubiquitin ligase. The encoded protein positively regulates Notch signaling by ubiquitinating the Notch receptors, thereby facilitating their endocytosis. This protein may also promote the ubiquitination and degradation of death-associated protein kinase 1 (DAPK1). [provided by RefSeq, Jun 2013]
Cellular Location	Cytoplasm. Cell membrane. Localizes to the plasma membrane (By similarity). According to PubMed:15048887, it is mitochondrial, however such localization remains unclear.
Tissue Location	Widely expressed at low level. Expressed at higher level in spinal cord, ovary, whole brain, and all specific brain regions examined.



Western Blot - Anti-MIB1 Rabbit mAb [67K24L59]

All lanes: R011726 at 1:1,000 dilution

Lane 1: HeLa (Human cervix adenocarcinoma epithelial cell) whole cell lysates

Lane 2: HepG2 (Human hepatocarcinoma epithelial cell) whole cell lysates

Lane 3: HCT116 (Human colorectal carcinoma epithelial cell) whole cell lysates

Lane 4: 293T (Human embryonic kidney cell) whole cell lysates

Lane 5: K562 (Human chronic myeloid leukemia cell) whole cell lysates

Lane 6: SH-SY5Y (Human neuroblastoma epithelial cell) whole cell lysates

Lane 7: C2C12 (Mouse myoblasts epithelial cell) whole cell lysates

Lane 8: Mouse heart whole tissue lysates

Lane 9: Mouse liver whole tissue lysates

Lane 10: PC-12 (Rat adrenal pheochromocytoma epithelial cell) whole cell lysates

Lane 11: Rat brain whole tissue lysates

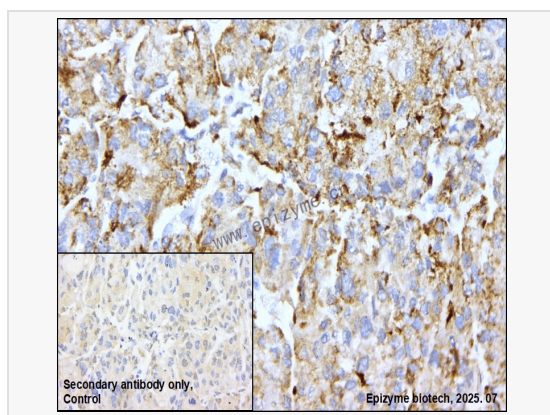
Lysates/proteins at 10 µg per lane.

Secondary antibody: Goat Anti-Rabbit IgG (H+L), HRP Conjugated (Cat. No. LF102) at 1:5,000 dilution

Predicted band size: 110 kDa

Observed band size: 110 kDa

Developed using the ECL technique (Cat. No. SQ201).



Immunohistochemistry - Anti-MIB1 Rabbit mAb [67K24L59]

Sample: Paraformaldehyde-fixed, paraffin embedded human ovarian cancer tissue

Heat mediated antigen retrieval with Tris-EDTA buffer (pH 9.0) for 30 mins.

Primary antibody: R011726 at 1:200 dilution

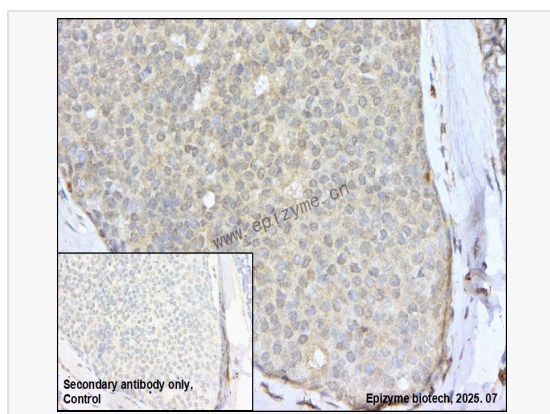
Secondary antibody: Goat Anti-Rabbit IgG (H+L), HRP conjugated at 1:1,000 dilution

DAB was used as the chromogen.

Counter stained with hematoxylin.

Positive/negative staining were presented.

Only the secondary antibody was used as the negative control.



Immunohistochemistry - Anti-MIB1 Rabbit mAb [67K24L59]

Sample: Paraformaldehyde-fixed, paraffin embedded human breast cancer tissue

Heat mediated antigen retrieval with Tris-EDTA buffer (pH 9.0) for 30 mins.

Primary antibody: R011726 at 1:200 dilution

Secondary antibody: Goat Anti-Rabbit IgG (H+L), HRP conjugated at 1:1,000 dilution

DAB was used as the chromogen.

Counter stained with hematoxylin.

Positive/negative staining were presented.

Only the secondary antibody was used as the negative control.