

## Anti-MetRS Rabbit mAb

Purified Recombinant Rabbit Monoclonal Antibody

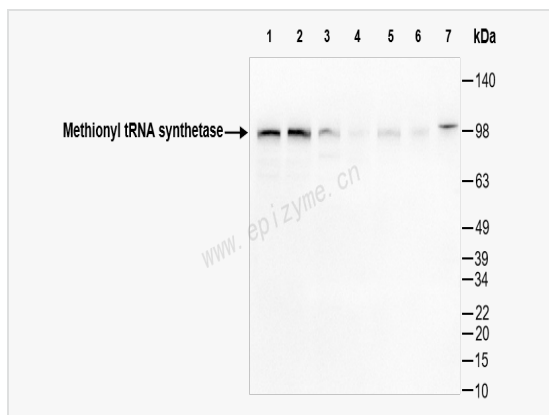
Catalog # R012541

### Product Information

Application	WB, IF (Cell)/ICC, ELISA
Reactivity	Human
Dilution	WB 1:1,000~1:2,000; IF 1:100~1:200
Host	Rabbit
Clonality	Monoclonal
Clone No.	63M16M17
Isotype	IgG
Label	Unconjugated
Immunogen	A synthesized peptide derived from human Methionyl tRNA synthetase
Format	Affinity purified monoclonal antibody supplied in PBS with 0.01% sodium azide and 50% glycerol, pH 7.3.
Storage	Shipped on wet ice. Store at -20°C. Stable for 24 months from date of receipt. Aliquoting is unnecessary for -20°C storage.
Precautions	Anti-MetRS Rabbit mAb [63M16M17] is for research use only and not for use in diagnostic or therapeutic procedures.

### Protein Information

Synonyms	cytoplasmic, FLJ35667, Mars, Methionine tRNA ligase 1, Methionine tRNA ligase 1 cytoplasmic, Methionine tRNA ligase, Methionine tRNA synthetase, Methionine--tRNA ligase, Methionyl tRNA synthetase cytoplasmic, Methionyl-tRNA synthetase, MetRS, MRS, MTRNS, SYMC_HUMAN.
Calculated MW	Calculated MW: 101 kDa; Observed MW: 101 kDa
Uniprot ID	P56192
Gene ID	4141
Background	This gene encodes a member of the class I family of aminoacyl-tRNA synthetases. These enzymes play a critical role in protein biosynthesis by charging tRNAs with their cognate amino acids. The encoded protein is a component of the multi-tRNA synthetase complex and catalyzes the ligation of methionine to tRNA molecules. [provided by RefSeq, Jan 2011]
Cellular Location	Cytoplasm.



Western Blot - Anti-MetRS Rabbit mAb [63M16M17]

All lanes: R012541 at 1:1,000 dilution

Lane 1: HeLa (Human cervix adenocarcinoma epithelial cell) whole cell lysates

Lane 2: HepG2 (Human hepatocarcinoma epithelial cell) whole cell lysates

Lane 3: HCT116 (Human colorectal carcinoma epithelial cell) whole cell lysates

Lane 4: U2OS (Human osteosarcoma epithelial cell) whole cell lysates

Lane 5: T24 (Human bladder cancer epithelial cell) whole cell lysates

Lane 6: Jurkat (Human T lymphocytic leukemia cell) whole cell lysates

Lane 7: 293T (Human embryonic kidney cell) whole cell lysates

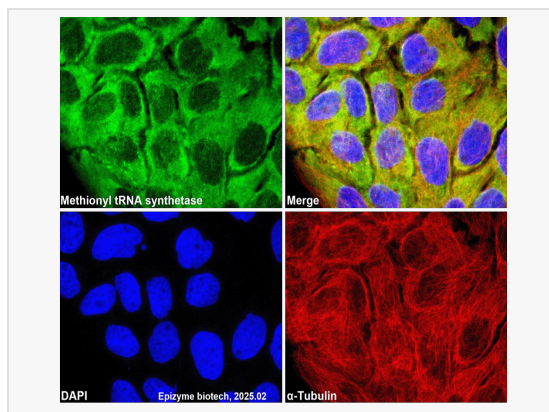
Lysates/proteins at 10 µg per lane.

Secondary antibody: Goat Anti-Rabbit IgG (H+L), HRP Conjugated (Cat. No. LF102) at 1:5,000 dilution

Predicted band size: 101 kDa

Observed band size: 101 kDa

Developed using the ECL technique (Cat. No. SQ201).



Immunofluorescence - Anti-MetRS Rabbit mAb [63M16M17]

Sample: A431 cells

The cells were fixed with 4% paraformaldehyde (10 min), permeabilized with 0.5% Triton X-100 for 10 minutes and then blocked with 5% BSA in 0.1% PBS-Tween for 0.5 hours.

Primary antibodies: R012541 at 1:100 dilution and  $\alpha$ -tubulin Mouse Monoclonal Antibody (Cat. No. LF209) at 1:100 dilution

Secondary antibodies: Goat anti-Rabbit (488) at 1:1,000 dilution (shown in green) and Goat anti-Mouse (555) at 1:1,000 dilution (shown in red)

Nuclei were stained with DAPI (shown in blue).