

Anti-KRIT1 Rabbit mAb

Purified Recombinant Rabbit Monoclonal Antibody

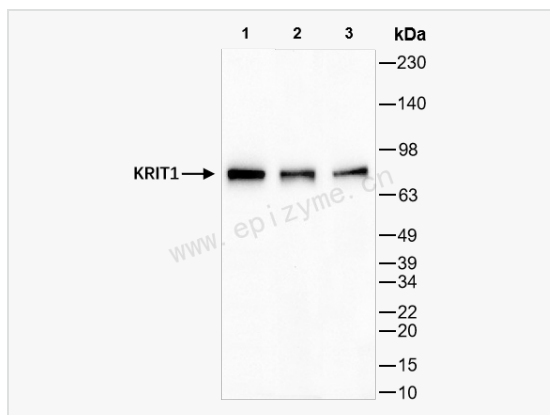
Catalog # R012537

Product Information

Application	WB, IHC-P/IF (Tissue-P), ELISA
Reactivity	Human, Rat
Dilution	WB 1:1,000~1:2,000; IHC-P 1:100~1:200; IF 1:100~1:200
Host	Rabbit
Clonality	Monoclonal
Clone No.	36M96K43
Isotype	IgG
Label	Unconjugated
Immunogen	Recombinant protein of human KRIT1
Format	Affinity purified monoclonal antibody supplied in PBS with 0.02% sodium azide and 50% glycerol, pH 7.3.
Storage	Shipped on wet ice. Store at -20°C. Stable for 24 months from date of receipt. Aliquoting is unnecessary for -20°C storage.
Precautions	Anti-KRIT1 Rabbit mAb [36M96K43] is for research use only and not for use in diagnostic or therapeutic procedures.

Protein Information

Synonyms	CCM1; KRIT1; Krev interaction trapped protein 1; Krev interaction trapped 1; Cerebral cavernous malformations 1 protein.
Calculated MW	Calculated MW: 84 kDa; Observed MW: 84 kDa
Uniprot ID	O00522
Gene ID	889
Background	This gene encodes a protein containing four ankyrin repeats, a band 4.1/ezrin/radixin/moesin (FERM) domain, and multiple NPXY sequences. The encoded protein is localized in the nucleus and cytoplasm. It binds to integrin cytoplasmic domain-associated protein-1 alpha (ICAP1alpha), and plays a critical role in beta1-integrin-mediated cell proliferation. It associates with junction proteins and RAS-related protein 1A (Rap1A), which requires the encoded protein for maintaining the integrity of endothelial junctions. It is also a microtubule-associated protein and may play a role in microtubule targeting. Mutations in this gene result in cerebral cavernous malformations. Multiple alternatively spliced transcript variants have been found for this gene. [provided by RefSeq, Sep 2009]
Cellular Location	Cytoplasm.Cytoskeleton.Cell membrane.Peripheral membrane protein.Cell junction.KRIT1 and CDH5 reciprocally regulate their localization to endothelial cell-cell junctions. Association with RAP1 relocalizes KRIT1 from microtubules to cell junction membranes. Translocates from the cytoplasm along microtubules to the cell membrane in a ITGB1BP1-dependent manner.
Tissue Location	Low levels in brain. Very weak expression found in heart and muscle.



Western Blot - Anti-KRIT1 Rabbit mAb [36M96K43]

All lanes: R012537 at 1:1,000 dilution

Lane 1: HeLa (Human cervix adenocarcinoma epithelial cell) whole cell lysates

Lane 2: SH-SY5Y (Human neuroblastoma epithelial cell) whole cell lysates

Lane 3: Rat brain whole tissue lysates

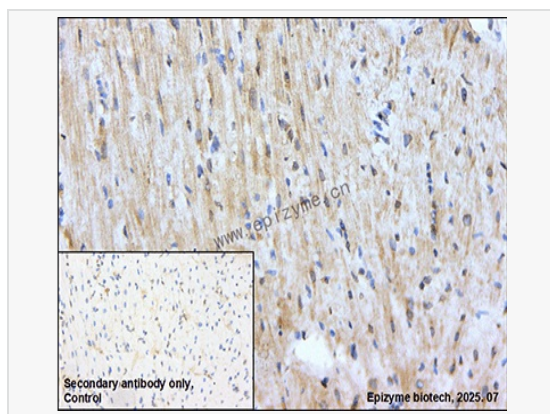
Lysates/proteins at 10 µg per lane.

Secondary antibody: Goat Anti-Rabbit IgG (H+L), HRP Conjugated (Cat. No. LF102) at 1:5,000 dilution

Predicted band size: 84 kDa

Observed band size: 84 kDa

Developed using the ECL technique (Cat. No. SQ201).



Immunohistochemistry - Anti-KRIT1 Rabbit mAb [36M96K43]

Sample: Paraformaldehyde-fixed, paraffin embedded rat heart tissue

Heat mediated antigen retrieval with Tris-EDTA buffer (pH 9.0) for 30 mins.

Primary antibody: R012537 at 1:200 dilution

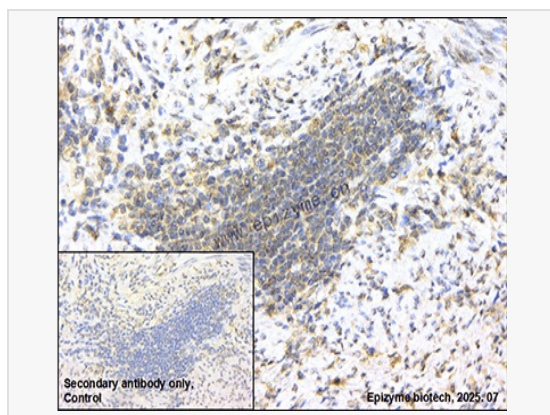
Secondary antibody: Goat Anti-Rabbit IgG (H+L), HRP conjugated at 1:1,000 dilution

DAB was used as the chromogen.

Counter stained with hematoxylin.

Positive/negative staining were presented.

Only the secondary antibody was used as the negative control.



Immunohistochemistry - Anti-KRIT1 Rabbit mAb [36M96K43]

Sample: Paraformaldehyde-fixed, paraffin embedded human endometrial carcinoma tissue

Heat mediated antigen retrieval with Tris-EDTA buffer (pH 9.0) for 30 mins.

Primary antibody: R012537 at 1:200 dilution

Secondary antibody: Goat Anti-Rabbit IgG (H+L), HRP conjugated at 1:1,000 dilution

DAB was used as the chromogen.

Counter stained with hematoxylin.

Positive/negative staining were presented.

Only the secondary antibody was used as the negative control.