

Anti-HAT1/KAT1 Rabbit mAb

Purified Rabbit Monoclonal Antibody

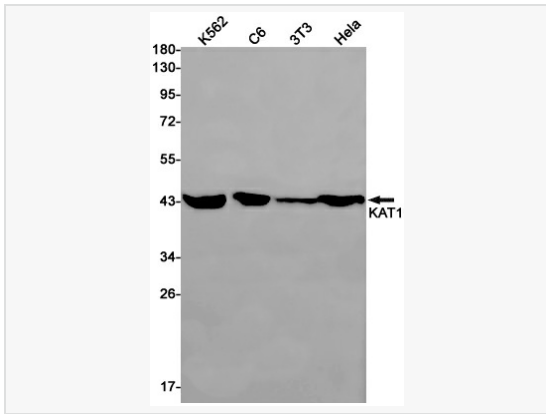
Catalog # R010791

Product Information

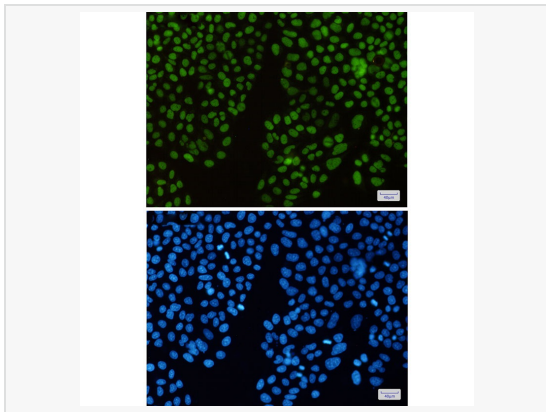
Application	WB, IHC-F/IF (Tissue-F), IHC-P/IF (Tissue-P), ICC/IF (Cell), IP, ELISA
Reactivity	Human, Mouse, Rat
Dilution	WB 1:500~1:1,000; IHC-P 1:50~1:100; IF 1:50~1:200; IP 1:20
Host	Rabbit
Clonality	Monoclonal
Clone No.	78L20L34
Isotype	IgG
Label	Unconjugated
Immunogen	Recombinant protein of human KAT1
Format	Buffer System: 50mM Tris-Glycine(pH 7.4), 0.15M NaCl, 40% Glycerol, 0.01% Sodium azide and 0.05% BSA Purification: Affinity Purified.
Storage	Shipped on wet ice. Store at -20°C. Stable for 24 months from date of receipt. Aliquoting is unnecessary for -20°C storage.
Precautions	Anti-HAT1/KAT1 Rabbit antibody [78L20L34] is for research use only and not for use in diagnostic or therapeutic procedures.

Protein Information

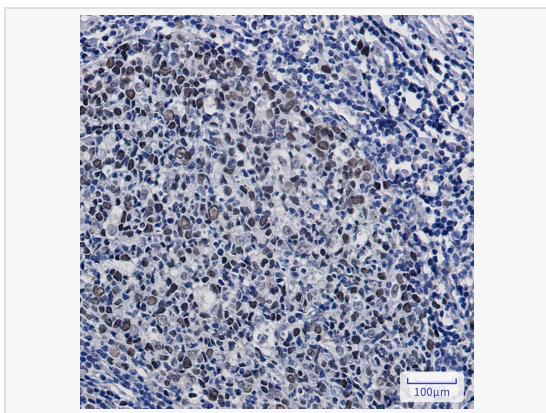
Synonyms	hat1, KAT1.
Calculated MW	Calculated MW: 50 kDa; Observed MW: 45 kDa
Uniprot ID	O14929
Gene ID	8520
Background	Acetylates soluble but not nucleosomal histone H4 at 'Lys-5' (H4K5ac) and 'Lys-12' (H4K12ac) and, to a lesser extent, acetylates histone H2A at 'Lys-5' (H2AK5ac). Has intrinsic substrate specificity that modifies lysine in recognition sequence GXGKXG.



Western blot analysis of KAT1 in K562, C6, 3T3, HeLa lysates using KAT1 antibody.



Immunocytochemistry analysis of KAT1 (green) in HeLa using KAT1 antibody and DAPI (blue)



Immunohistochemistry analysis of paraffin-embedded Human tonsil using KAT1/HAT1 antibody. High-pressure and temperature Sodium Citrate pH 6.0 was used for antigen retrieval.