

Anti-EGFR Rabbit mAb

Purified Rabbit Monoclonal Antibody

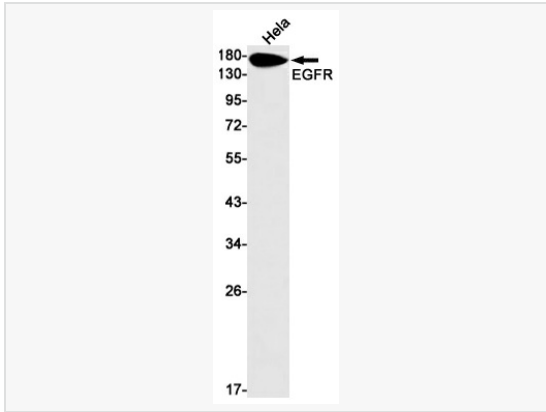
Catalog # R010625

Product Information

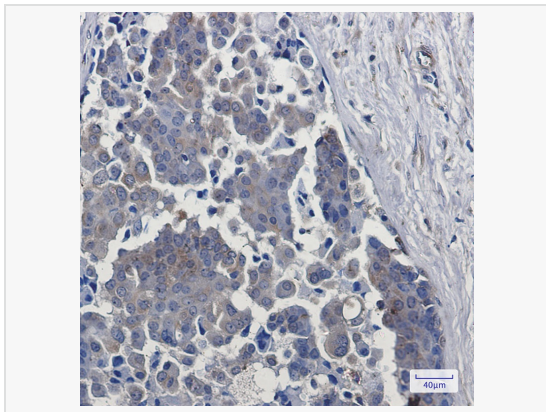
Application	WB, IHC-P/IF (Tissue-P), IP, ELISA
Reactivity	Human
Dilution	WB 1:500~1:1,000; IHC-P 1:50~1:100; IP 1:20
Host	Rabbit
Clonality	Monoclonal
Clone No.	16K61M59
Isotype	IgG
Label	Unconjugated
Immunogen	A synthetic peptide of human EGFR
Format	Buffer System: 50mM Tris-Glycine(pH 7.4), 0.15M NaCl, 40% Glycerol, 0.01% Sodium azide and 0.05% BSA Purification: Affinity Purified.
Storage	Shipped on wet ice. Store at -20°C. Stable for 24 months from date of receipt. Aliquoting is unnecessary for -20°C storage.
Precautions	Anti-EGFR antibody [16K61M59] is for research use only and not for use in diagnostic or therapeutic procedures.

Protein Information

Synonyms	EGFR, ERBB, ERBB1, HER1, Epidermal growth factor receptor, Proto-oncogene c-ErbB-1, Receptor tyrosine-protein kinase erbB-1.
Calculated MW	Calculated MW: 134 kDa; Observed MW: 175 kDa
Uniprot ID	P00533
Gene ID	1956
Background	EGFR is a receptor tyrosine kinase. Receptor for epidermal growth factor (EGF) and related growth factors including TGF-alpha, amphiregulin, betacellulin, heparin-binding EGF-like growth factor, GP30 and vaccinia virus growth factor. Is involved in the control of cell growth and differentiation. . A single-pass transmembrane tyrosine kinase. Ligand binding to this receptor results in receptor dimerization, autophosphorylation (in trans), activation of various downstream signaling molecules and lysosomal degradation.



Western blot analysis of EGFR in HeLa lysates using EGFR antibody.



Immunohistochemistry analysis of paraffin-embedded Human breast cancer using EGFR antibody. High-pressure and temperature Sodium Citrate pH 6.0 was used for antigen retrieval.