

## Anti-Axin 2 Rabbit mAb

Purified Recombinant Rabbit Monoclonal Antibody

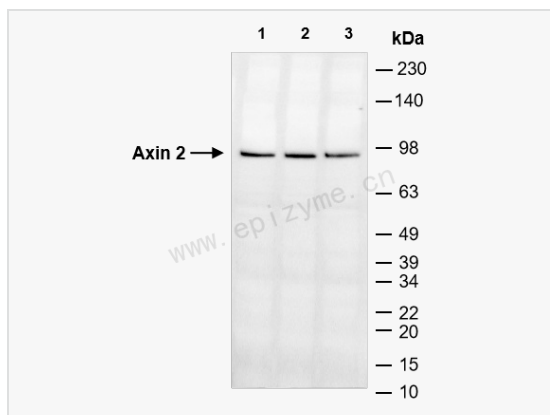
Catalog # R012364

### Product Information

Application	WB, ELISA
Reactivity	Human, Mouse, Rat
Dilution	WB 1:1,000~1:2,000
Host	Rabbit
Clonality	Monoclonal
Clone No.	71L62L64
Isotype	IgG
Label	Unconjugated
Immunogen	A synthesized peptide derived from human Axin 2
Format	Affinity purified monoclonal antibody supplied in PBS with 0.01% sodium azide and 50% glycerol, pH 7.3.
Storage	Shipped on wet ice. Store at -20°C. Stable for 24 months from date of receipt. Aliquoting is unnecessary for -20°C storage.
Precautions	Anti-Axin 2 Rabbit mAb [71L62L64] is for research use only and not for use in diagnostic or therapeutic procedures.

### Protein Information

Synonyms	Axil, Axin like protein, Axin-2, Axin-like protein, Axin2, AXIN2_HUMAN, Axis inhibition protein 2, Conductin, DKFZp781B0869, MGC10366, MGC126582.
Calculated MW	Calculated MW: 94 kDa; Observed MW: 94 kDa
Uniprot ID	Q9Y2T1
Gene ID	8313
Background	The Axin-related protein, Axin2, presumably plays an important role in the regulation of the stability of beta-catenin in the Wnt signaling pathway, like its rodent homologs, mouse conductin/rat axil. In mouse, conductin organizes a multiprotein complex of APC (adenomatous polyposis of the colon), beta-catenin, glycogen synthase kinase 3-beta, and conductin, which leads to the degradation of beta-catenin. Apparently, the deregulation of beta-catenin is an important event in the genesis of a number of malignancies. The AXIN2 gene has been mapped to 17q23-q24, a region that shows frequent loss of heterozygosity in breast cancer, neuroblastoma, and other tumors. Mutations in this gene have been associated with colorectal cancer with defective mismatch repair. [provided by RefSeq, Jul 2008]
Cellular Location	Cytoplasm.
Tissue Location	Expressed in brain and lymphoblast.



Western Blot - Anti-Axin 2 Rabbit mAb [71L62L64]

All lanes: R012364 at 1:1,000 dilution

Lane 1: HeLa (Human cervix adenocarcinoma epithelial cell) whole cell lysates

Lane 2: HepG2 (Human hepatocarcinoma epithelial cell) whole cell lysates

Lane 3: HCT116 (Human colorectal carcinoma epithelial cell) whole cell lysates

Lysates/proteins at 10  $\mu$ g per lane.

Secondary antibody: Goat Anti-Rabbit IgG (H+L), HRP Conjugated (Cat. No. LF102) at 1:5,000 dilution

Predicted band size: 94 kDa

Observed band size: 94 kDa

Developed using the ECL technique (Cat. No. SQ201).