

Anti-Annexin VI Rabbit mAb

Purified Recombinant Rabbit Monoclonal Antibody

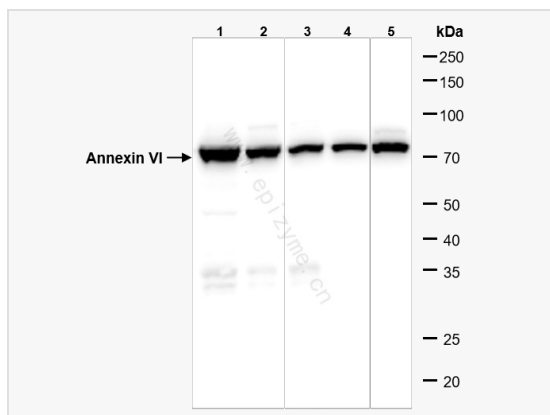
Catalog # R010978

Product Information

| | |
|-------------|---|
| Application | WB, IF (Cell)/ICC, ELISA |
| Reactivity | Human, Mouse, Rat |
| Dilution | WB 1:1,000~1:2,000; IF 1:100~1:200 |
| Host | Rabbit |
| Clonality | Monoclonal |
| Clone No. | 47L41L64 |
| Isotype | IgG |
| Label | Unconjugated |
| Immunogen | Recombinant protein of human Annexin VI |
| Format | Affinity purified monoclonal antibody supplied in PBS with 0.01% sodium azide and 50% glycerol, pH 7.3. |
| Storage | Shipped on wet ice. Store at -20°C. Stable for 24 months from date of receipt. Aliquoting is unnecessary for -20°C storage. |
| Precautions | Anti-Annexin VI Rabbit mAb [47L41L64] is for research use only and not for use in diagnostic or therapeutic procedures. |

Protein Information

| | |
|-------------------|--|
| Synonyms | 67 kDa calelectrin, Annexin A6, Annexin VI, Annexin VI p68, Annexin-6, AnnexinA6, AnnexinVI, ANX 6, ANX A6, ANX6, ANXA 6, ANXA6, ANXA6_HUMAN, Calcium binding protein p68, Calelectrin, Calphobindin II, Calphobindin-II, CalphobindinII, CBP 68, CBP68, Chromobindin 20, Chromobindin-20, Chromobindin20, CPB II, CPB-II, CPBII, Lipocortin VI, LipocortinVI, p68, p70, Protein III, ProteinIII. |
| Calculated MW | Calculated MW: 76 kDa; Observed MW: 72 kDa |
| Uniprot ID | P08133 |
| Gene ID | 309 |
| Background | Annexin VI belongs to a family of calcium-dependent membrane and phospholipid binding proteins. Several members of the annexin family have been implicated in membrane-related events along exocytotic and endocytotic pathways. The annexin VI gene is approximately 60 kbp long and contains 26 exons. It encodes a protein of about 68 kDa that consists of eight 68-amino acid repeats separated by linking sequences of variable lengths. It is highly similar to human annexins I and II sequences, each of which contain four such repeats. Annexin VI has been implicated in mediating the endosome aggregation and vesicle fusion in secreting epithelia during exocytosis. Alternatively spliced transcript variants have been described. [provided by RefSeq, Aug 2010] |
| Cellular Location | Cytoplasm. Melanosome. Identified by mass spectrometry in melanosome fractions from stage I to stage IV. |



Western Blot - Anti-Annexin VI Rabbit mAb [47L41L64]

All lanes: R010978 at 1:1,000 dilution

Lane 1: HeLa (Human cervix adenocarcinoma epithelial cell) whole cell lysates

Lane 2: HCT116 (Human colorectal carcinoma epithelial cell) whole cell lysates

Lane 3: SW620 (Human colorectal carcinoma epithelial cell) whole cell lysates

Lane 4: C2C12 (Mouse myoblasts epithelial cell) whole cell lysates

Lane 5: Balb/c mouse liver whole tissue lysates

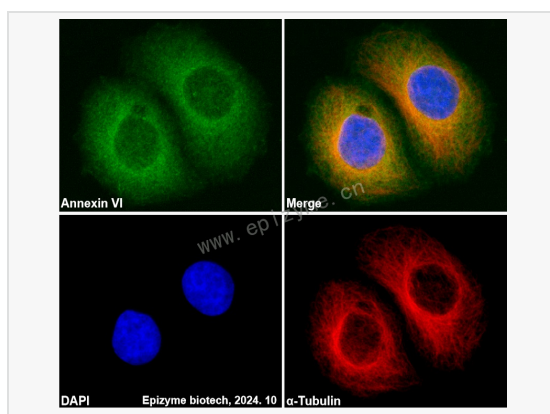
Lysates/proteins at 10 µg per lane.

Secondary antibody: Goat Anti-Rabbit IgG(H+L), HRP Conjugated (Cat. No. LF102) at 1:5,000 dilution

Predicted band size: 76 kDa

Observed band size: 72 kDa

Developed using the ECL technique (Cat. No. SQ201).



Immunofluorescence - Anti-Annexin VI Rabbit mAb [47L41L64]

Sample: HeLa cells

The cells were fixed with 4% paraformaldehyde (10 min), permeabilized with 0.5% Triton X-100 for 10 minutes and then blocked with 5% BSA in 0.1% PBS-Tween for 0.5 hours.

Primary antibodies: R010978 at 1:100 dilution and α -tubulin Mouse Monoclonal Antibody (Cat. No. LF209) at 1:100 dilution

Secondary antibodies: Goat anti-Rabbit (488) at 1:1,000 dilution (shown in green) and Goat anti-Mouse (555) at 1:1,000 dilution (shown in red)

Nuclei were stained with DAPI (shown in blue).