

Anti-Phospho-EGFR (Thr678) Rabbit mAb

Purified Rabbit Monoclonal Antibody

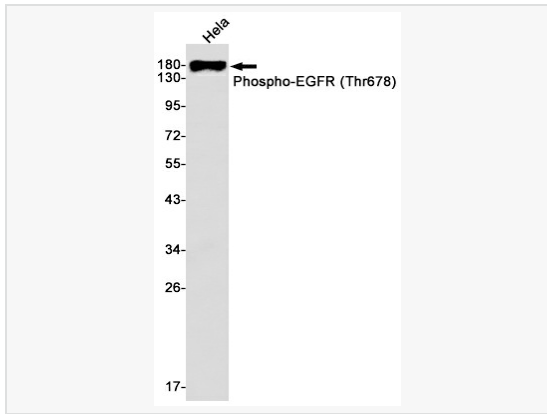
Catalog # R010975

Product Information

Application	WB, ELISA
Reactivity	Human
Dilution	WB 1:500~1:1,000
Host	Rabbit
Clonality	Monoclonal
Clone No.	60L65K18
Isotype	IgG
Label	Unconjugated
Immunogen	A synthetic phosphopeptide corresponding to residues surrounding Thr678 of human EGFR
Format	Buffer System: 50mM Tris-Glycine(pH 7.4), 0.15M NaCl, 40% Glycerol, 0.01% Sodium azide and 0.05% BSA Purification: Affinity Purified.
Storage	Shipped on wet ice. Store at -20°C. Stable for 24 months from date of receipt. Aliquoting is unnecessary for -20°C storage.
Precautions	Anti-Phospho-EGFR (Thr678) antibody [60L65K18] is for research use only and not for use in diagnostic or therapeutic procedures.

Protein Information

Synonyms	EGFR, ERBB, ERBB1, HER1, Epidermal growth factor receptor, Proto-oncogene c-ErbB-1, Receptor tyrosine-protein kinase erbB-1.
Calculated MW	Calculated MW: 134 kDa; Observed MW: 175 kDa
Uniprot ID	P00533
Gene ID	1956
Background	EGFR is a receptor tyrosine kinase. Receptor for epidermal growth factor (EGF) and related growth factors including TGF-alpha, amphiregulin, betacellulin, heparin-binding EGF-like growth factor, GP30 and vaccinia virus growth factor. Is involved in the control of cell growth and differentiation. . A single-pass transmembrane tyrosine kinase. Ligand binding to this receptor results in receptor dimerization, autophosphorylation (in trans), activation of various downstream signaling molecules and lysosomal degradation.



Western blot analysis of Phospho-EGFR (Thr678) in HeLa lysates using Phospho-EGFR (Thr678) antibody.