

Anti-MCM5 Rabbit mAb

Purified Recombinant Rabbit Monoclonal Antibody

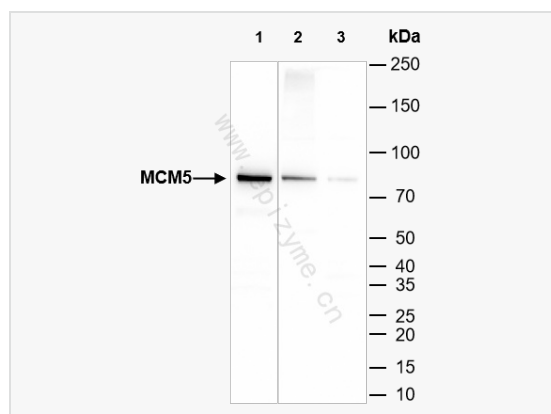
Catalog # R012679

Product Information

Application	WB, IHC-P/IF (Tissue-P), ELISA
Reactivity	Human
Dilution	WB 1:1,000~1:2,000; IHC-P 1:100~1:200; IF 1:100~1:200
Host	Rabbit
Clonality	Monoclonal
Clone No.	35M01L08
Isotype	IgG
Label	Unconjugated
Immunogen	A synthesized peptide derived from human MCM5
Format	Affinity purified monoclonal antibody supplied in PBS with 0.01% sodium azide and 50% glycerol, pH 7.3.
Storage	Shipped on wet ice. Store at -20°C. Stable for 24 months from date of receipt. Aliquoting is unnecessary for -20°C storage.
Precautions	Anti-MCM5 Rabbit mAb [35M01L08] is for research use only and not for use in diagnostic or therapeutic procedures.

Protein Information

Synonyms	CDC 46, CDC46, CDC46 homolog, Cell division cycle 46, DNA replication licensing factor, DNA replication licensing factor MCM 5, DNA replication licensing factor MCM5, MCM 5, MCM5, MCM5_HUMAN, MGC5315, Minichromosome maintenance complex component 5, Minichromosome maintenance deficient (S. cerevisiae) 5, Minichromosome maintenance deficient 5, Minichromosome maintenance deficient protein 5, P1 CDC46, P1-CDC46.
Calculated MW	Calculated MW: 82 kDa; Observed MW: 82 kDa
Uniprot ID	P33992
Gene ID	4174
Background	MCM5 Belongs to the MCM family.
Cellular Location	Nucleus.



Western Blot - Anti-MCM5 Rabbit mAb [35M01L08]

All lanes: R012679 at 1:2,000 dilution

Lane 1: HeLa (Human cervix adenocarcinoma epithelial cell) whole cell lysates

Lane 2: U2OS (Human osteosarcoma epithelial cell) whole cell lysates

Lane 3: T24 (Human bladder cancer epithelial cell) whole cell lysates

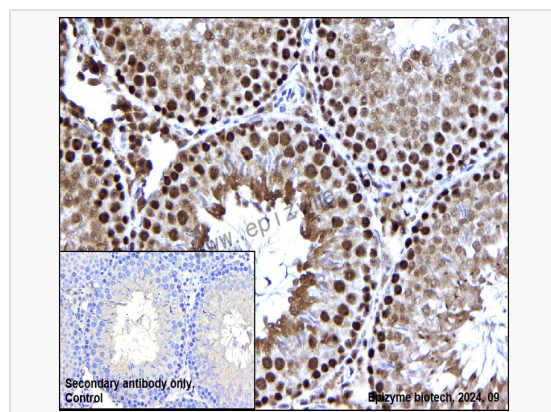
Lysates/proteins at 10 µg per lane.

Secondary antibody: Goat Anti-Rabbit IgG (H+L), HRP Conjugated (Cat. No. LF102) at 1:5,000 dilution

Predicted band size: 82 kDa

Observed band size: 82 kDa

Developed using the ECL technique (Cat. No. SQ201).



Immunohistochemistry - Anti-MCM5 Rabbit mAb [35M01L08]

Sample: Paraformaldehyde-fixed, paraffin embedded rat testis tissue

Heat mediated antigen retrieval with Tris-EDTA buffer (pH 9.0) for 30 mins.

Primary antibody: R012679 at 1:200 dilution

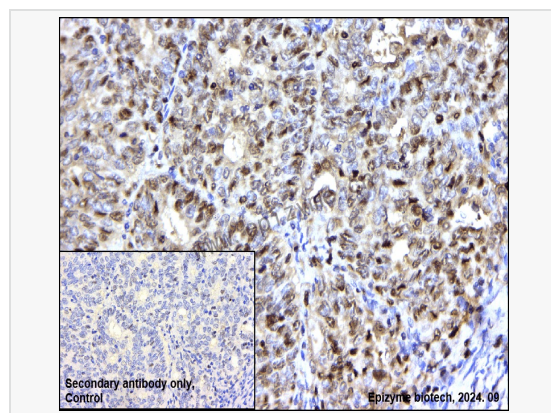
Secondary antibody: Goat Anti-Rabbit IgG (H+L), HRP conjugated at 1:1,000 dilution

DAB was used as the chromogen.

Counter stained with hematoxylin.

Positive/negative staining were presented.

Only the secondary antibody was used as the negative control.



Immunohistochemistry - Anti-MCM5 Rabbit mAb [35M01L08]

Sample: Paraformaldehyde-fixed, paraffin embedded human endometrial carcinoma tissue

Heat mediated antigen retrieval with Tris-EDTA buffer (pH 9.0) for 30 mins.

Primary antibody: R012679 at 1:200 dilution

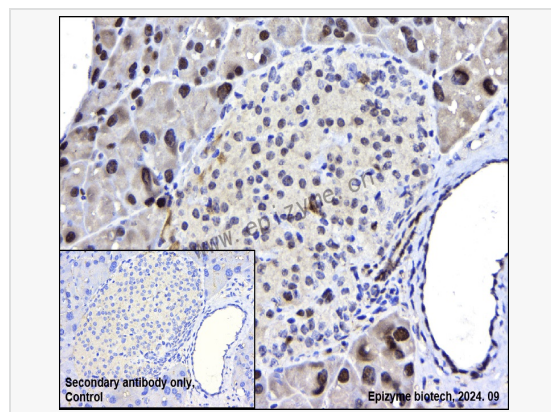
Secondary antibody: Goat Anti-Rabbit IgG (H+L), HRP conjugated at 1:1,000 dilution

DAB was used as the chromogen.

Counter stained with hematoxylin.

Positive/negative staining were presented.

Only the secondary antibody was used as the negative control.



Immunohistochemistry - Anti-MCM5 Rabbit mAb [35M01L08]

Sample: Paraformaldehyde-fixed, paraffin embedded mouse pancreas tissue

Heat mediated antigen retrieval with Tris-EDTA buffer (pH 9.0) for 30 mins.

Primary antibody: R012679 at 1:200 dilution

Secondary antibody: Goat Anti-Rabbit IgG (H+L), HRP conjugated at 1:1,000 dilution

DAB was used as the chromogen.

Counter stained with hematoxylin.

Positive/negative staining were presented.

Only the secondary antibody was used as the negative control.