

## Anti-IL-4 Rabbit mAb

Purified Recombinant Rabbit Monoclonal Antibody

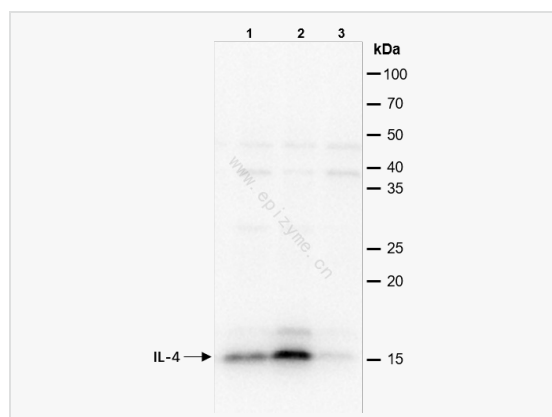
Catalog # R011949

### Product Information

Application	ELISA, WB, IHC-P/IF (Tissue-P), IF (Cell)/ICC
Reactivity	Human, Rat, Mouse
Dilution	WB 1:1,000~1:2,000; IHC-P 1:100~1:200; IF 1:100~1:200
Host	Rabbit
Clonality	Monoclonal
Clone No.	68L68L95
Isotype	IgG
Label	Unconjugated
Immunogen	A synthesized peptide derived from human IL4
Format	Affinity purified monoclonal antibody supplied in PBS with 0.01% sodium azide and 50% glycerol, pH 7.3.
Storage	Shipped on wet ice. Store at -20°C. Stable for 24 months from date of receipt. Aliquoting is unnecessary for -20°C storage.
Precautions	Anti-IL-4 Rabbit mAb [68L68L95] is for research use only and not for use in diagnostic or therapeutic procedures.

### Protein Information

Synonyms	B cell growth factor 1, B cell IgG differentiation factor, B Cell Stimulatory Factor 1, B-cell stimulatory factor 1, BCGF 1, BCGF1, Binetrakin, BSF-1, BSF1, IGG1 induction factor, IL 4, IL-4, IL4, IL4_HUMAN, I4e12, Interleukin 4, Interleukin 4 variant 2, Interleukin 4, isoform 1, Interleukin-4, Lymphocyte stimulatory factor 1, MGC79402, Pitakinra.
Calculated MW	Calculated MW: 17 kDa; Observed MW: 17 kDa
Uniprot ID	P05112
Gene ID	3565
Background	Participates in at least several B-cell activation processes as well as of other cell types. It is a costimulator of DNA-synthesis. It induces the expression of class II MHC molecules on resting B-cells. It enhances both secretion and cell surface expression of IgE and IgG1. It also regulates the expression of the low affinity Fc receptor for IgE (CD23) on both lymphocytes and monocytes.
Cellular Location	Secreted.

**Western Blot - Anti-IL-4 Rabbit mAb [68L68L95]**

All lanes: R011949 at 1:1,000 dilution

Lane 1: Jurkat (human T lymphocytic leukemia cell) whole cell lysates

Lane 2: HCT116 (human colorectal carcinoma epithelial cell) whole cell lysates

Lane 3: T24 (human bladder cancer epithelial cell) whole cell lysates

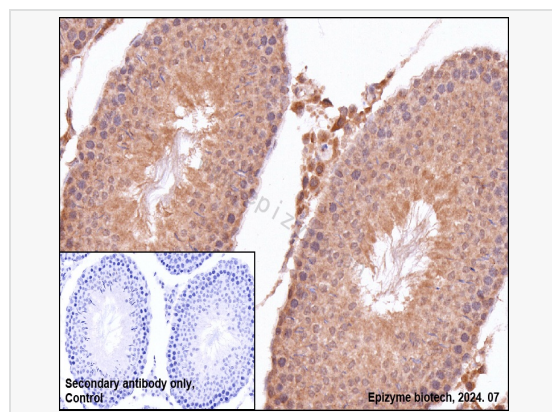
Lysates/proteins at 10 µg per lane.

Secondary antibody: Goat Anti-Rabbit IgG(H+L), HRP Conjugated (Cat. No. LF102) at 1:5,000 dilution

Predicted band size: 17 kDa

Observed band size: 17 kDa

Developed using the ECL technique (Cat. No. SQ201).

**Immunohistochemistry - Anti-IL-4 Rabbit mAb [68L68L95]**

Sample: Paraformaldehyde-fixed, paraffin embedded rat testis tissue

Heat mediated antigen retrieval with Tris-EDTA buffer (pH 9.0) for 30 mins.

Primary antibody: R011949 at 1:200 dilution

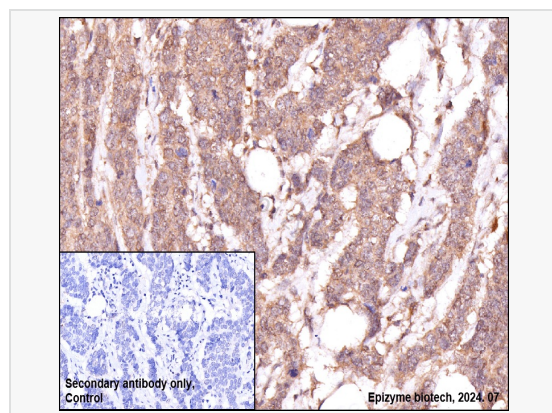
Secondary antibody: Goat Anti-Rabbit IgG (H+L), HRP conjugated at 1:1,000 dilution

DAB was used as the chromogen.

Counter stained with hematoxylin.

Positive/negative staining were presented.

Only the secondary antibody was used as the negative control.

**Immunohistochemistry - Anti-IL-4 Rabbit mAb [68L68L95]**

Sample: Paraformaldehyde-fixed, paraffin embedded human breast carcinoma tissue

Heat mediated antigen retrieval with Tris-EDTA buffer (pH 9.0) for 30 mins.

Primary antibody: R011949 at 1:200 dilution

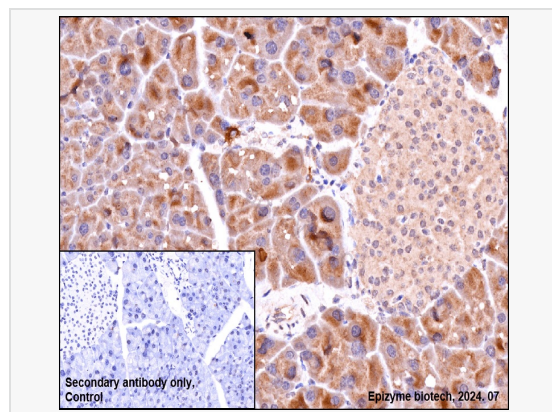
Secondary antibody: Goat Anti-Rabbit IgG (H+L), HRP conjugated at 1:1,000 dilution

DAB was used as the chromogen.

Counter stained with hematoxylin.

Positive/negative staining were presented.

Only the secondary antibody was used as the negative control.

**Immunohistochemistry - Anti-IL-4 Rabbit mAb [68L68L95]**

Sample: Paraformaldehyde-fixed, paraffin embedded mouse pancreas tissue

Heat mediated antigen retrieval with Tris-EDTA buffer (pH 9.0) for 30 mins.

Primary antibody: R011949 at 1:200 dilution

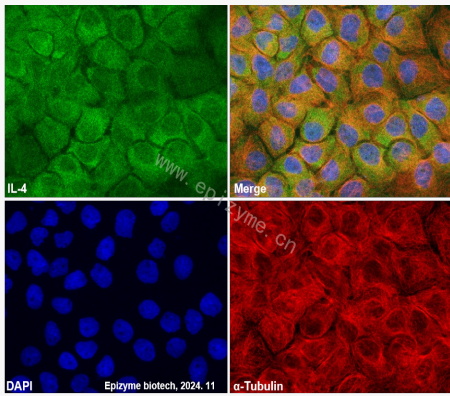
Secondary antibody: Goat Anti-Rabbit IgG (H+L), HRP conjugated at 1:1,000 dilution

DAB was used as the chromogen.

Counter stained with hematoxylin.

Positive/negative staining were presented.

Only the secondary antibody was used as the negative control.



# Immunofluorescence - Anti-IL-4 Rabbit mAb [68L68L95]

Sample: A431 cells

The cells were fixed with 4% paraformaldehyde (10 min), permeabilized with 0.1% Triton X-100 for 5 minutes and then blocked with 5% BSA in 0.1% PBS-Tween for 0.5 hours.

Primary antibodies: R011949 at 1:100 dilution and  $\alpha$ -tubulin Mouse Monoclonal Antibody (Cat. No. LF209) at 1:100 dilution

Secondary antibodies: Goat anti-Rabbit (488) at 1:1,000 dilution (shown in green) and Goat anti-Mouse (555) at 1:1,000 dilution (shown in red)

Nuclei were stained with DAPI (shown in blue).