

Anti-GATA1 Rabbit mAb

Purified Recombinant Rabbit Monoclonal Antibody

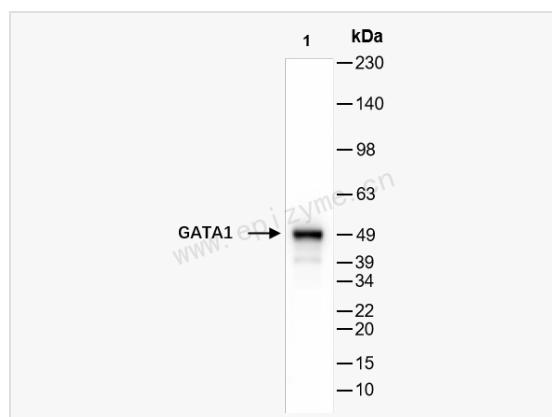
Catalog # R010473

Product Information

| | |
|-------------|---|
| Application | WB, ELISA |
| Reactivity | Human |
| Dilution | WB 1:1,000~1:2,000 |
| Host | Rabbit |
| Clonality | Monoclonal |
| Clone No. | 41M35L70 |
| Isotype | IgG |
| Label | Unconjugated |
| Immunogen | Recombinant protein of human GATA1 |
| Format | Affinity purified monoclonal antibody supplied in PBS with 0.01% sodium azide and 50% glycerol, pH 7.3. |
| Storage | Shipped on wet ice. Store at -20°C. Stable for 24 months from date of receipt. Aliquoting is unnecessary for -20°C storage. |
| Precautions | Anti-GATA1 Rabbit mAb [41M35L70] is for research use only and not for use in diagnostic or therapeutic procedures. |

Protein Information

| | |
|-------------------|--|
| Synonyms | Anemia, X-linked, without thrombocytopenia, included; ERYF 1; Eryf1; Erythroid transcription factor; Erythroid transcription factor 1; GATA 1; GATA binding factor 1; GATA binding protein 1 (globin transcription factor 1); GATA binding protein 1; GATA-1; GATA-binding factor 1; GATA1; GATA1_HUMAN; GF 1; GF-1; GF1; Globin transcription factor 1; NF E1; NF E1 DNA binding protein; NF-E1 DNA-binding protein; NFE 1; NFE1; Nuclear factor erythroid 1; Transcription factor GATA1; XLANP; XLTDA; XLTT. |
| Calculated MW | Calculated MW: 43 kDa; Observed MW: 49 kDa |
| Uniprot ID | P15976 |
| Gene ID | 2623 |
| Background | This gene encodes a protein which belongs to the GATA family of transcription factors. The protein plays an important role in erythroid development by regulating the switch of fetal hemoglobin to adult hemoglobin. Mutations in this gene have been associated with X-linked dyserythropoietic anemia and thrombocytopenia. [provided by RefSeq, Jul 2008] |
| Cellular Location | Nucleus. |
| Tissue Location | Erythrocytes. |



Western Blot - Anti-GATA1 Rabbit mAb [41M35L70]

All lanes: R010473 at 1:2,000 dilution

Lane 1: K562 (Human chronic myeloid leukemia cell) whole cell lysates

Lysates/proteins at 10 μ g per lane.

Secondary antibody: Goat Anti-Rabbit IgG (H+L), HRP Conjugated (Cat. No. LF102) at 1:5,000 dilution

Predicted band size: 43 kDa

Observed band size: 49 kDa

Developed using the ECL technique (Cat. No. SQ201).