

Anti-Midkine Rabbit mAb

Purified Recombinant Rabbit Monoclonal Antibody

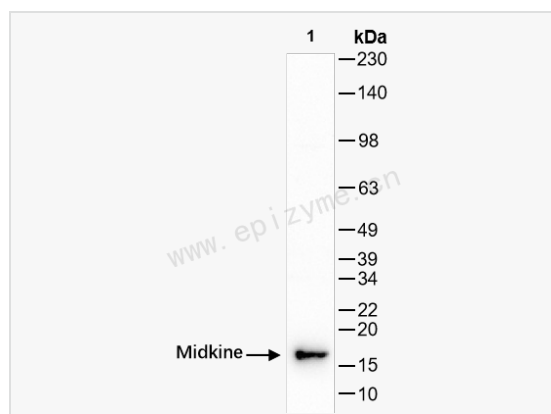
Catalog # R010143

Product Information

Application	WB, IHC-P/IF (Tissue-P), ELISA
Reactivity	Human
Dilution	WB 1:1,000~1:2,000; IHC-P 1:100~1:200; IF 1:100~1:200
Host	Rabbit
Clonality	Monoclonal
Clone No.	77M20M27
Isotype	IgG
Label	Unconjugated
Immunogen	A synthesized peptide derived from human Midkine
Format	Affinity purified monoclonal antibody supplied in PBS with 0.02% sodium azide and 50% glycerol, pH 7.3.
Storage	Shipped on wet ice. Store at -20°C. Stable for 24 months from date of receipt. Aliquoting is unnecessary for -20°C storage.
Precautions	Anti-Midkine Rabbit mAb [77M20M27] is for research use only and not for use in diagnostic or therapeutic procedures.

Protein Information

Synonyms	MDK; FLJ27379; MK1; NEGF2; Midkine; NEGF2; ARAP.
Calculated MW	Calculated MW: 16 kDa; Observed MW: 16 kDa
Uniprot ID	P21741
Gene ID	4192
Background	This gene encodes a member of a small family of secreted growth factors that binds heparin and responds to retinoic acid. The encoded protein promotes cell growth, migration, and angiogenesis, in particular during tumorigenesis. This gene has been targeted as a therapeutic for a variety of different disorders. Alternatively spliced transcript variants encoding multiple isoforms have been observed. [provided by RefSeq, Jul 2012]
Cellular Location	Secreted
Tissue Location	Expressed in various tumor cell lines. In insulinoma tissue predominantly expressed in precancerous lesions.



Western Blot - Anti-Midkine Rabbit mAb [77M20M27]

All lanes: R010143 at 1:1,000 dilution

Lane 1: SH-SY5Y (Human neuroblastoma epithelial cell) whole cell lysates

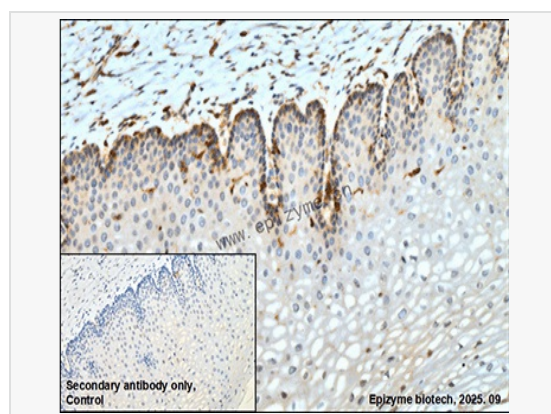
Lysates/proteins at 10 µg per lane.

Secondary antibody: Goat Anti-Rabbit IgG (H+L), HRP Conjugated (Cat. No. LF102) at 1:5,000 dilution

Predicted band size: 16 kDa

Observed band size: 16 kDa

Developed using the ECL technique (Cat. No. SQ201).



Immunohistochemistry - Anti-Midkine Rabbit mAb [77M20M27]

Sample: Paraformaldehyde-fixed, paraffin embedded human cervical cancer tissue

Heat mediated antigen retrieval with Tris-EDTA buffer (pH 9.0) for 30 mins.

Primary antibody: R010143 at 1:200 dilution

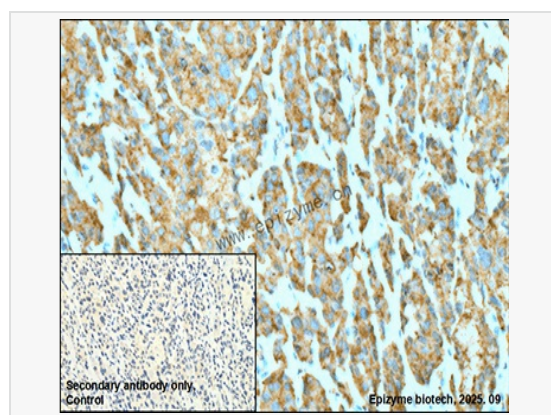
Secondary antibody: Goat Anti-Rabbit IgG (H+L), HRP conjugated at 1:1,000 dilution

DAB was used as the chromogen.

Counter stained with hematoxylin.

Positive/negative staining were presented.

Only the secondary antibody was used as the negative control.



Immunohistochemistry - Anti-Midkine Rabbit mAb [77M20M27]

Sample: Paraformaldehyde-fixed, paraffin embedded human ovarian cancer tissue

Heat mediated antigen retrieval with Tris-EDTA buffer (pH 9.0) for 30 mins.

Primary antibody: R010143 at 1:200 dilution

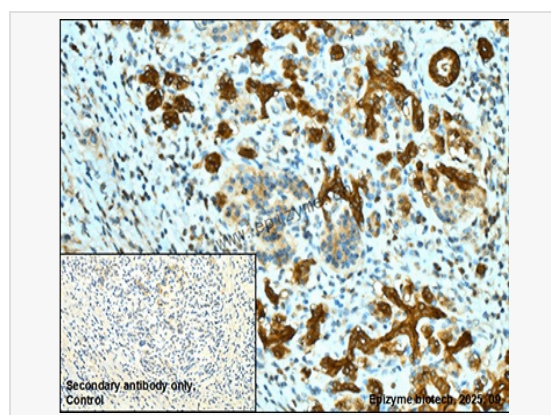
Secondary antibody: Goat Anti-Rabbit IgG (H+L), HRP conjugated at 1:1,000 dilution

DAB was used as the chromogen.

Counter stained with hematoxylin.

Positive/negative staining were presented.

Only the secondary antibody was used as the negative control.



Immunohistochemistry - Anti-Midkine Rabbit mAb [77M20M27]

Sample: Paraformaldehyde-fixed, paraffin embedded human pancreatic cancer tissue

Heat mediated antigen retrieval with Tris-EDTA buffer (pH 9.0) for 30 mins.

Primary antibody: R010143 at 1:200 dilution

Secondary antibody: Goat Anti-Rabbit IgG (H+L), HRP conjugated at 1:1,000 dilution

DAB was used as the chromogen.

Counter stained with hematoxylin.

Positive/negative staining were presented.

Only the secondary antibody was used as the negative control.