

Anti-RNF115 Rabbit mAb

Purified Recombinant Rabbit Monoclonal Antibody

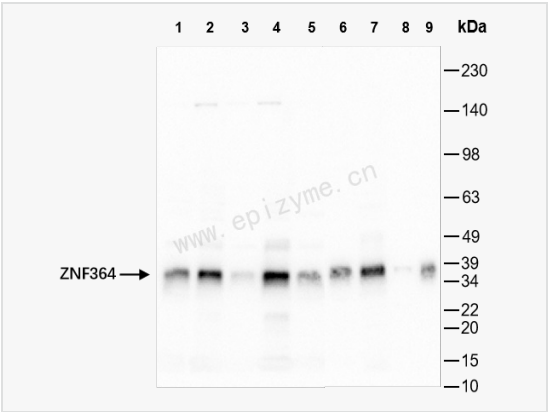
Catalog # R011608

Product Information

Application	WB, ELISA
Reactivity	Human, Mouse, Rat
Dilution	WB 1:1,000~1:2,000
Host	Rabbit
Clonality	Monoclonal
Clone No.	67K83M50
Isotype	IgG
Label	Unconjugated
Immunogen	A synthesized peptide derived from human RNF115
Format	Affinity purified monoclonal antibody supplied in PBS with 0.01% sodium azide and 50% glycerol, pH 7.3.
Storage	Shipped on wet ice. Store at -20°C. Stable for 24 months from date of receipt. Aliquoting is unnecessary for -20°C storage.
Precautions	Anti-RNF115 Rabbit mAb [67K83M50] is for research use only and not for use in diagnostic or therapeutic procedures.

Protein Information

Synonyms	BCA2; Breast cancer associated gene 2; CL469780; E3 ubiquitin-protein ligase RNF115; Rabring 7; RING finger protein 115; RN115_HUMAN; RNF115; Zinc finger protein 364; ZNF364.
Calculated MW	Calculated MW: 34 kDa; Observed MW: 34 kDa
Uniprot ID	Q9Y4L5
Gene ID	27246
Background	E3 ubiquitin-protein ligase that mediates E2-dependent, 'Lys-48'- and/or 'Lys-63'-linked polyubiquitination of substrates and may play a role in diverse biological processes. Through their polyubiquitination, may play a role in the endosomal trafficking and degradation of membrane receptors including EGFR, FLT3, MET and CXCR4.
Cellular Location	Cytoplasm > cytosol. The GTP-bound form of RAB7A recruits RNF115 from the cytosol onto late endosomes/lysosomes.
Tissue Location	Expressed at extremely low levels in normal breast, prostate, lung, colon. Higher levels of expression are detected in heart, skeletal muscle, testis as well as in breast and prostate cancer cells.



Western Blot - Anti-RNF115 Rabbit mAb [67K83M50]
All lanes: R011608 at 1:1,000 dilution
Lane 1: HeLa (Human cervix adenocarcinoma epithelial cell) whole cell lysates
Lane 2: Huh1 (Human hepatocarcinoma epithelial cell) whole cell lysates
Lane 3: HepG2 (Human hepatocarcinoma epithelial cell) whole cell lysates
Lane 4: 293T (Human embryonic kidney cell) whole cell lysates
Lane 5: U87 (Human malignant glioblastoma epithelial cells) whole cell lysates
Lane 6: Mouse brain whole tissue lysates
Lane 7: PC-12 (Rat adrenal pheochromocytoma epithelial cell) whole cell lysates
Lane 8: Rat muscle whole tissue lysates
Lane 9: Rat brain whole tissue lysates
Lysates/proteins at 10 µg per lane.
Secondary antibody: Goat Anti-Rabbit IgG (H+L), HRP Conjugated (Cat. No. LF102) at 1:5,000 dilution
Predicted band size: 34 kDa
Observed band size: 34 kDa
Developed using the ECL technique (Cat. No. SQ201).