

## Anti-E Cadherin Rabbit mAb

Purified Recombinant Rabbit Monoclonal Antibody

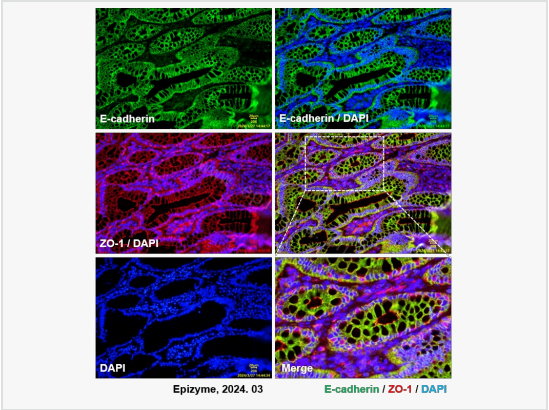
Catalog # R013244

### Product Information

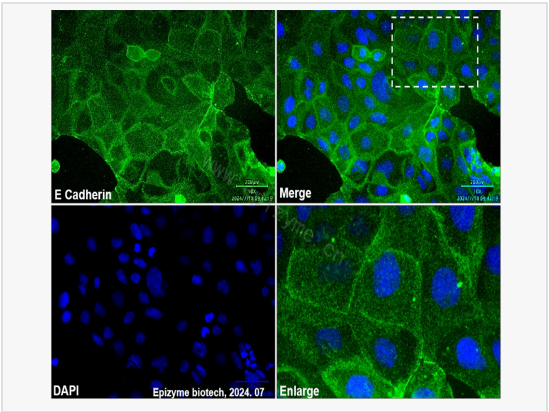
Application	WB, IHC-P, IF (Tissue-P), ELISA, IF (Cell)/ICC
Reactivity	Human
Dilution	WB 1:1,000~1:2,000; IHC-P 1:200; IF 1:50~1:100
Host	Rabbit
Clonality	Monoclonal
Clone No.	10M94M96
Isotype	IgG
Label	Unconjugated
Immunogen	A synthesized peptide derived from human E Cadherin
Format	Affinity purified monoclonal antibody supplied in PBS with 0.01% sodium azide and 50% glycerol, pH 7.3.
Storage	Shipped on wet ice. Store at -20°C. Stable for 24 months from date of receipt. Aliquoting is unnecessary for -20°C storage.
Precautions	Anti-E Cadherin Rabbit mAb [10M94M96] is for research use only and not for use in diagnostic or therapeutic procedures.

### Protein Information

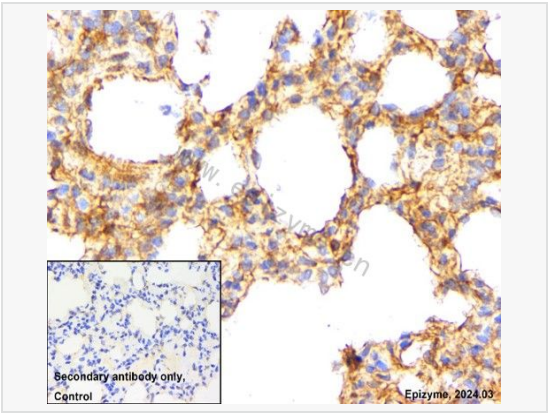
Synonyms	CDH1, CDHE, UVO, Cadherin-1, CAM 120/80, Epithelial cadherin, E-cadherin, Uvomorulin, CD antigen CD324, ECAD, LCAM, Arc-1, BCDS1.
Calculated MW	Calculated MW: 97 kDa; Observed MW: 120-140 kDa
Uniprot ID	P12830
Gene ID	999
Background	CDH1 a single-pass type I membrane protein, and calcium dependent cell adhesion proteins. It is a ligand for integrin alpha-E/beta-7, and it colocalizes with DLG7 at sites of cell-cell contact in intestinal epithelial cells.



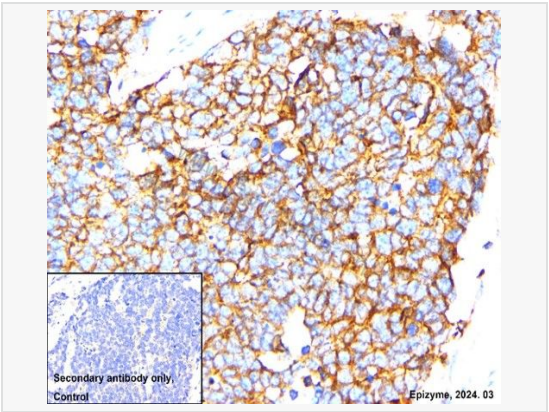
Immunofluorescence - Anti-E Cadherin Rabbit mAb [10M94M96]  
Sample: Paraformaldehyde-fixed, paraffin embedded human colorectal carcinoma tissue  
The section was pre-treated using heat mediated antigen retrieval with Tris-EDTA buffer (pH 9.0) for 30 mins.  
Primary antibody: R013244 at 1:100 dilution and Anti-ZO-1 Mouse mAb [24D02C18] (Cat. No. M900002) at 1:100 dilution  
Secondary antibody: Goat anti-Rabbit (488) at 1:1,000 dilution (shown in green) and Goat anti-Mouse (CY3) at 1:1,000 dilution (shown in red)  
Nuclei were stained with DAPI (shown in blue).



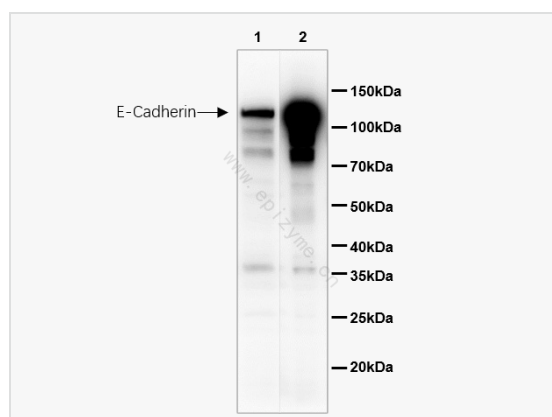
Immunofluorescence - Anti-E Cadherin Rabbit mAb [10M94M96]  
Sample: A431 cells  
The cells were fixed with 4% paraformaldehyde (10 min), permeabilized with 0.1% Triton X-100 for 5 minutes and then blocked with 5% BSA in 0.1% PBS-Tween for 0.5 hours.  
Primary antibodies: R013244 at 1:50 dilution  
Secondary antibodies: Goat anti-Rabbit (488) at 1:1,000 dilution (shown in green)  
Nuclei were stained with DAPI (shown in blue).



Immunohistochemistry - Anti-E Cadherin Rabbit mAb [10M94M96]  
Sample: Paraformaldehyde-fixed, paraffin embedded human lung cancer tissue  
Heat mediated antigen retrieval with Tris-EDTA buffer (pH 9.0) for 30 mins.  
Primary antibody: R013244 at 1:200 dilution  
Secondary antibody: Goat Anti-Rabbit IgG (H+L), HRP conjugated at 1:1,000 dilution  
DAB was used as the chromogen.  
Counter stained with hematoxylin.  
Positive/negative staining were presented.  
Only the secondary antibody was used as the negative control.



Immunohistochemistry - Anti-E Cadherin Rabbit mAb [10M94M96]  
Sample: Paraformaldehyde-fixed, paraffin embedded human cervical cancer tissue  
Heat mediated antigen retrieval with Tris-EDTA buffer (pH 9.0) for 30 mins.  
Primary antibody: R013244 at 1:200 dilution  
Secondary antibody: Goat Anti-Rabbit IgG (H+L), HRP conjugated at 1:1,000 dilution  
DAB was used as the chromogen.  
Counter stained with hematoxylin.  
Positive/negative staining were presented.  
Only the secondary antibody was used as the negative control.



#### Western Blot - Anti-E Cadherin Rabbit mAb [10M94M96]

All lanes: R013244 at 1:1,000 dilution

Lane 1: MCF7 (human breast adenocarcinoma epithelial cell) whole cell lysates

Lane 2: MSC (human mesenchymal stem cell) whole cell lysates

Lysates/proteins at 10 µg per lane.

Secondary antibody: Goat Anti-Rabbit IgG(H+L), HRP Conjugated (Cat. No. LF102) at 1:5,000 dilution

Predicted band size: 97 kDa

Observed band size: 120-140 kDa

Developed using the ECL technique (Cat. No. SQ201).