

Anti-Phospho-CAD (Thr456) Rabbit pAb

Purified Rabbit Polyclonal Antibody

Catalog # P011942

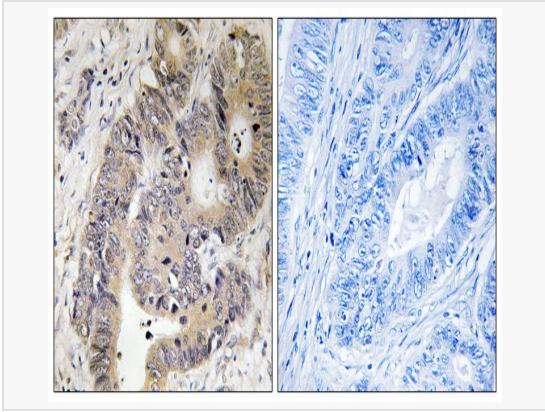
Product Information

Application	IHC-P/IF (Tissue-P), ELISA
Reactivity	Human
Dilution	IHC-P 1:50~1:100
Host	Rabbit
Clonality	Polyclonal
Isotype	IgG
Label	Unconjugated
Immunogen	Synthetic peptide of human CAD
Format	Buffer System: Liquid in PBS containing 50% glycerol, 0.5% BSA and 0.02% sodium azide, pH 7.3. Purification: Affinity Purified.
Storage	Shipped on wet ice. Store at -20°C. Stable for 24 months from date of receipt. Aliquoting is unnecessary for -20°C storage.
Precautions	Anti-Phospho-CAD (Thr456) antibody is for research use only and not for use in diagnostic or therapeutic procedures.

Protein Information

Synonyms	CAD, CAD protein.
Uniprot ID	P27708
Gene ID	790
Background	Carbamoyl phosphate synthetase-aspartate carbamoyltransferase-dihydroorotase (CAD) is a multifunctional protein that initiates and regulates mammalian de novo pyrimidine biosynthesis.

Validation Images



Immunohistochemistry analysis of paraffin-embedded Human colon carcinoma tissue using Phospho-CAD (Thr456) antibody. High-pressure and temperature Sodium Citrate pH 6.0 was used for antigen retrieval. Sample with blocking peptide on the right.