

Anti-TGF beta 1 Mouse mAb

Purified Mouse Monoclonal Antibody

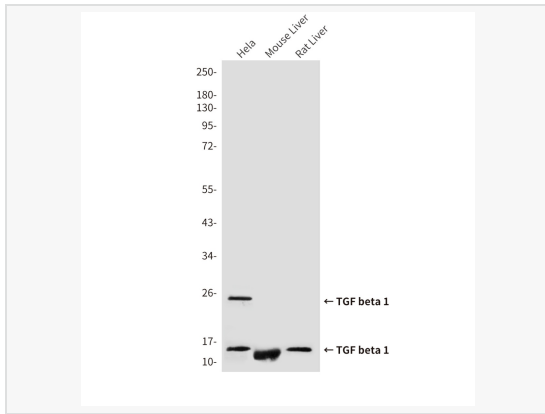
Catalog # M013527

Product Information

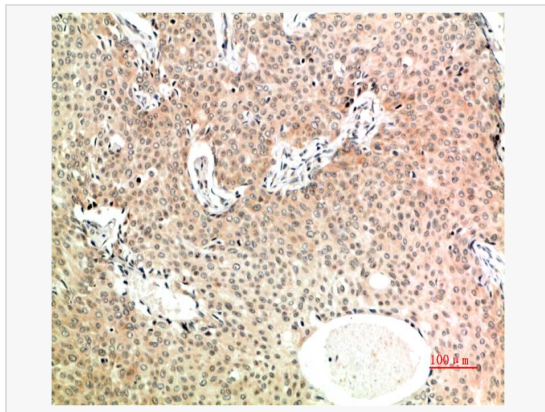
Application	WB, IHC-P/IF (Tissue-P), ELISA
Reactivity	Human, Rat, Mouse (Cell)
Dilution	WB 1:500~1:1,000; IHC-P 1:50~1:100
Host	Mouse
Clonality	Monoclonal
Clone No.	91K06L25
Isotype	IgG1
Label	Unconjugated
Immunogen	Synthetic peptide conjugated to KLH.
Format	Buffer System: Liquid in PBS containing 50% glycerol, 0.5% BSA and 0.02% sodium azide, pH 7.3. Purification: Affinity Purified.
Storage	Shipped on wet ice. Store at -20°C. Stable for 24 months from date of receipt. Aliquoting is unnecessary for -20°C storage.
Precautions	Anti-TGF beta 1 antibody [91K06L25] is for research use only and not for use in diagnostic or therapeutic procedures.

Protein Information

Synonyms	TGF beta 1, TGFB, CED, LAP.
Calculated MW	Calculated MW: 44 kDa; Observed MW: 12,25,45-65 kDa
Uniprot ID	P01137
Gene ID	7040
Background	Multifunctional protein that controls proliferation, differentiation and other functions in many cell types. Many cells synthesize TGFBI and have specific receptors for it. It positively and negatively regulates many other growth factors. It plays an important role in bone remodeling as it is a potent stimulator of osteoblastic bone formation, causing chemotaxis, proliferation and differentiation in committed osteoblasts.



Western blot analysis of TGF beta 1 in HeLa lysates, mouse Liver lysates, rat Liver lysates using TGF beta 1 antibody [91K06L25].



Immunohistochemistry analysis of paraffin-embedded Human Breast Carcinoma Tissue using TGF beta 1 antibody [91K06L25]. High-pressure and temperature Sodium Citrate pH 6.0 was used for antigen retrieval.



Immunohistochemistry analysis of paraffin-embedded Human Placental Tissue using TGF beta 1 antibody [91K06L25]. High-pressure and temperature Sodium Citrate pH 6.0 was used for antigen retrieval.