

Anti-Hsp90 beta Mouse mAb

Purified Recombinant Mouse Monoclonal Antibody

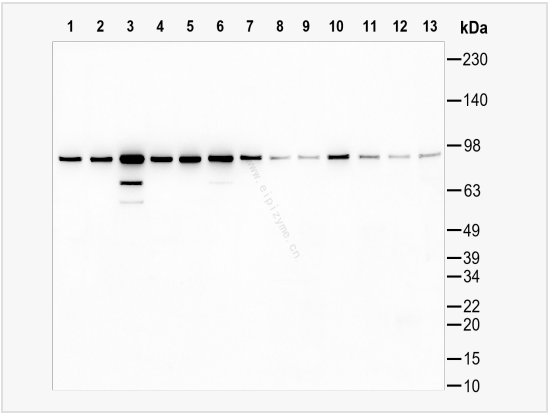
Catalog # M011178

Product Information

Application	WB, ELISA
Reactivity	Human, Mouse, Rat
Dilution	WB 1:1,000~1:2,000
Host	Mouse
Clonality	Monoclonal
Clone No.	27L89M24
Isotype	IgG
Label	Unconjugated
Immunogen	Recombinant protein of human Hsp90 beta
Format	Affinity purified monoclonal antibody supplied in PBS with 0.02% sodium azide and 50% glycerol, pH 7.3.
Storage	Shipped on wet ice. Store at -20°C. Stable for 24 months from date of receipt. Aliquoting is unnecessary for -20°C storage.
Precautions	Anti-Hsp90 beta Mouse mAb [27L89M24] is for research use only and not for use in diagnostic or therapeutic procedures.

Protein Information

Synonyms	D6S182; HSP84; HSP90B; HSPC2; HSPCB; 90kDa; Hsp84-1; Hsp90; HSP90-BETA; HS90B_HUMAN; HSP90AB1; HSP 90; Heat shock 84 kDa (HSP 84 HSP84); Heat shock protein family C member 3; HSPC3; HS90B_MOUSE; Tumor-specific transplantation 84 kDa antigen (TSTA); HS90B_RAT.
Calculated MW	Calculated MW: 83 kDa; Observed MW: 90 kDa
Uniprot ID	P08238
Gene ID	3326
Background	This gene encodes a member of the heat shock protein 90 family; these proteins are involved in signal transduction, protein folding and degradation and morphological evolution. This gene encodes the constitutive form of the cytosolic 90 kDa heat-shock protein and is thought to play a role in gastric apoptosis and inflammation. Alternative splicing results in multiple transcript variants. Pseudogenes have been identified on multiple chromosomes. [provided by RefSeq, Dec 2012]
Cellular Location	Cytoplasm Melanosome Nucleus Secreted Cell membrane Dynein axonemal particle Cell surface Identified by mass spectrometry in melanosome fractions from stage I to stage IV (PubMed:17081065). Translocates with BIRC2 from the nucleus to the cytoplasm during differentiation (PubMed:18239673). Secreted when associated with TGFBI processed form (LAP) (PubMed:20599762).



Western Blot - Anti-Hsp90 beta Mouse mAb [27L89M24]
All lanes: M011178 at 1:1,000 dilution
Lane 1: HeLa (Human cervix adenocarcinoma epithelial cell) whole cell lysates
Lane 2: HepG2 (Human hepatocarcinoma epithelial cell) whole cell lysates
Lane 3: HCT116 (Human colorectal carcinoma epithelial cell) whole cell lysates
Lane 4: MCF-7 (human breast adenocarcinoma epithelial cell) whole cell lysates
Lane 5: 293T (Human embryonic kidney cell) whole cell lysates
Lane 6: U87 (Human malignant glioblastoma epithelial cells) whole cell lysates
Lane 7: C2C12 (Mouse myoblasts epithelial cell) whole cell lysates
Lane 8: Mouse brain whole tissue lysates
Lane 9: Mouse liver whole tissue lysates
Lane 10: PC-12 (Rat adrenal pheochromocytoma epithelial cell) whole cell lysates
Lane 11: Rat brain whole tissue lysates
Lane 12: Rat heart whole tissue lysates
Lane 13: Rat liver whole tissue lysates
Lysates/proteins at 10 µg per lane.
Secondary antibody: Goat Anti-Mouse IgG(H+L), HRP Conjugated (Cat. No. LF101) at 1:5,000 dilution
Predicted band size: 83 kDa
Observed band size: 90 kDa
Developed using the ECL technique (Cat. No. SQ201).